



# Semi-Detached House in Cancelada

Price € 600,000

Bedrooms	4
Bathrooms	3.5
Build Size	219 m²
Terrace	50 m²
Plot Size	279 m²

## SETTING

- ✓ Commercial Area
- ✓ Village
- ✓ Close To Golf
- ✓ Close To Shops
- ✓ Close To Sea
- ✓ Close To Town
- ✓ Close To Schools

## ORIENTATION

- ✓ East
- ✓ South East

## CONDITION

- ✓ Excellent

## VIEWS

- ✓ Mountain
- ✓ Panoramic
- ✓ Garden
- ✓ Urban
- ✓ Street

## FEATURES

- ✓ Fitted Wardrobes
- ✓ Near Transport
- ✓ Private Terrace
- ✓ Solarium
- ✓ WiFi
- ✓ Games Room
- ✓ Storage Room
- ✓ Utility Room
- ✓ Ensuite Bathroom
- ✓ Barbeque
- ✓ Double Glazing
- ✓ Near Mosque
- ✓ Near Church
- ✓ Fiber Optic

## FURNITURE

- ✓ Not Furnished

## KITCHEN

- ✓ Fully Fitted

## PARKING

- ✓ Open

## UTILITIES

- ✓ Electricity
- ✓ Drinkable Water
- ✓ Telephone

## CATEGORY

- ✓ Bargain
- ✓ Investment
- ✓ Reduced

---

Canceleda (Estepona) 10 minutes from Puerto Banus, Marbella

Large semi-detached house with 4 bedrooms, with a solarium with sun all day, large kitchen, very bright and spacious dining room.

Distributed over 4 levels: 70 m2 basement, with bathroom and can be used as a fourth or guest bedroom, office or games room. Street level is the living room, kitchen and toilet. Upper level is 3 bedrooms and 2 bathrooms

On the upper level is the solarium with jacuzzi, to enjoy barbecues, sunbathe and panoramic mountain and urban views.

Excellent location, walking distance to all services, shops, pharmacies, school, restaurants, etc. Located in Canceleda town. Walking to Costalita beach is a 10-minute walk. By car 10 minutes from Puerto Banús and in the other direction 10 minutes from Estepona

It is a semi-detached house, no pool and street parking. Panoramic and urban views.

[View Property Online](#)



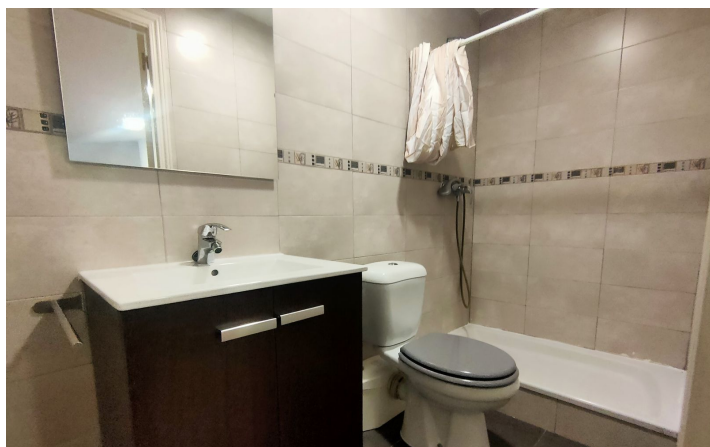
GALLERY











---

ViVi Real Estate | Calle Almendralejo de Jarales 5 Mijas Costa, 29640  
Tel: +34 672 816 975  
Email: [sales@vivi-realestate.com](mailto:sales@vivi-realestate.com) | Web: [www.vivi-realestate.com](http://www.vivi-realestate.com)