

Penthouse in Estepona

Price € 649,000

Bedrooms	3
Bathrooms	2
Build Size	135 m²
Terrace	30 m²
Plot Size	165 m²

ORIENTATION

✓ South

CONDITION

✓ Excellent

POOL

✓ Communal

CLIMATE CONTROL

✓ Air Conditioning

VIEWS

✓ Sea

✓ Mountain

✓ Golf

✓ Panoramic

FEATURES

✓ Lift

✓ WiFi

✓ Gym

✓ Storage Room

✓ Utility Room

✓ Fiber Optic

FURNITURE

✓ Fully Furnished

KITCHEN

✓ Fully Fitted

GARDEN

✓ Communal

SECURITY

✓ Gated Complex

PARKING

✓ Underground

UTILITIES

✓ Electricity

CATEGORY

✓ Golf

✓ Investment

✓ Luxury

✓ Contemporary

Penthouse with Panoramic Sea & Golf Views – Estepona

Discover this spectacular south-facing penthouse in an exclusive frontline golf development in Estepona, offering abundant natural light and stunning panoramic views of the sea and golf course. Ideally located just 5 minutes from Alcazaba Lagoon and close to Estepona's new hospital, schools, restaurants, and supermarkets, this property combines luxury and convenience.

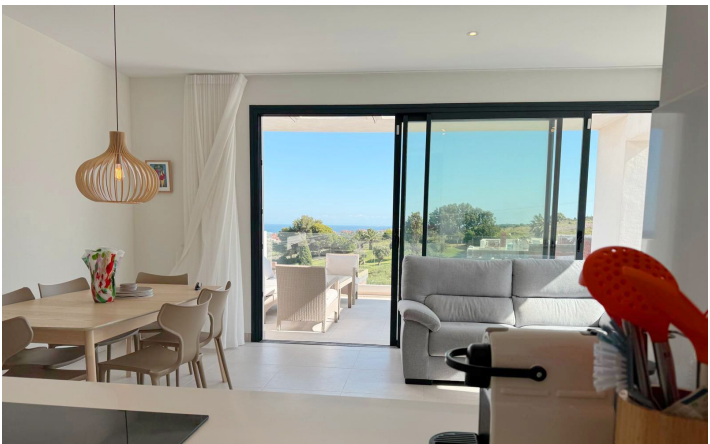
The spacious interior features a bright open-plan living and dining area, a modern fully equipped kitchen, and direct access to a large private terrace—perfect for enjoying the peaceful surroundings and breathtaking views. The master bedroom includes en-suite bathroom with walk-in shower. Two additional generous bedrooms with built-in wardrobes, a stylish bathroom with double sinks and walk-in shower, and a laundry area complete the layout.

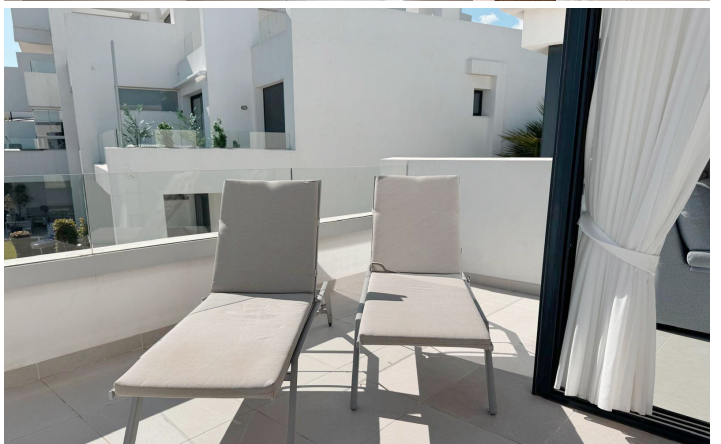
Additional features include a private underground parking space and a storage room. The well-maintained development offers excellent amenities such as a large swimming pool with sea and mountain views, a fully equipped gym, and 24-hour security.

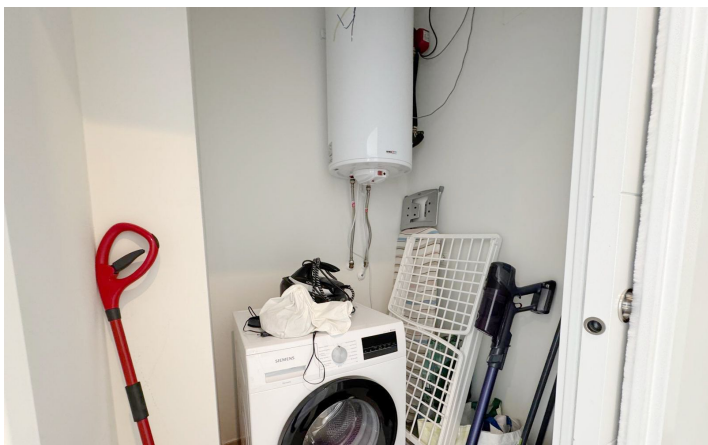
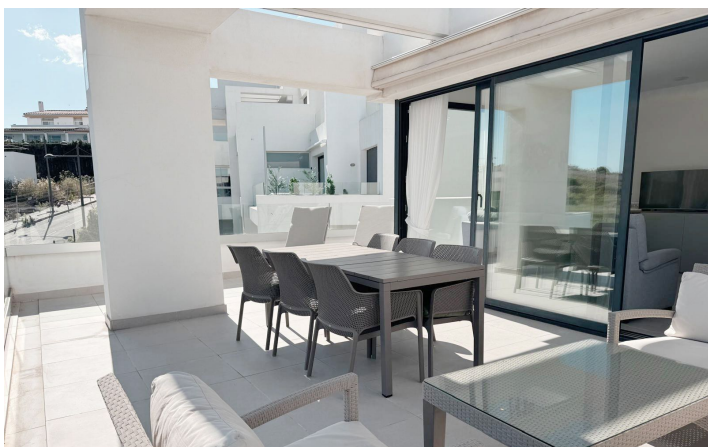
This property is ideal for luxurious living or as a high-yield rental investment on the Costa del Sol.

[View Property Online](#)

GALLERY







Vivi Real Estate | Calle Almendralejo de Jarales 5 Mijas Costa, 29640
Tel: +34 672 816 975
Email: sales@vivi-realestate.com | Web: www.vivi-realestate.com