

Middle Floor Apartment in Aloha

Price € 560,000

Bedrooms	2
Bathrooms	2.5
Build Size	122 m²
Terrace	50 m²
Plot Size	172 m²

SETTING

- ✓

Close To Golf
- ✓

Close To Port
- ✓

Close To Shops
- ✓

Close To Schools

ORIENTATION

- ✓

South West

CONDITION

- ✓

New Construction

POOL

- ✓

Communal

CLIMATE CONTROL

- ✓

Air Conditioning

VIEWS

- ✓

Garden

FEATURES

- ✓

Lift
- ✓

Fitted Wardrobes
- ✓

Gym
- ✓

Utility Room
- ✓

Ensuite Bathroom
- ✓

Marble Flooring

FURNITURE

- ✓

Fully Furnished

GARDEN

- ✓

Communal

SECURITY

- ✓

Gated Complex
- ✓

Entry Phone
- ✓

24 Hour Security

PARKING

- ✓

Communal

In fully refurbished urbanization, in one of the best areas of Nueva Andalucia, Marbella, with spectacular views, very close to the best golf courses.

With two bedrooms, two bathrooms. Living dining room with separate kitchen, fully equipped with Siemens appliances, both with exit to the large terrace. One bedroom with bathroom en suite and private terrace.

The property has air conditioning hot and cold, marble floors and top qualities.

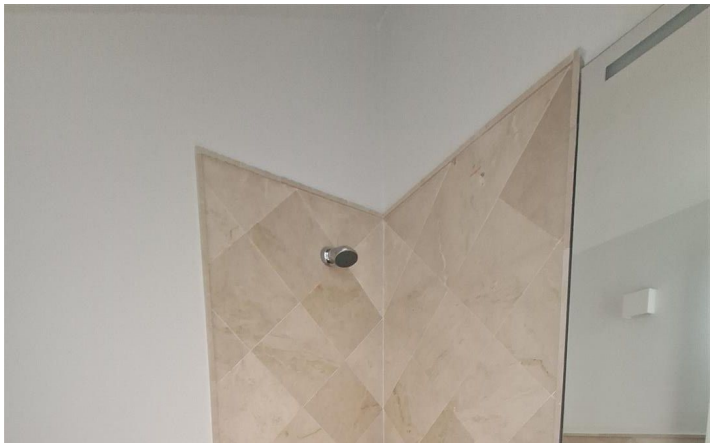
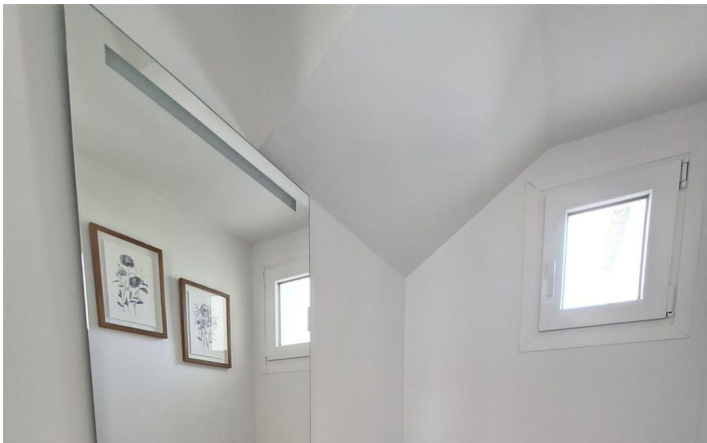
A subway parking space and a storage room.

The urbanization offers two swimming pools, large green areas and gym. Security 24 hours. Just two minutes from Los Naranjos Golf, Las Brisas Golf and Aloha Golf. With all the services and leisure areas of Nueva Andalucia and 5 minutes from Puerto Banus.

[View Property Online](#)

GALLERY







Vivi Real Estate | Calle Almendralejo de Jarales 5 Mijas Costa, 29640
Tel: +34 672 816 975
Email: sales@vivi-realestate.com | Web: www.vivi-realestate.com