

Penthouse in Benahavís

Price € 680,000

Bedrooms	2
Bathrooms	2
Build Size	118 m²
Terrace	45 m²
Plot Size	163 m²

SETTING

- ✓ Village
- ✓ Close To Golf
- ✓ Close To Shops
- ✓ Close To Town
- ✓ Close To Schools

ORIENTATION

- ✓ South
- ✓ West

CONDITION

- ✓ Excellent

POOL

- ✓ Communal
- ✓ Heated
- ✓ Children`s Pool

CLIMATE CONTROL

- ✓ Air Conditioning
- ✓ Hot A/C
- ✓ Cold A/C
- ✓ Central Heating
- ✓ U/F Heating

VIEWS

- ✓ Sea
- ✓ Mountain
- ✓ Country
- ✓ Panoramic
- ✓ Garden
- ✓ Pool

FEATURES

- ✓ Lift
- ✓ Fitted Wardrobes
- ✓ Near Transport
- ✓ Private Terrace
- ✓ Satellite TV
- ✓ Gym
- ✓ Ensuite Bathroom
- ✓ Marble Flooring
- ✓ Barbeque
- ✓ Double Glazing
- ✓ 24 Hour Reception
- ✓ Basement
- ✓ Fiber Optic

FURNITURE

- ✓ Optional

KITCHEN

- ✓ Fully Fitted

GARDEN

- ✓ Communal

SECURITY

- ✓ Gated Complex
- ✓ Entry Phone
- ✓ 24 Hour Security
- ✓ Safe

PARKING

- ✓ Underground
- ✓ Garage

UTILITIES

- ✓ Electricity
- ✓ Drinkable Water
- ✓ Telephone

CATEGORY

- ✓ Resale

Exclusive Penthouse with Panoramic Views in Benahavís

Experience luxury living at its finest in this modern penthouse located in a quiet and privileged residential area in Benahavís. This property combines elegant features, a fantastic south/west orientation, and breathtaking panoramic views stretching to Gibraltar and North Africa.

Property Overview:

Living Area: 119 m²

Terraces: 2 terraces with a total of 45 m²

Orientation: South/West (optimal sunlight all day long)

Highlights & Features:

Modern Comfort: AC (hot/cold), underfloor heating with smart controls.

Open-Plan Living: High-quality, brand-new fitted kitchen with Siemens appliances.

Master Bedroom with en-suite bathroom, walk-in shower and direct terrace access and sea view.

2nd bedroom with its own bathroom. Plus safe.

Terrace Living: Automatic awning for perfect relaxation and entertaining. BBQ Gas.

4 pools, one is a heated infinity pool.

Gym and social club ready end of 2025.

Security: 24-hour security service, concierge, and CCTV for absolute safety and convenience.

Ideal Location:

Tranquility: The complex is situated in a peaceful area of Benahavís.

Excellent connectivity: Just 5 minutes to Mercadona supermarket and approximately 15 minutes by car to the beaches and the glamorous marina of Puerto Banús.

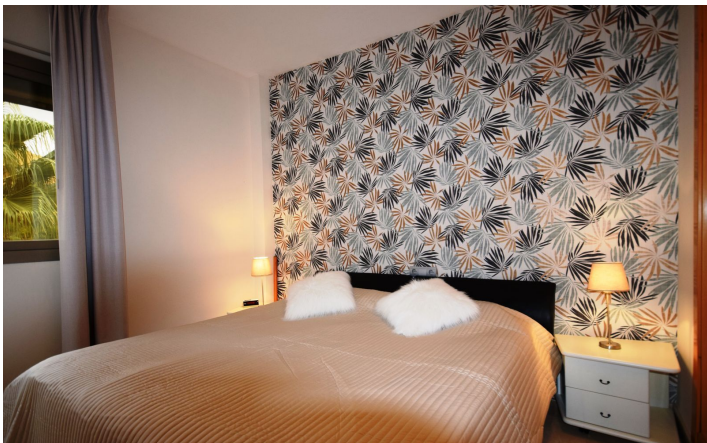
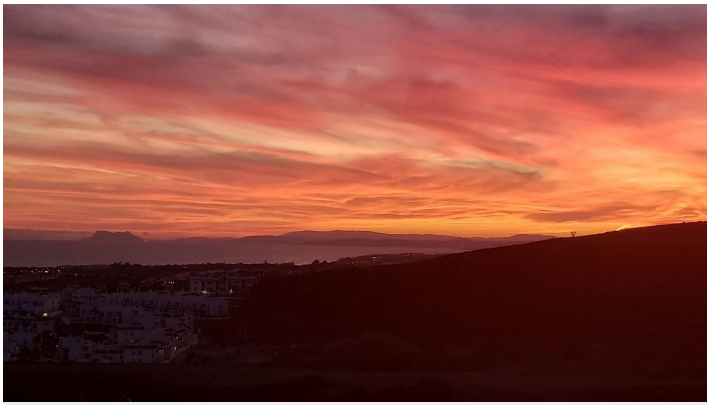
The Special Feature:

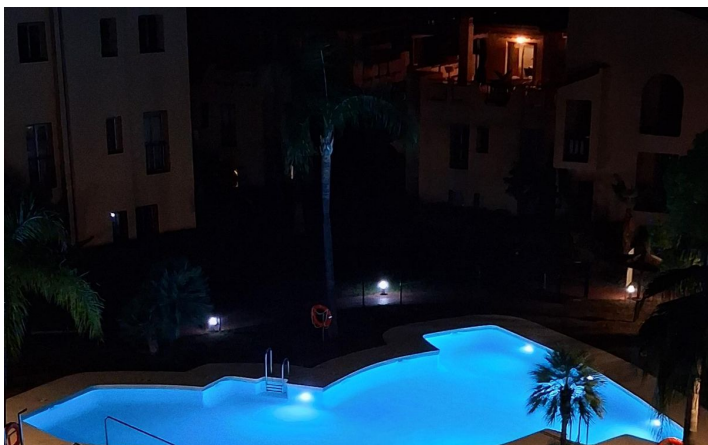
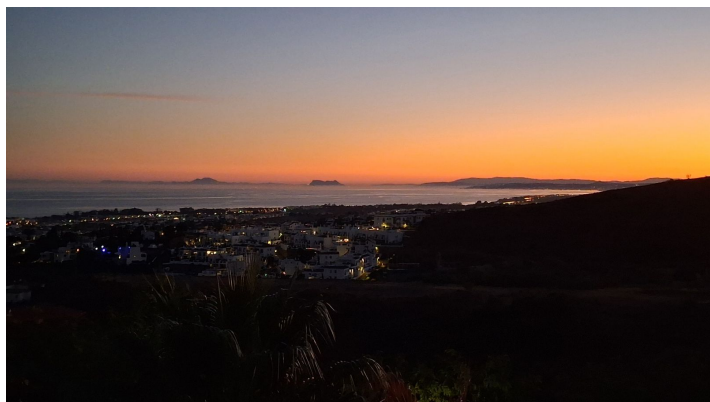
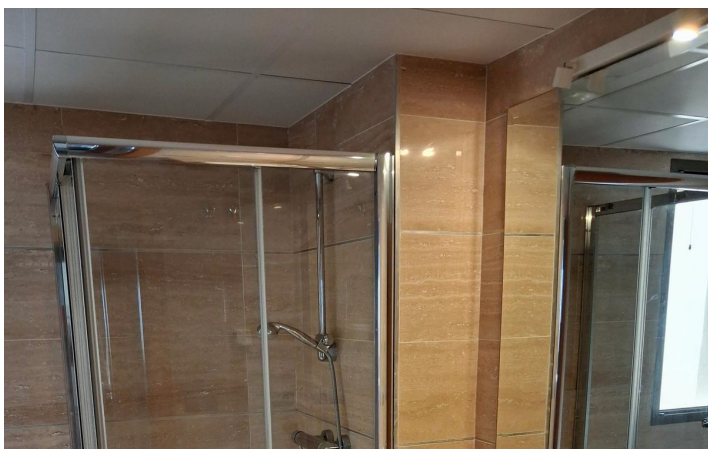
The unobstructed, panoramic views over the Mediterranean Sea, Gibraltar, and on clear days as far as North Africa are absolutely spectacular and make this penthouse truly unique.

[View Property Online](#)

GALLERY







Vivi Real Estate | Calle Almendralejo de Jarales 5 Mijas Costa, 29640

Tel: +34 672 816 975

Email: sales@vivi-realestate.com | Web: www.vivi-realestate.com