



# Penthouse in Benalmadena Costa

Price **€ 770,000**

Bedrooms	2
Bathrooms	2
Build Size	81 m <sup>2</sup>
Terrace	80 m <sup>2</sup>
Plot Size	255 m <sup>2</sup>

## SETTING

- ✓ Close To Port
- ✓ Close To Sea

## ORIENTATION

- ✓ North East

## CONDITION

- ✓ New Construction

## POOL

- ✓ Communal

## VIEWS

- ✓ Sea
- ✓ Mountain
- ✓ Panoramic
- ✓ Pool

## FEATURES

- ✓ Lift
- ✓ Private Terrace

## FURNITURE

- ✓ Not Furnished

## PARKING

- ✓ Underground

## UTILITIES

- ✓ Electricity
- ✓ Drinkable Water
- ✓ Telephone
- ✓ Gas

Exclusive Penthouse with Sea Views for Sale in Benalmádena Costa

This penthouse is located in a modern newly built building, next to Parque de la Paloma and just a few meters from the beach.

Upon entering, you are welcomed by a bright living-dining room with a fully equipped modern open-plan kitchen.

Thanks to its large floor-to-ceiling windows, the apartment is filled with natural light. One of its main highlights is the spacious wrap-around terrace with panoramic sea views, perfect for enjoying the Costa del Sol's climate.

The property features 2 bedrooms, both with direct access to the terrace, and 2 stylish full bathrooms.

With its elegant design, high-quality finishes, and abundant natural light, this home is both comfortable and functional, ideal for year-round living or as a holiday retreat.

This wonderful penthouse is undoubtedly an ideal option as a permanent residence, holiday home, or investment in Benalmádena Costa.

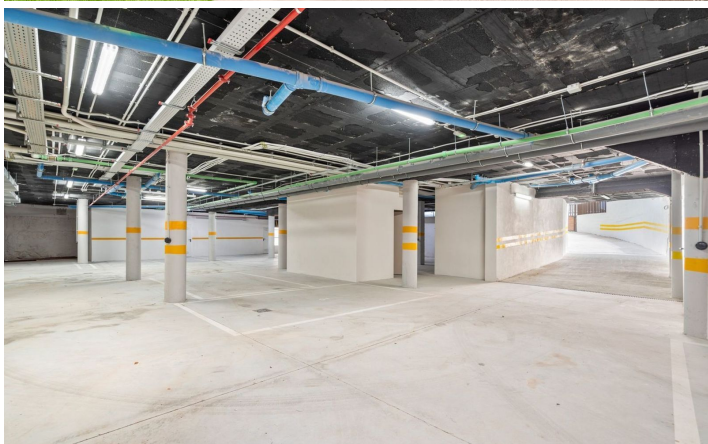
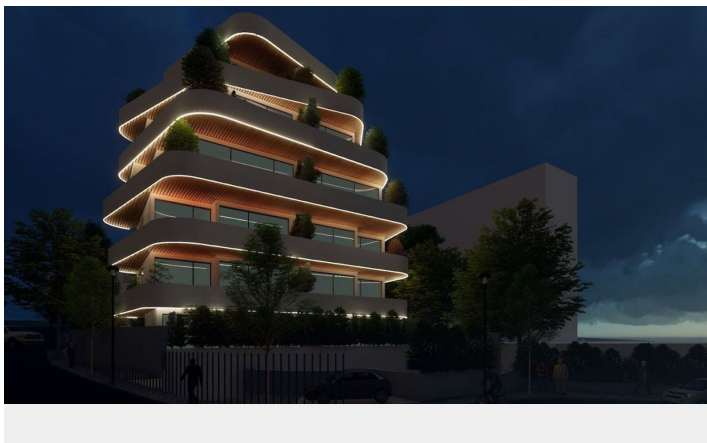
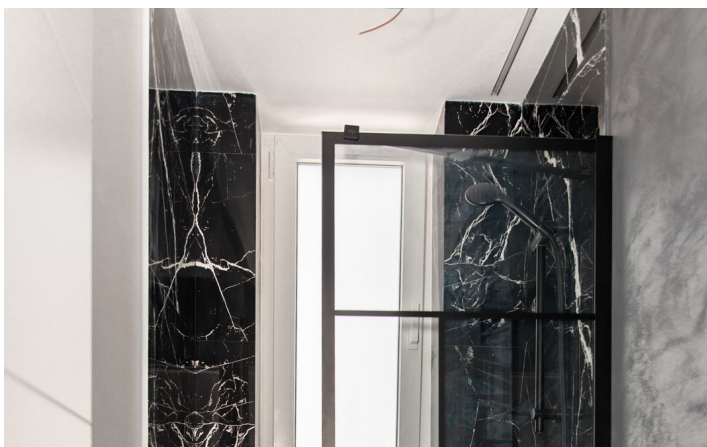
[View Property Online](#)



GALLERY







ViVi Real Estate | Calle Almendralejo de Jarales 5 Mijas Costa, 29640

Tel: +34 672 816 975

Email: [sales@vivi-realestate.com](mailto:sales@vivi-realestate.com) | Web: [www.vivi-realestate.com](http://www.vivi-realestate.com)