



# Penthouse Duplex in Atalaya

Price € 799,000

Bedrooms	2
Bathrooms	2
Build Size	118 m²
Terrace	122 m²
Plot Size	240 m²

SETTING

- ✓ Frontline Golf
- ✓ Close To Golf

ORIENTATION

- ✓ South

CONDITION

- ✓ Excellent

POOL

- ✓ Communal

CLIMATE CONTROL

- ✓ Air Conditioning

VIEWS

- ✓ Sea
- ✓ Mountain
- ✓ Golf

FEATURES

- ✓ Covered Terrace
- ✓ Lift
- ✓ Private Terrace
- ✓ Solarium
- ✓ Utility Room
- ✓ Ensuite Bathroom
- ✓ Marble Flooring
- ✓ Double Glazing

FURNITURE

- ✓ Not Furnished

KITCHEN

- ✓ Fully Fitted

GARDEN

- ✓ Communal

SECURITY

- ✓ Gated Complex

PARKING

- ✓ Underground

## CATEGORY

✓ Golf

✓ Luxury

---

### 2-Bedroom Penthouse Apartment with stunning Sea and golf Views for Sale

Located in an exclusive development, this exquisite 2-bedroom apartment offers a luxurious lifestyle with breathtaking views of the golf course, sea, and mountains. The modern, open-plan living space is flooded with natural light, featuring a sleek kitchen and a spacious lounge area that opens onto a terrace.

The real highlight of this property is the expansive roof solarium, perfect for entertaining or relaxing while enjoying panoramic views of the Mediterranean coastline and surrounding nature.

Both bedrooms are generously sized, with built-in wardrobes and they both enjoy elegant en-suite bathrooms.

Residents enjoy access to a communal pool and landscaped gardens and the development has 24-hour security. This apartment is ideal for golf enthusiasts and those seeking a tranquil retreat in one of the Costa del Sol's most sought-after areas.

A must-see for anyone looking to invest in luxury living with unmatched views!

Fees:

IBI Fees: 450€ per year

Community fees: 330€ per month

[View Property Online](#)

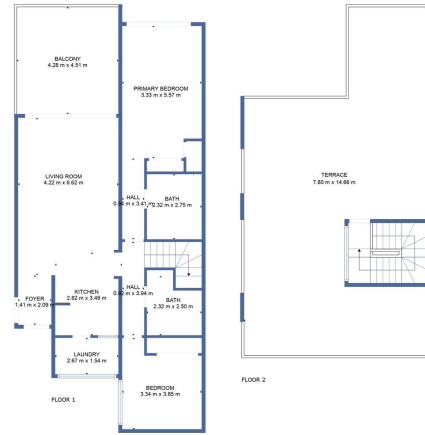
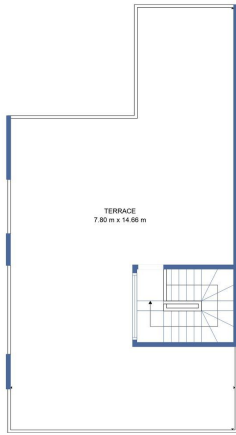
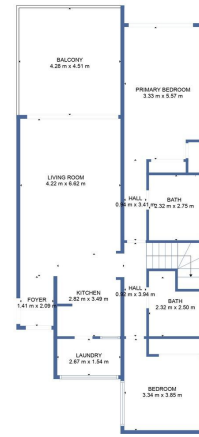


GALLERY









ViVi Real Estate | Calle Almendralejo de Jarales 5 Mijas Costa, 29640  
 Tel: +34 672 816 975  
 Email: sales@vivi-realestate.com | Web: www.vivi-realestate.com