

Residential Plot in Atalaya

Price **€ 980,000**

Plot Size

865 m²

SETTING

- ✓ Beachside
- ✓ Close To Shops
- ✓ Close To Schools
- ✓ Close To Golf
- ✓ Close To Sea
- ✓ Close To Marina
- ✓ Close To Port
- ✓ Close To Town
- ✓ Urbanisation

ORIENTATION

- ✓ South East
- ✓ South
- ✓ South West

POOL

- ✓ Private
- ✓ Room For Pool

VIEWS

- ✓ Mountain
- ✓ Street
- ✓ Garden
- ✓ Urban

GARDEN

- ✓ Private

UTILITIES

- ✓ Electricity
- ✓ Drinkable Water

CATEGORY

- ✓ Beachfront
- ✓ Contemporary
- ✓ Investment
- ✓ With Planning Permission

Exclusive Beachside Plot – Costa del Sol

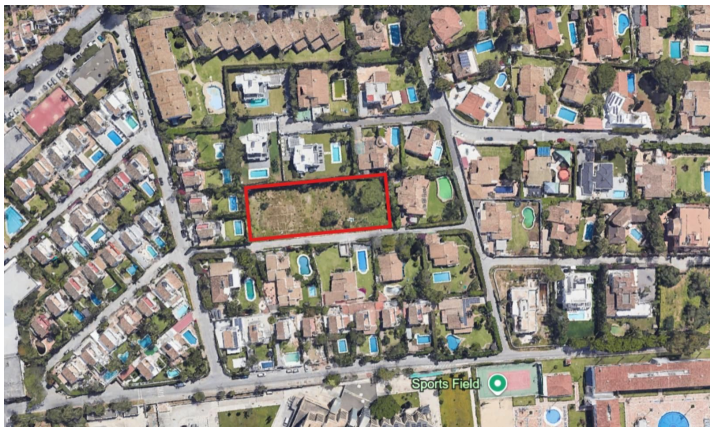
PLOT 2 - A rare opportunity to acquire a flat, green plot of 865 m² in a prime location on the Costa del Sol. Perfectly suited to build a luxury villa or an elegant private residence, this beautiful plot offers effortless construction with full planning permissions already in place.

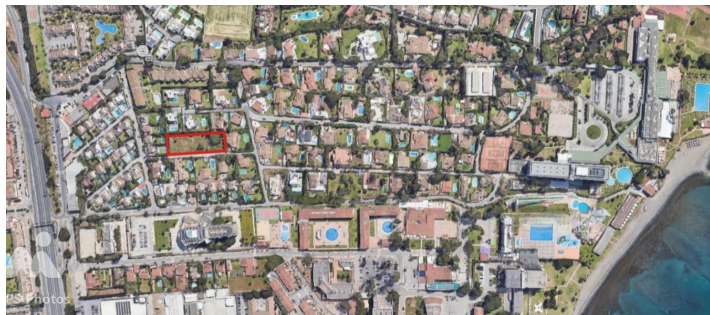
Just a short stroll from the golden sands, the plot also enjoys walking-distance access to a supermarket, pharmacy, and quality restaurants. Situated in a peaceful and exclusive area, it benefits from excellent road connections, with Puerto Banús, Marbella, and Estepona just minutes away.

This is more than just land; it’s the foundation for a lifestyle defined by elegance, convenience, and coastal beauty.

[View Property Online](#)

GALLERY





ViVi Real Estate | Calle Almendralejo de Jarales 5 Mijas Costa, 29640

Tel: +34 672 816 975

Email: sales@vivi-realestate.com | Web: www.vivi-realestate.com