

# Ground Floor Apartment in Nueva Andalucía

Price € 619,000

Bedrooms	2
Bathrooms	2
Build Size	121 m²
Terrace	49 m²
Plot Size	170 m²

## SETTING

- ✓ Close To Golf
- ✓ Urbanisation

## ORIENTATION

- ✓ South West

## CONDITION

- ✓ Excellent

## POOL

- ✓ Communal

## CLIMATE CONTROL

- ✓ Air Conditioning

## VIEWS

- ✓ Sea
- ✓ Mountain
- ✓ Panoramic
- ✓ Forest

## FEATURES

- ✓ Lift
- ✓ Private Terrace
- ✓ Gym
- ✓ Storage Room
- ✓ Double Glazing
- ✓ 24 Hour Reception
- ✓ Fiber Optic

## FURNITURE

- ✓ Fully Furnished

## KITCHEN

- ✓ Fully Fitted

## GARDEN

- ✓ Communal
- ✓ Landscaped

## SECURITY

- ✓ Gated Complex
- ✓ 24 Hour Security

## PARKING

- ✓ Underground

## UTILITIES

✓ Electricity

## CATEGORY

✓ Investment

✓ Contemporary

---

New on the Market !

This luxury Urbanisation in Aloha, Nueva Andalucia give you the Beverley Hills Feeling

The view is Panoramic over the hills down to the Mediterranean Sea and overlooking the pool area as well

2bedrooms and 2 bathrooms with an L -shaped Living room .It is a corner apartment with lots of light and high

ceiling ,is a very nice home feeling. Underground parking and a big Storage room.The highlight of this home is the

lovely Terrace ,Chill out corner,outdoor dinners ,drinks ,A gate from the terrace direct to the community garden and

pool. A luxury Fitness room with changing rooms, Outdoor kitchen/ Bar area for having your privat parties in a Natural

setting .This is a property to be viewed to get the the lovely home feeling

5 min to Puerto Banus ,Centro Plaza

Can be viewed with short notice!

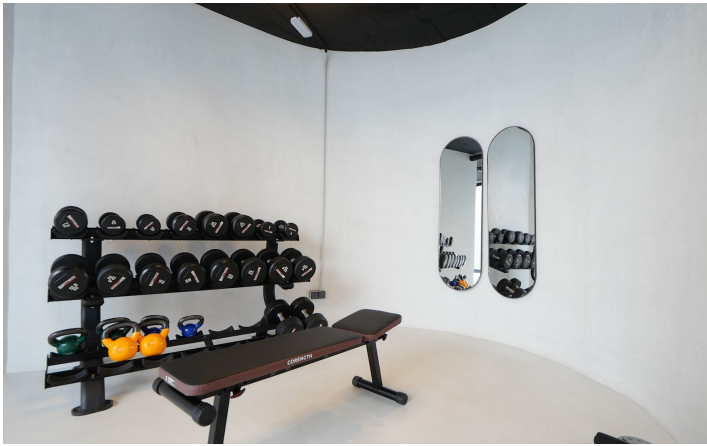
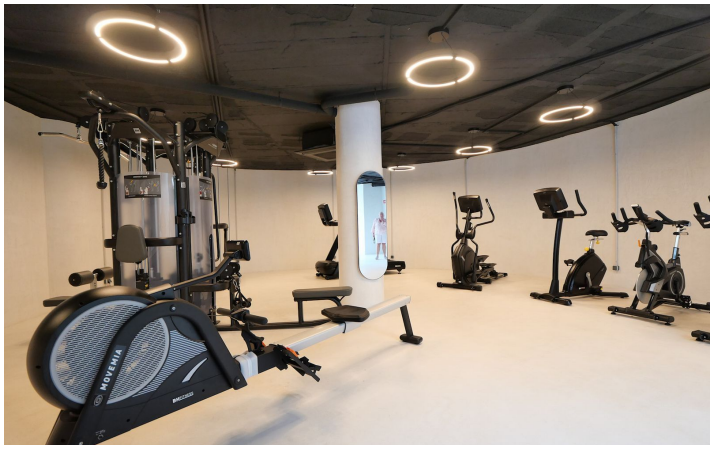
[View Property Online](#)

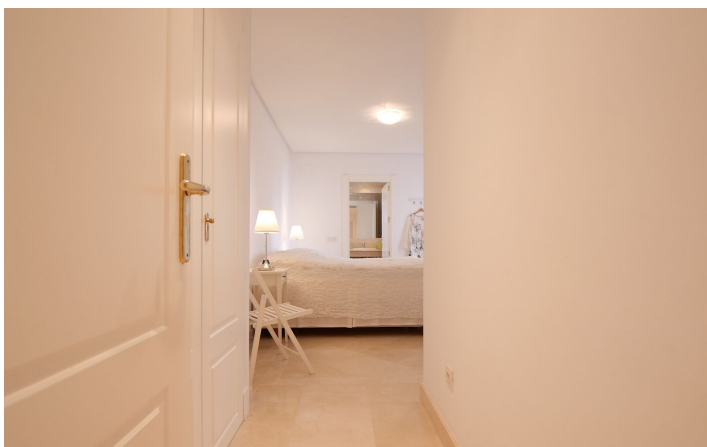


GALLERY









---

Vivi Real Estate | Calle Almendralejo de Jarales 5 Mijas Costa, 29640  
Tel: +34 672 816 975  
Email: [sales@vivi-realestate.com](mailto:sales@vivi-realestate.com) | Web: [www.vivi-realestate.com](http://www.vivi-realestate.com)