



Residential Plot in Benahavís

Price **€ 850,000**

Build Size

449 m²

Plot Size

2200 m²

ORIENTATION

✓ West

VIEWS

✓ Sea

✓ Mountain

✓ Country

✓ Panoramic

INVESTORS PAY ATTENTION!

A wonderful opportunity....here is a plot of land with great potential.

The original design offers a total build size of 440m², of which covered terraces are 164m², uncovered terraces 310m², a pool of 51m², a garage of 45m² and interior built surface. of 258m²

An in depth assessment of the project and build have been carried out and there is a lot of information to be shared with an interested party.

Please note: the plans included here are simply an idea. There is no project on this plot.

El Real de la Quinta goes from strength to strength and a plot like this one is a diamond with a huge potential.

Up to 4 levels can be built on this plot, and a building license can be secured from the Benahavís municipality in as little as 3 months, streamlining the development process.

For any interested person or developer, get in touch to find out more about the possibility of building alongside 2 other owners on this location, who have already made significant in-roads into the preparations.

Super west facing plot within the area of El Real de la Quinta. This plot is flat and is ready for an architect to come and design a dream home.

Overlooking what will be the golf course of this luxurious new area in Benahavis, the villa that is built here will have stunning views and will be able to access incredible facilities.

The resort includes premium amenities, such as a central lake, clubhouse with outdoor swimming pool, gym, spa, tennis courts, and a golf course with its own academy. Additionally, the nearby 5-star hotel, operated by the esteemed Banyan Tree Group, enhances the area's prestige.

Real de La Quinta Residential Country Club Resort® is an enchanting 200 hectare residential resort, seamlessly integrated into the idyllic foothills of the Sierra de las Nieves overlooking the majestic La Concha mountain, the picturesque Costa del Sol and bordering the UNESCO biosphere reserve. Fulfil your lifestyle dreams with the Real de La Quinta real estate project where nature coexists with the modern world.

GREAT OPPORTUNITY TO OBTAIN A BUILDING PLOT IN THE MOST UP AND COMING LOCATION

BUILDING PLOT IN REAL DE LA QUINTA WITH GORGEOUS VIEWS AND WEST ORIENTATION.

[View Property Online](#)

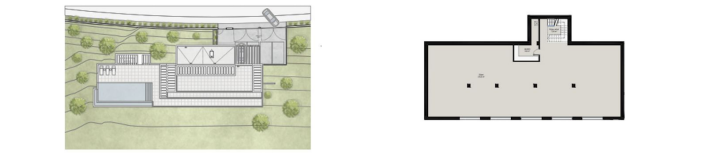
GALLERY



VILLA TYPE A | MASTERPLAN | PLANO MASTER

- BUILT SURFACE SUPERFICIE CONSTRUIDA 54,78 m²
- UNCOVERED TERRACES TERRAZAS DESCUBIERTAS 105,38 m²
- BEDROOMS DORMITORIOS 1
- BATHROOM BAÑOS 1
- PARKING GARAGE 96,38 m²

VILLA TYPE A | BASEMENT | SOTANO



VILLA TYPE A | GROUND FLOOR | PLANTA BAJA

VILLA TYPE A | FIRST FLOOR | PRIMERA PLANTA



VILLA TYPE A | SECOND FLOOR | SEGUNDA PLANTA

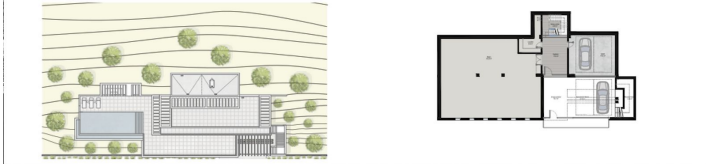
- BUILT SURFACE SUPERFICIE CONSTRUIDA 54,78 m²
- UNCOVERED TERRACES TERRAZAS DESCUBIERTAS 105,38 m²
- BEDROOMS DORMITORIOS 1
- BATHROOM BAÑOS 1
- PARKING GARAGE 96,38 m²



VILLA TYPE B | MASTERPLAN | PLANO MASTER

- BUILT SURFACE SUPERFICIE CONSTRUIDA 54,78 m²
- UNCOVERED TERRACES TERRAZAS DESCUBIERTAS 105,38 m²
- BEDROOMS DORMITORIOS 1
- BATHROOM BAÑOS 1
- PARKING GARAGE 96,38 m²

VILLA TYPE B | BASEMENT | SOTANO



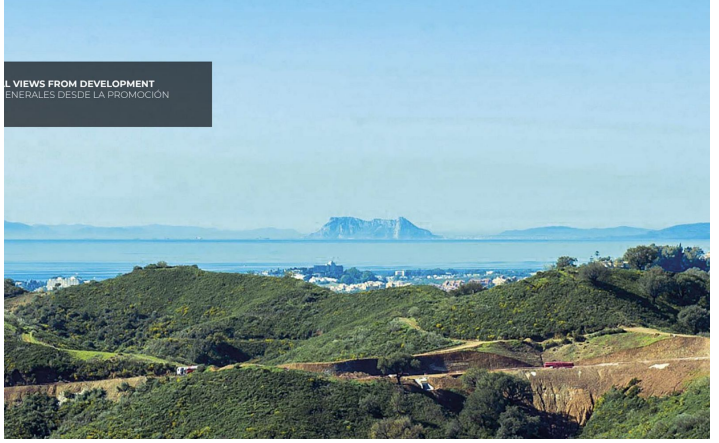
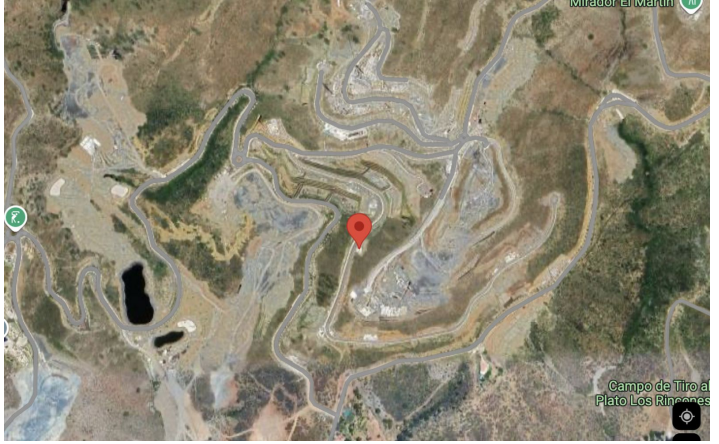
VILLA TYPE B | GROUND FLOOR | PLANTA BAJA

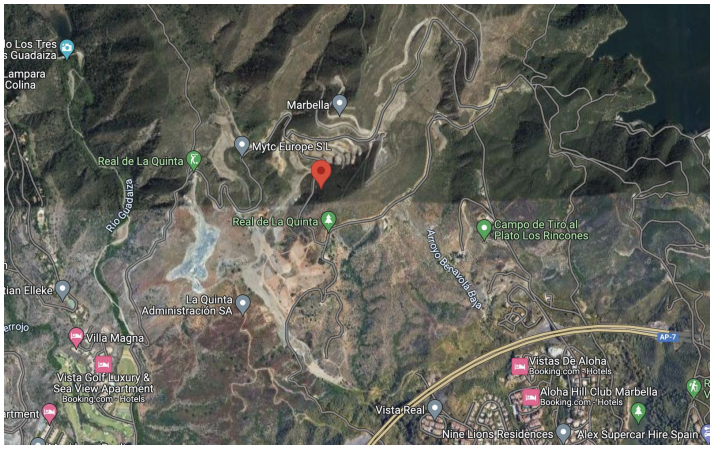
VILLA TYPE B | FIRST FLOOR | PRIMERA PLANTA

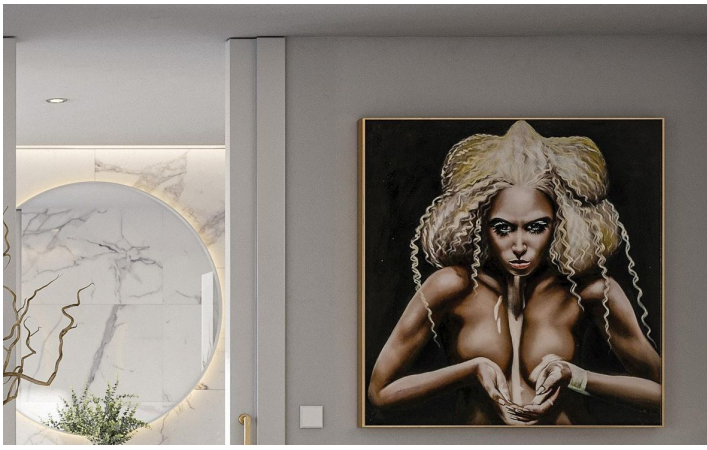


VILLA TYPE B | SECOND FLOOR | SEGUNDA PLANTA

- BUILT SURFACE SUPERFICIE CONSTRUIDA 54,78 m²
- UNCOVERED TERRACES TERRAZAS DESCUBIERTAS 105,38 m²
- BEDROOMS DORMITORIOS 1
- BATHROOM BAÑOS 1







ViVi Real Estate | Calle Almendralejo de Jarales 5 Mijas Costa, 29640

Tel: +34 672 816 975

Email: sales@vivi-realestate.com | Web: www.vivi-realestate.com