

Reference: R5164204



WWW.VIVI-REALESTATE.COM  
WWW.VIVI-HOMES.COM





# Middle Floor Apartment in Benalmadena Costa

Price € 995,000

Bedrooms	3
Bathrooms	2
Build Size	136 m <sup>2</sup>
Terrace	55 m <sup>2</sup>
Plot Size	191 m <sup>2</sup>

## SETTING

- ✓ Close To Port
- ✓ Close To Town
- ✓ Close To Shops
- ✓ Close To Marina
- ✓ Close To Sea
- ✓ Urbanisation

## ORIENTATION

- ✓ South
- ✓ South West

## CONDITION

- ✓ Excellent

## POOL

- ✓ Communal

## CLIMATE CONTROL

- ✓ Air Conditioning
- ✓ U/F Heating
- ✓ Hot A/C
- ✓ U/F/H Bathrooms
- ✓ Cold A/C

## VIEWS

- ✓ Sea
- ✓ Beach
- ✓ Panoramic

## FEATURES

- ✓ Covered Terrace
- ✓ Near Transport
- ✓ Sauna
- ✓ Ensuite Bathroom
- ✓ Fiber Optic
- ✓ Lift
- ✓ Private Terrace
- ✓ Storage Room
- ✓ Jacuzzi
- ✓ Fitted Wardrobes
- ✓ Gym
- ✓ Utility Room
- ✓ Double Glazing

## FURNITURE

- ✓ Optional

## KITCHEN

- ✓ Fully Fitted

## GARDEN

- ✓ Communal

## SECURITY

- ✓ Gated Complex
- ✓ Alarm System
- ✓ Electric Blinds
- ✓ Entry Phone

## PARKING

- ✓ Underground
- ✓ More Than One
- ✓ Private

## UTILITIES

- ✓ Electricity
- ✓ Drinkable Water

## CATEGORY

- ✓ Holiday Homes
- ✓ Resale
- ✓ Investment
- ✓ Contemporary
- ✓ Luxury

---

Luxury Apartment with tourist license for Sale in Benalmádena The one- sea views - Jacuzzi - 2 parking spaces -direct access to apartment with lift

Discover this stunning 3 bedroom, 2-bathroom apartment located in a prime area of Benalmádena, offering luxury, privacy, and panoramic sea views. This modern property is perfect as a permanent residence, holiday home, or investment, thanks to its unbeatable location and exclusive features.

### Key Features:

- Bright and spacious open-plan living and dining area
- Fully equipped modern kitchen with premium appliances
- Master bedroom with en-suite bathroom and built-in wardrobes
- Large private terrace with jacuzzi, ideal for relaxing or entertaining
- Air conditioning (hot & cold)
- Direct lift access into the apartment
- High rental potential - ideal for both personal use and investment

### Location:

- Just 10 minutes from Málaga Airport
- Close to Benalmádena Pueblo and Arroyo de la Miel. Close to beaches, shops, and public transport
- Near golf courses, international schools, and health centers
- Ground Floor Apartment, Benalmadena Costa, Costa del Sol.
- 3 Bedrooms, 2 Bathrooms, Built 136 m<sup>2</sup>.

Setting : Close To Port, Close To Shops, Close To Sea, Close To Town, Close To Marina, Urbanisation.

Orientation : South.

Condition : Excellent.

Pool : Communal, Heated.

Climate Control : Air Conditioning, Hot A/C, Cold A/C, U/F Heating, U/F/H Bathrooms.

Views : Sea, Beach, Panoramic.

Features : Covered Terrace, Lift, Fitted Wardrobes, Near Transport, Private Terrace, Gym, Sauna, Storage Room, Utility Room, Ensuite Bathroom, Jacuzzi, Double Glazing, Fiber Optic.

Furniture : Optional.

Kitchen : Fully Fitted.

Garden : Communal.

Security : Gated Complex, Electric Blinds, Entry Phone, Alarm System.

Parking : Underground, Private.

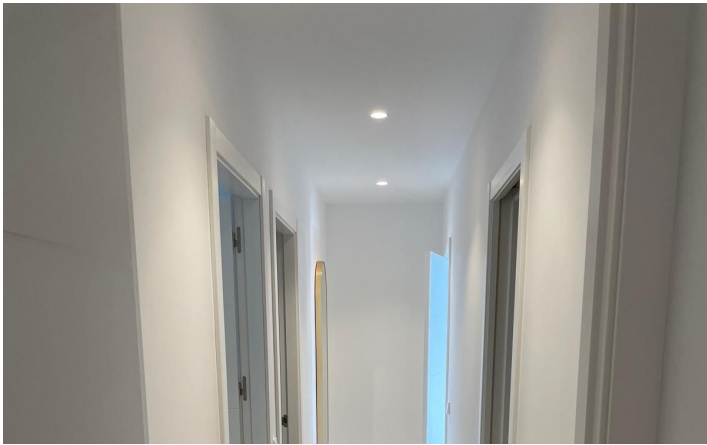
Utilities : Electricity, Drinkable Water.

Category : Holiday Homes, Investment, Luxury, Resale, Contemporary.

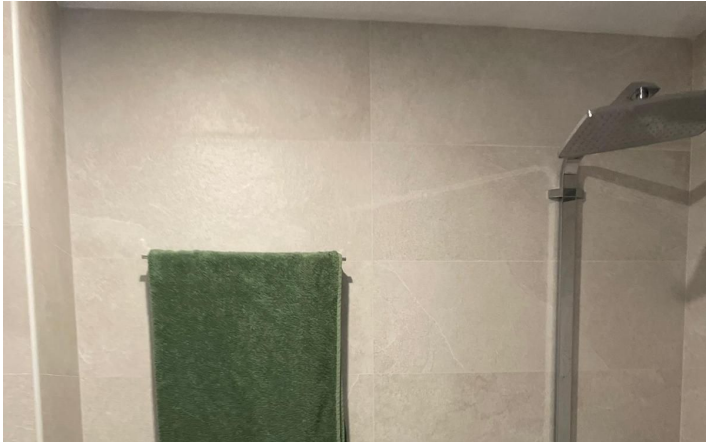
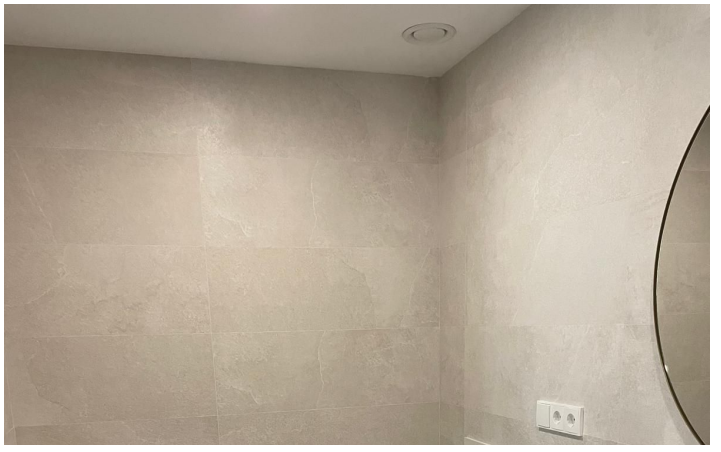
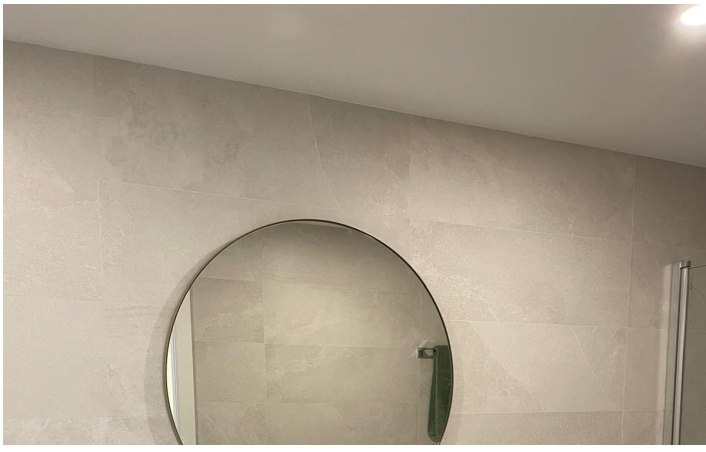
"In compliance with Decree 218/2005 of the Andalusian Regional Government of October 11, we inform you that notary, registry, transfer tax (ITP), and other expenses related to the purchase are not included in the price. The information provided is for guidance only, is not binding, and has no contractual value. The offer is subject to errors, price changes, availability, and/or withdrawal from the market without prior notice. This information may have been modified but not yet updated. We recommend contacting the agency to obtain the most recent details and/or to confirm the information provided here."

[View Property Online](#)

# GALLERY







---

Vivi Real Estate | Calle Almendralejo de Jarales 5 Mijas Costa, 29640

Tel: +34 672 816 975

Email: [sales@vivi-realestate.com](mailto:sales@vivi-realestate.com) | Web: [www.vivi-realestate.com](http://www.vivi-realestate.com)