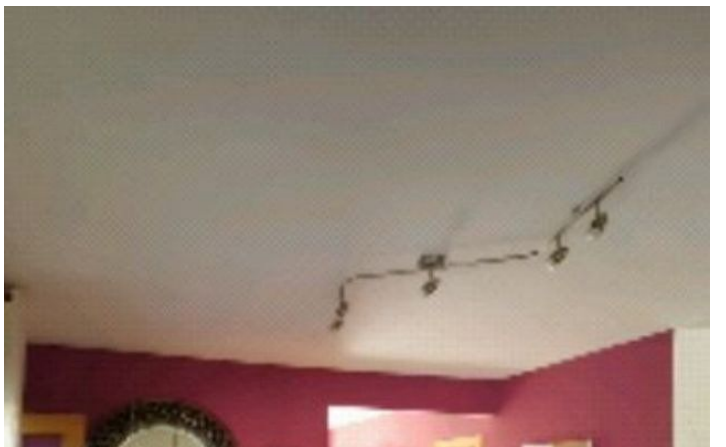


Reference: R5283604



WWW.VIVI-REALESTATE.COM
WWW.VIVI-HOMES.COM





Detached Villa in El Pinillo

Price **€ 1,030,000**

Bedrooms	4
Bathrooms	4
Build Size	309 m²
Plot Size	1160 m²

CONDITION

✓ Good

POOL

✓ Private

CLIMATE CONTROL

✓ Air Conditioning

✓ Central Heating

FEATURES

✓ Private Terrace

✓ Utility Room

✓ Wood Flooring

FURNITURE

✓ Part Furnished

KITCHEN

✓ Fully Fitted

PARKING

✓ Garage

UTILITIES

✓ Drinkable Water

We present this exceptional villa located in the sought-after El Pinillo area of Torremolinos. The property underwent the full renovation in 2007 and it stands out for its spaciousness and comfort, ideal for those seeking a peaceful home without sacrificing urban amenities. It underwent the full renovation in 2007.

On its two floors, you will find four bedrooms (three with en-suite bathrooms), a guest toilet, a fully equipped independent kitchen, and a spacious living-dining room with access to the private garden. This property also boasts a large private swimming pool, private parking, and a storage room in the basement. It is just steps away from all amenities, such as a shopping center, restaurants, parks, and schools (Sunnyview School is a 3-minute walk).

We remind you that our fees are included in the sale price; therefore, you will not incur any additional expenses for management or real estate advice. However, it is important to note that notary, registration, and property transfer tax (ITP) costs are separate from the indicated price and must be considered separately, as stipulated by Decree 218/2005 of the Andalusian Regional Government, dated October 11. The information provided is for guidance

purposes only and may be subject to change; we recommend contacting our agency directly for updated information or to verify any aspect mentioned here.

[View Property Online](#)

GALLERY



Vivi Real Estate | Calle Almendralejo de Jarales 5 Mijas Costa, 29640

Tel: +34 672 816 975

Email: sales@vivi-realestate.com | Web: www.vivi-realestate.com