



# Semi-Detached House in Nueva Andalucía

Price € 795,000

Bedrooms 2

Bathrooms 2

Build Size 162 m<sup>2</sup>

Plot Size 162 m<sup>2</sup>

## SETTING

- ✓ Beachside
- ✓ Close To Shops
- ✓ Close To Schools
- ✓ Close To Golf
- ✓ Close To Sea
- ✓ Close To Port
- ✓ Close To Town

## ORIENTATION

- ✓ West

## CONDITION

- ✓ Excellent

## POOL

- ✓ Communal

## CLIMATE CONTROL

- ✓ Air Conditioning

## VIEWS

- ✓ Mountain
- ✓ Street
- ✓ Garden
- ✓ Urban

## FEATURES

- ✓ Covered Terrace
- ✓ Private Terrace
- ✓ Fitted Wardrobes
- ✓ Storage Room
- ✓ Near Transport
- ✓ Marble Flooring

## GARDEN

- ✓ Communal

## SECURITY

- ✓ Gated Complex

## PARKING

- ✓ Communal

## CATEGORY

- ✓ Luxury

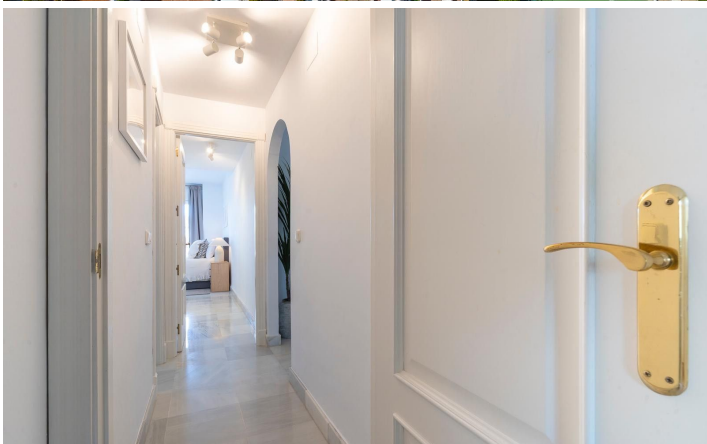
---

Wonderful property in a prime location! Walking distance to everything you can think of: 5mn walk to Aloha Gardens (restaurants, supermarkets, shops, nightlife..), 10mn walk to Aloha Pueblo, and 20mn walk to Aloha Golf Club. As you enter, your senses awaken to the spacious garden full of life and energy. It is meticulously taken care of, offering a terrace and chill out area, and an extensive grass outside space full of fruit trees (avocado, lemon, to name a few). The south-west orientation allows bright light coming in, and sun exposure. The inside has been nearly entirely renovated, and the layout is nicely done, between living and sleeping areas. It includes a living and dining room, open plan kitchen with all appliances, two large bedrooms, two full bathrooms, laundry and storage room. There is an extra garden in the back of the property, that leads to the lovely communal areas: big swimming pool, and landscaped gardens. There is a covered parking. Exquisite property, easy viewings, must see!

[View Property Online](#)

# GALLERY





Vivi Real Estate | Calle Almendralejo de Jarales 5 Mijas Costa, 29640  
Tel: +34 672 816 975  
Email: sales@vivi-realestate.com | Web: www.vivi-realestate.com