

Reference: R5371342



WWW.VIVI-REALESTATE.COM
WWW.VIVI-HOMES.COM



Penthouse in Estepona

Price **€ 1,200,000**

Bedrooms	3
Bathrooms	2
Build Size	275 m ²
Terrace	90 m ²
Plot Size	13365 m ²

SETTING

- ✓ Close To Shops
- ✓ Close To Town
- ✓ Close To Forest

ORIENTATION

- ✓ South

CONDITION

- ✓ Good

POOL

- ✓ Private
- ✓ Heated

CLIMATE CONTROL

- ✓ Fireplace

VIEWS

- ✓ Sea
- ✓ Mountain
- ✓ Forest

FEATURES

- ✓ Storage Room
- ✓ Ensuite Bathroom
- ✓ Barbeque

FURNITURE

- ✓ Not Furnished

KITCHEN

- ✓ Fully Fitted

GARDEN

- ✓ Private

PARKING

- ✓ Covered
- ✓ More Than One
- ✓ Private

CATEGORY

- ✓ Resale

Luxury 3-Bedroom Duplex Penthouse for Sale in Cataleya, Atalaya Golf – Panoramic Views & Resort Amenities

Welcome to this luxury 3-bedroom duplex penthouse for sale in Cataleya, Atalaya Golf, located in one of the most prestigious gated communities in Estepona. Set within beautifully landscaped gardens and offering spectacular golf and panoramic mountain views, this modern residence blends elegance, comfort, and convenience in the heart of the Costa del Sol.

Property Highlights

3 Spacious Bedrooms | 2 Bathrooms (including master en-suite)

Open-plan living and dining area with direct access to a large terrace

Floor-to-ceiling windows flood the home with natural light

Modern fully equipped kitchen with premium appliances

Private solarium and large terraces perfect for outdoor living

2 underground parking spaces + storage room

This contemporary penthouse in Cataleya features high-end finishes, sleek design, and a generous floor plan ideal for both family living and entertaining. Enjoy seamless indoor-outdoor flow with moveable glass partitions that open to stunning views over the golf course and surrounding mountains.

Exclusive Community Amenities

450 m² outdoor lagoon-style swimming pool with beach-entry

Heated indoor pool for year-round use

Over 27,000 m² of landscaped tropical gardens and green zones

Secure, gated community with high privacy

Walking distance to Atalaya Golf and El Paraíso Golf Clubs

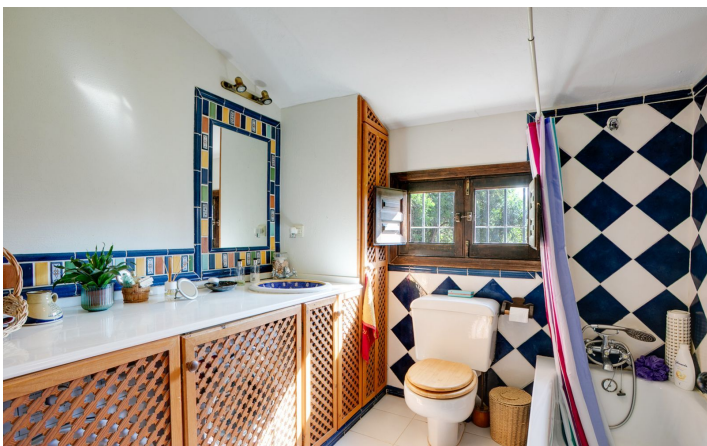
Prime Location in Atalaya, Estepona

Perfectly situated between San Pedro de Alcántara, Benahavís, and Marbella, this penthouse offers easy access to international schools, restaurants, shops, beaches, and golf resorts — all within a 10-15 minute drive.

Contact us today to schedule a private viewing of this exclusive Cataleya duplex penthouse with panoramic golf views — available now but in high demand.

[View Property Online](#)

GALLERY





Vivi Real Estate | Calle Almendralejo de Jarales 5 Mijas Costa, 29640

Tel: +34 672 816 975

Email: sales@vivi-realestate.com | Web: www.vivi-realestate.com