



Townhouse in Nueva Andalucía

Price € 679,000

Bedrooms	3
Bathrooms	2
Build Size	183 m ²
Plot Size	183 m ²

SETTING

- ✓ Town
- ✓ Close To Golf
- ✓ Close To Town
- ✓ Close To Schools
- ✓ Urbanisation

ORIENTATION

- ✓ South West

CONDITION

- ✓ Recently Renovated

POOL

- ✓ Communal

CLIMATE CONTROL

- ✓ Air Conditioning
- ✓ Hot A/C
- ✓ Fireplace

VIEWS

- ✓ Sea
- ✓ Mountain
- ✓ Panoramic

FEATURES

- ✓ Covered Terrace
- ✓ Private Terrace
- ✓ Storage Room
- ✓ Fiber Optic

FURNITURE

- ✓ Fully Furnished

KITCHEN

- ✓ Fully Fitted

GARDEN

- ✓ Communal
- ✓ Private

SECURITY

- ✓ Gated Complex
- ✓ 24 Hour Security

PARKING

- ✓ Garage
- ✓ Private

CATEGORY

✓ Distressed

✓ Holiday Homes

✓ Investment

✓ Resale

Located within the established community of Sol Europa Golf in Nueva Andalucía, this recently renovated townhouse offers generous living space and direct access to the communal gardens and swimming pool.

The townhouse is distributed over three levels and has been renovated in a clean contemporary style, creating a move in ready family home in one of the most desirable residential areas of Marbella.

On the ground floor, the living and dining area connects with an open plan kitchen and provides direct access to the east facing main terrace. From here, there is immediate access to the communal gardens and swimming pool, creating an easy indoor outdoor flow that works particularly well for families and everyday living. The east facing orientation makes this terrace especially pleasant during the morning and early afternoon hours.

This level also includes one bedroom and a bathroom, ideal for guests or family members who prefer ground floor living.

The first floor consists of three spacious bedrooms and a second bathroom. The master bedroom features an ensuite bathroom together with its own private balcony.

On the upper level, the property offers a practical storage room with direct access to the rooftop solarium. Thanks to its open positioning, the solarium enjoys sun throughout the day and adds an additional outdoor living space to the property.

Residents of Sol Europa Golf benefit from a well maintained communal swimming pool and gated community parking within the urbanisation.

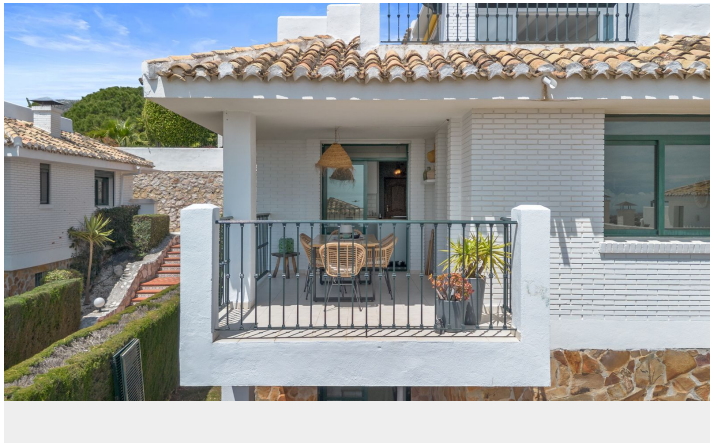
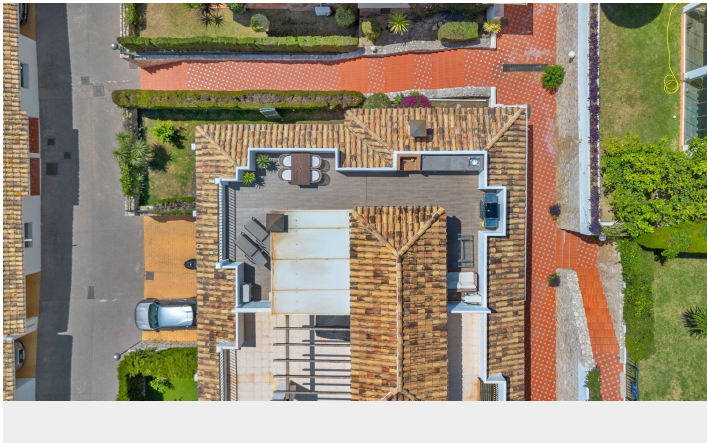
A bright and well balanced family townhouse in a consistently popular part of Nueva Andalucía, close to golf courses, international schools, restaurants, Puerto Banús and Marbella.

€675,000

[View Property Online](#)

GALLERY







Vivi Real Estate | Calle Almendralejo de Jarales 5 Mijas Costa, 29640

Tel: +34 672 816 975

Email: sales@vivi-realestate.com | Web: www.vivi-realestate.com