

Detached Villa in Manilva

Price € 557,000

Bedrooms	4
Bathrooms	2
Build Size	122 m ²
Terrace	30 m ²
Plot Size	152 m ²

SETTING

- ✓ Town
- ✓ Close To Golf
- ✓ Close To Sea
- ✓ Close To Marina
- ✓ Commercial Area
- ✓ Close To Port
- ✓ Close To Schools
- ✓ Urbanisation
- ✓ Port
- ✓ Close To Shops
- ✓ Marina

ORIENTATION

- ✓ West

CONDITION

- ✓ Excellent

POOL

- ✓ Communal
- ✓ Children`s Pool

CLIMATE CONTROL

- ✓ Air Conditioning
- ✓ Hot A/C
- ✓ Cold A/C

VIEWS

- ✓ Garden
- ✓ Street
- ✓ Courtyard
- ✓ Urban

FEATURES

- ✓ Covered Terrace
- ✓ Near Transport
- ✓ Ensuite Bathroom
- ✓ Double Glazing
- ✓ Lift
- ✓ Private Terrace
- ✓ Access for people with reduced mobility
- ✓ Near Church
- ✓ Fitted Wardrobes
- ✓ WiFi
- ✓ Marble Flooring
- ✓ Fiber Optic

FURNITURE

- ✓ Fully Furnished

KITCHEN

- ✓ Fully Fitted

GARDEN

- ✓ Communal

SECURITY

✓ Gated Complex

PARKING

✓ Street

Super Spacious Detached Villa in Manilva

6 Bedrooms | 500 m² Plot | High Rental Potential

Discover this exceptional detached villa in the heart of Manilva, offering generous living spaces, privacy, and outstanding investment potential. Set on a 500 m² plot, this impressive property features 6 spacious bedrooms, making it ideal for large families, holiday rentals, or luxury getaways.

With its versatile layout, outdoor entertaining areas, and prime Costa del Sol location, this villa presents an excellent opportunity for both permanent living and high-yield rental income.

Key Features:

6 spacious bedrooms

500 m² private plot

Bright and airy interiors

Ideal for holiday rentals or large families

Excellent investment opportunity

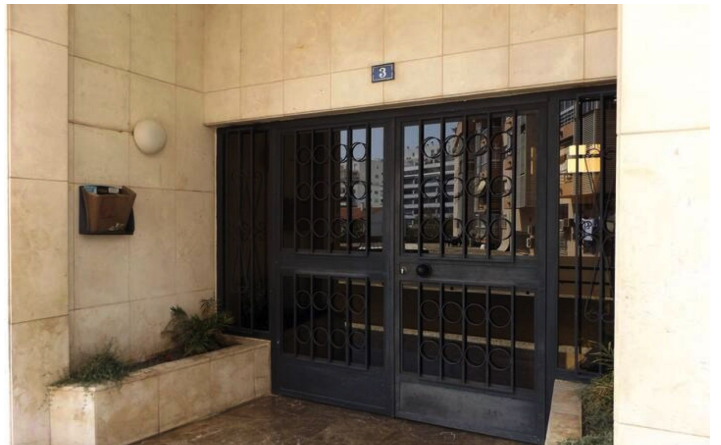
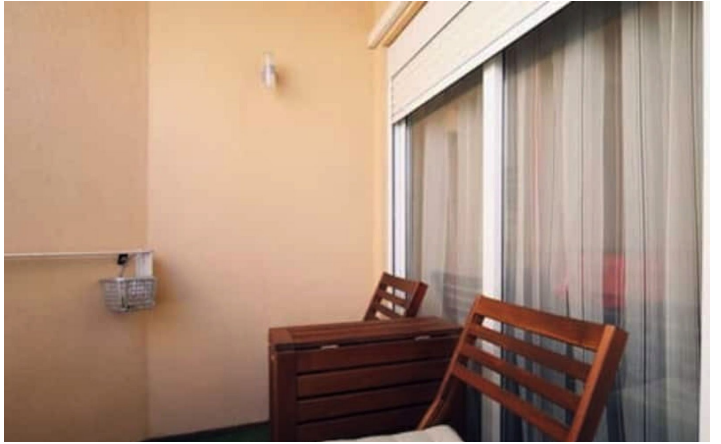
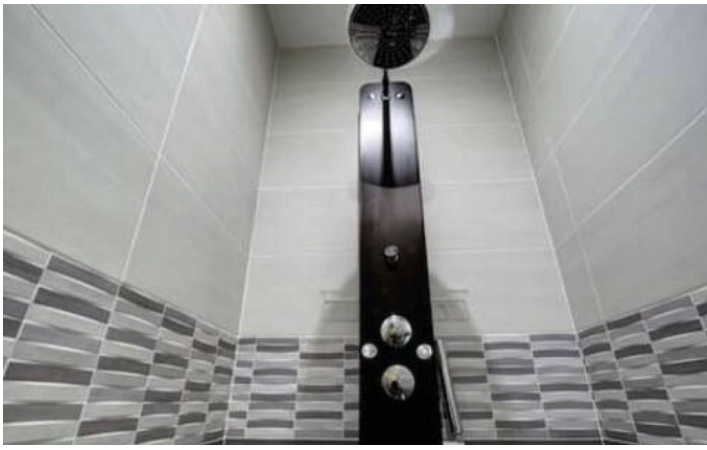
Located close to beaches, golf courses, and local amenities

A rare opportunity to own a spacious villa in one of the Costa del Sol's growing investment hotspots.

[View Property Online](#)

GALLERY





Vivi Real Estate | Calle Almendralejo de Jarales 5 Mijas Costa, 29640
Tel: +34 672 816 975
Email: sales@vivi-realestate.com | Web: www.vivi-realestate.com