



# Middle Floor Apartment in Nueva Andalucía

Price € 549,000

Bedrooms	2
Bathrooms	2
Build Size	94 m <sup>2</sup>
Terrace	15 m <sup>2</sup>
Plot Size	109 m <sup>2</sup>

## SETTING

- ✓ Close To Golf
- ✓ Close To Sea
- ✓ Close To Port
- ✓ Close To Town
- ✓ Close To Shops
- ✓ Close To Schools

## ORIENTATION

- ✓ East

## CONDITION

- ✓ Good

## POOL

- ✓ Communal

## CLIMATE CONTROL

- ✓ Air Conditioning
- ✓ Fireplace

## VIEWS

- ✓ Sea
- ✓ Mountain
- ✓ Panoramic

## FEATURES

- ✓ Lift
- ✓ Private Terrace
- ✓ Fitted Wardrobes
- ✓ Storage Room
- ✓ Near Transport
- ✓ Ensuite Bathroom

## KITCHEN

- ✓ Fully Fitted

## GARDEN

- ✓ Communal

## SECURITY

- ✓ Gated Complex

## PARKING

- ✓ Garage

---

Welcome to this bright apartment in amazing location with panoramic views!

This fantastic 2-bedroom, 2-bathroom apartment enjoys breathtaking panoramic views of the La Concha mountain, the Mediterranean Sea, and Puerto Banús.

Ideally located within walking distance of restaurants, cafés, shops, supermarkets, and all local amenities, as well as Puerto Banús and the beach. This property offers the perfect combination of convenience and lifestyle.

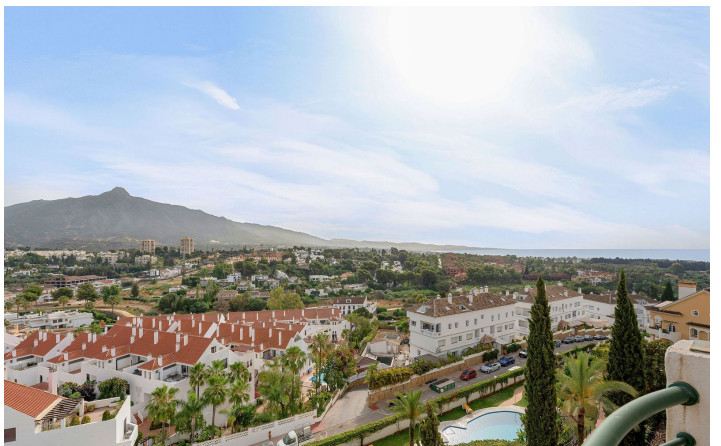
The apartment features bright living areas, two well-appointed bedrooms, and two bathrooms, making it an ideal holiday home, permanent residence, or investment opportunity.

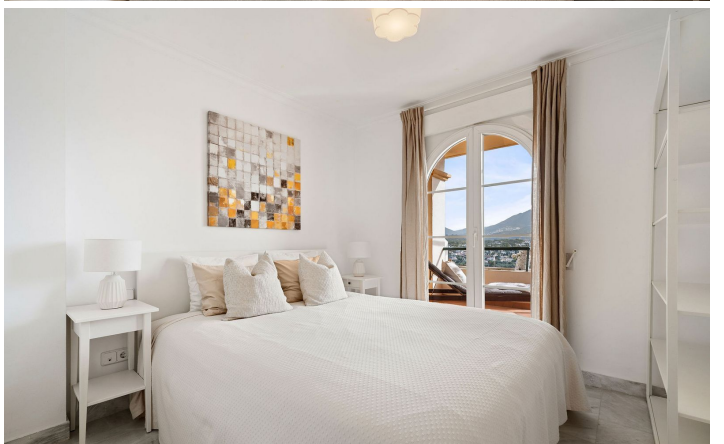
Residents benefit from a well-maintained communal swimming pool, while the property also includes private parking and a secure storage room for added convenience.

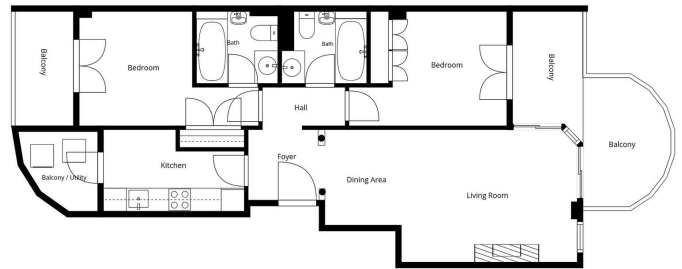
Whether you're looking to relax by the pool, stroll to the beach, or enjoy the vibrant atmosphere of Puerto Banús, this exceptional apartment offers an unbeatable location with spectacular views.

[View Property Online](#)

# GALLERY







ViVi Real Estate | Calle Almendralejo de Jarales 5 Mijas Costa, 29640

Tel: +34 672 816 975

Email: [sales@vivi-realestate.com](mailto:sales@vivi-realestate.com) | Web: [www.vivi-realestate.com](http://www.vivi-realestate.com)