





Middle Floor Apartment in Puerto Banús

Price € 700,000

Bedrooms	3
Bathrooms	2
Build Size	135 m ²
Terrace	58 m ²
Plot Size	193 m ²

SETTING

- ✓ Beachside
- ✓ Close To Port
- ✓ Close To Shops
- ✓ Close To Sea
- ✓ Close To Schools
- ✓ Close To Marina
- ✓ Urbanisation

ORIENTATION

- ✓ South West

CONDITION

- ✓ Excellent

POOL

- ✓ Communal

CLIMATE CONTROL

- ✓ Air Conditioning

VIEWS

- ✓ Garden
- ✓ Pool

FEATURES

- ✓ Covered Terrace
- ✓ Private Terrace

FURNITURE

- ✓ Fully Furnished

KITCHEN

- ✓ Fully Fitted

GARDEN

- ✓ Communal

SECURITY

- ✓ Gated Complex

PARKING

- ✓ Communal

UTILITIES

- ✓ Electricity
- ✓ Drinkable Water

CATEGORY

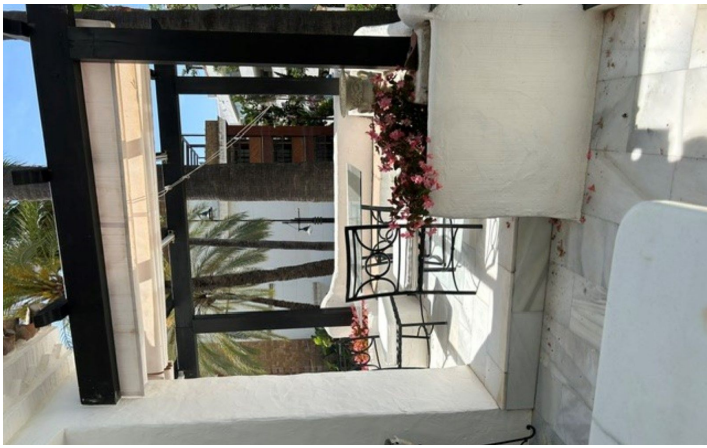
- ✓ Cheap
 - ✓ Investment
 - ✓ Resale
-

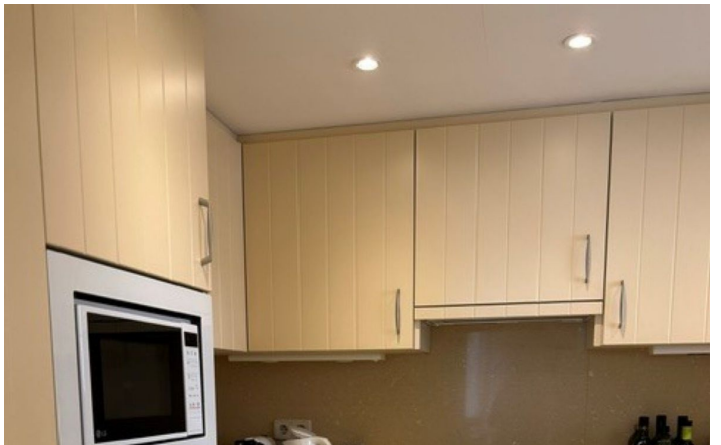
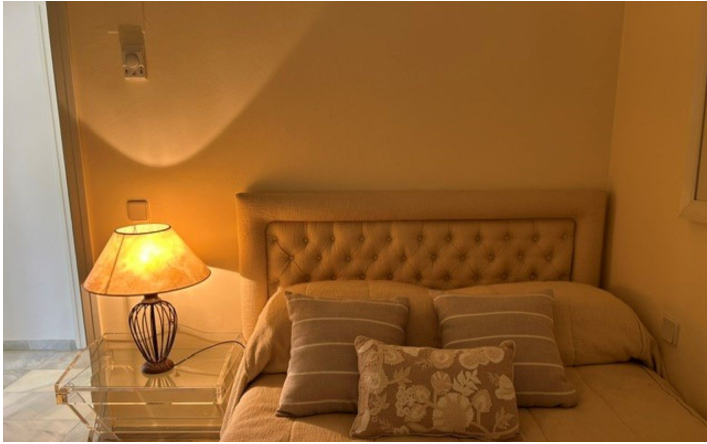
Fabulous 192 m2 apartment on 2nd sea line and walking distance to Puerto Banús in closed urbanization with only 35 apartments. Beautiful gardens and comunal pool. It has a lot of luminosity as is Southwest facing on a 1st floor. Very large lounge/dining area with exit to a large terrace with a small bar, fully fitted kitchen, 3 spacious bedrooms (2 of them with large terraces), 2 bathrooms. Comunal parking.

[View Property Online](#)

GALLERY







Vivi Real Estate | Calle Almendralejo de Jarales 5 Mijas Costa, 29640

Tel: +34 672 816 975

Email: sales@vivi-realestate.com | Web: www.vivi-realestate.com