



WWW.VIVI-REALESTATE.COM
WWW.VIVI-HOMES.COM



APARTAMENTO DE LA PLANTA MEDIA 2 DORMITORIOS 2 BAÑOS IN BENAHAVÍS

📍 Benahavís

REF# V4671397 **425.000 €**

DORM.	BAÑOS	CONS.	TERRACE
2	2	117 m ²	31 m ²

Immaculate 2 bed, 2 bath apartment in the secured urbanisation of Benatalaya! This apartment was built to the highest standards and is still in amazing condition. The property is sold furnished.

When we enter the apartment, we are welcomed in a hall that leads to 2 big bedrooms, both with ensuite bathroom. One of them has a bath and a separate shower. The other one comes with a bath. Large wardrobes in both bedrooms! On the right hand side of the entrance, we enter the living and dining area separated by a double door which allows even more light to come in. This first floor apartment is very bright and spacious, has a huge covered terrace, big enough for a table and 8 chairs on one side and some sunbeds on the other side, and all this with views to the Concha Mountain and the sea! It has a good size kitchen with table and chairs to enjoy breakfast, and a separate laundry area.

The property comes with 2 underground parking places next to each other and a storage, all in the same



WWW.VIVI-REALESTATE.COM
WWW.VIVI-HOMES.COM

block and with direct access to the property.

Last but not least, we find 3 swimming pools all over the urbanisation, and even walking through the mature gardens makes you feel ZEN! Furthermore there is a gym for those who want to work.

Supermarket and a small commercial area (being built) just a few steps away at the end of the street, as well as the Atalaya International School!

There are several 18 holes golf courses in the area, such as Atalaya Golf and Country Club, El Paraiso and Real Club de Golf Guadalmina

What a location!

Contact us for a viewing, we have the keys!

Middle Floor Apartment, Benahavís, Costa del Sol.

2 Bedrooms, 2 Bathrooms, Built 117 m², Terrace 31 m².

Setting : Commercial Area, Close To Shops, Close To Schools, Close To Marina, Urbanisation.

Orientation : East, South East.

Pool : Communal, Indoor, Heated.

Views : Sea, Mountain, Country, Panoramic.

Features : Covered Terrace, Lift, Fitted Wardrobes, Gym, Sauna, Paddle Tennis, Storage Room, Ensuite Bathroom, Jacuzzi, Double Glazing, 24 Hour Reception.

Furniture : Fully Furnished.

Kitchen : Fully Fitted.

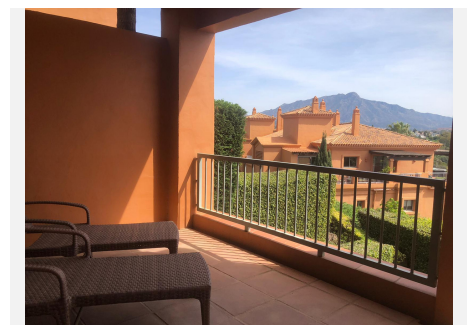
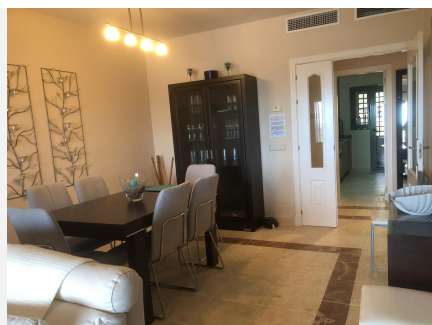
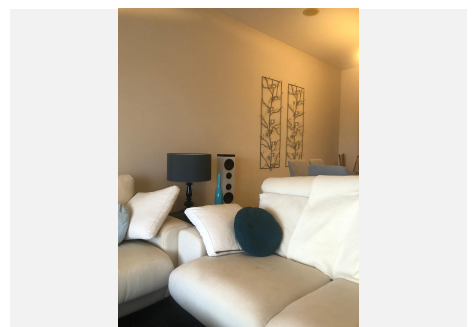
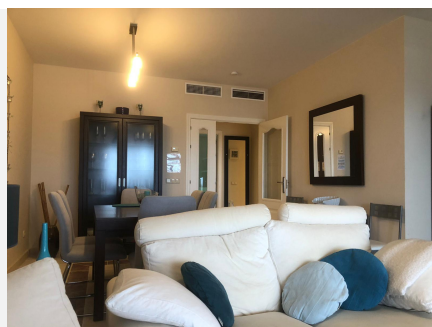
Garden : Communal.

Security : Gated Complex, 24 Hour Security.

Parking : Underground, Garage.

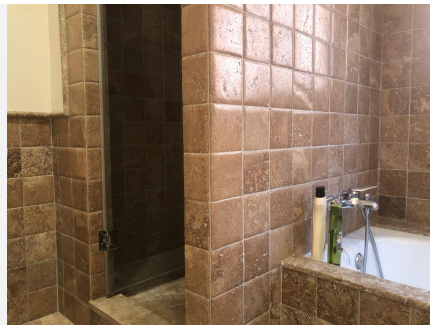
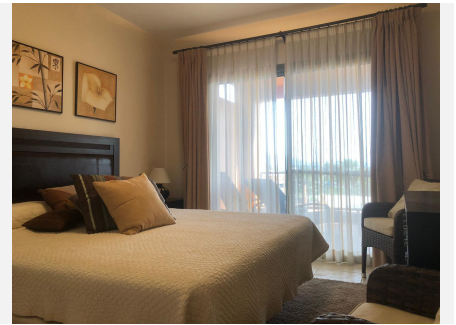
Utilities : Electricity, Drinkable Water, Telephone.

Category : Golf, Luxury.





WWW.VIVI-REALESTATE.COM
WWW.VIVI-HOMES.COM





WWW.VIVI-REALESTATE.COM
WWW.VIVI-HOMES.COM

