



WWW.VIVI-REALESTATE.COM
WWW.VIVI-HOMES.COM



CASA 4 DORMITORIOS 2 BAÑOS IN CASARES

📍 Casares

REF# V4042702 **990.000 €**

DORM.	BAÑOS	CONS.	PARCELA	TERRACE
4	2	220 m ²	30000 m ²	80 m ²

Magnificent finca with pool in Casares, Costa del Sol, 9 km from Estepona, 1 hour drive to Malaga airport and 30 minutes drive to Gibraltar

The beautiful finca with pool of 30.000 m² is located in the nature park in Casares, 8 km from the beach and 10 km from shops.

The 120 m² house, which was completely renovated in 2020, has a total of 3 bedrooms (two of which are on the 1st floor), 2 bathrooms with shower, a large eat-in kitchen with fireplace and access to the terrace and garden, 1 large living room with fireplace, storage room.

The house was completely restored to a high standard in 2020. It has new PVC windows, tiled floor, alarm system.

Next to the house is a small house (casita) of 15 m² in which two more people can sleep comfortably.

The house is surrounded by terraces and a 1000m² fenced garden with fruit trees (orange, lemon, grapefruit) and palm trees.

It is possible to cover the terrace and form a unit between the casita and the main house.

The house is connected to the local electricity and water supply. It is fully equipped with high quality



furniture.

A 2021 paved road leads to the property.

There are 2 wells on the well cultivated terrace area of 30000 m2. The plot is partially fenced. 2 bridges lead over the "arroyo Jordana" stream to the partly forested areas; here are cork oak trees, hazelnut trees, vines. There is also a small tool shed of 5m2.

The house has all the machines for the maintenance and care of the garden.

The wide entrance to the property has space for several cars. There is also a carport.

The 8 x 4 m pool invites you to swim in summer. This has been equipped with a new pool pump.

Features:

Land: 30000 m2

House: 120m2

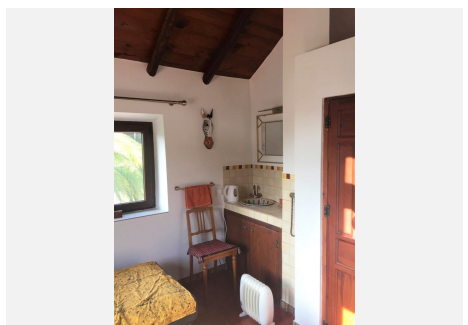
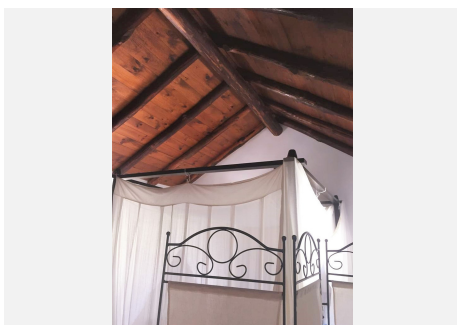
Bedroom: 4th

Bathrooms: 2 shower rooms

Casita: 15 m2

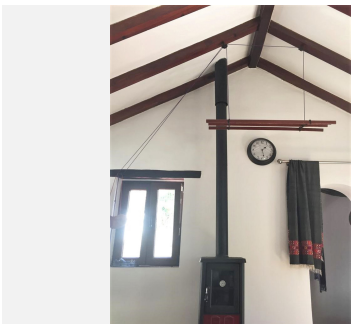
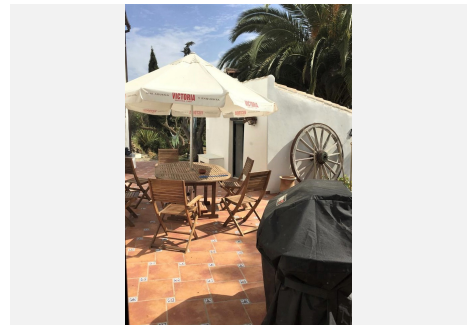
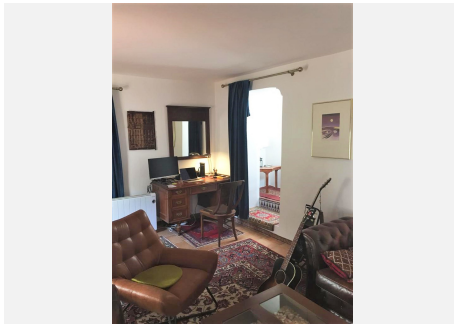
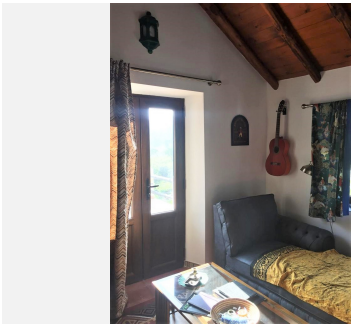
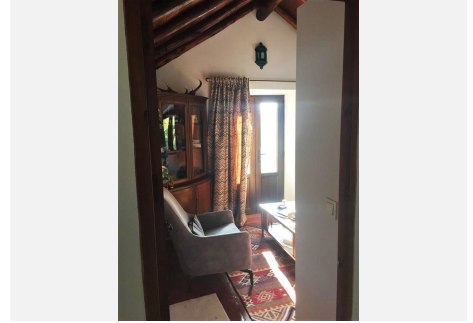
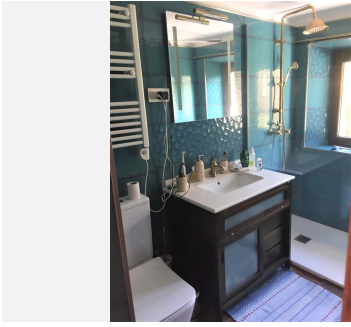
Shed: 5 m2

Terraces: 36m2, 20m2, 20m2





WWW.VIVI-REALESTATE.COM
WWW.VIVI-HOMES.COM





WWW.VIVI-REALESTATE.COM
WWW.VIVI-HOMES.COM

