



WWW.VIVI-REALESTATE.COM
WWW.VIVI-HOMES.COM



CASA 5 DORMITORIOS 5.5 BAÑOS IN SAN PEDRO DE ALCÁNTARA

📍 San Pedro de Alcántara

REF# V4329709 **2.950.000 €**

DORM.	BAÑOS	CONS.	PARCELA	TERRACE
5	5.5	450 m ²	610 m ²	220 m ²

New built modern south facing villa, just 250m from the Mediterranean Sea near San Pedro town. The property is built over three floors plus rooftop terrace with panoramic views to mountains and the sea. Excellent location for holidays and perfect for whole year living – all amenities are nearby, great schools in vicinity and best golf courses are only short drive from home.

New built villas are rare to find in this beachside location – this new built villa represents excellent investment at great price €/m².

Some of the features include solar panels, lightning with Wi-Fi dimmers controllable by mobile phone, preinstallation for electric blinds and thermo glazing on first floor.

Please contact us for more detailed information and viewing requests.



WWW.VIVI-REALESTATE.COM
WWW.VIVI-HOMES.COM





WWW.VIVI-REALESTATE.COM
WWW.VIVI-HOMES.COM



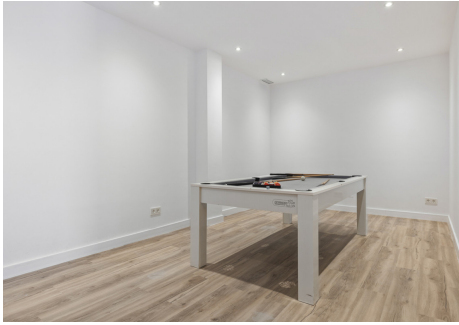


WWW.VIVI-REALESTATE.COM
WWW.VIVI-HOMES.COM



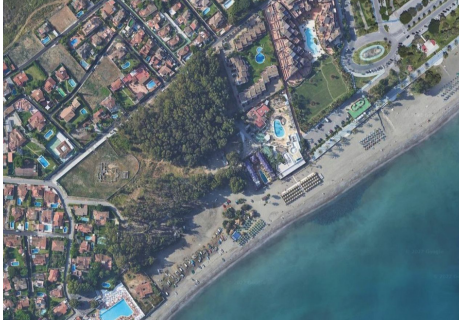


WWW.VIVI-REALESTATE.COM
WWW.VIVI-HOMES.COM





WWW.VIVI-REAL ESTATE.COM
WWW.VIVI-HOMES.COM



GARDEN FLOOR



Garden floor built square meters
Living Area: 238.53 m²
Terrace: 19.51 m²

The render images and drawings included in this brochure are for illustrative purposes only and do not constitute an offer or a contract. The actual project may vary from the information provided in this brochure. The actual project may vary from the information provided in this brochure. The actual project may vary from the information provided in this brochure.



MAIN FLOOR



Main floor built square meters
Living Area: 122.40 m²
Terrace: 124.19 m²

The render images and drawings included in this brochure are for illustrative purposes only and do not constitute an offer or a contract. The actual project may vary from the information provided in this brochure. The actual project may vary from the information provided in this brochure. The actual project may vary from the information provided in this brochure.



FIRST FLOOR



First floor built square meters
Living Area: 89.51 m²
Terrace: 75.61 m²

The render images and drawings included in this brochure are for illustrative purposes only and do not constitute an offer or a contract. The actual project may vary from the information provided in this brochure. The actual project may vary from the information provided in this brochure. The actual project may vary from the information provided in this brochure.

