



WWW.VIVI-REALESTATE.COM
WWW.VIVI-HOMES.COM



CASA 6 DORMITORIOS 6 BAÑOS IN THE GOLDEN MILE

📍 The Golden Mile

REF# V4766305 **6.400.000 €**

DORM.

6

BAÑOS

6

CONS.

647 m²

PARCELA

1441 m²

TERRACE

284 m²

Sophisticated independent villa located in a prestigious urbanization on the Golden Mile – Lomas de Marbella Club. It is one of the most popular luxury residential areas in Marbella, maintaining its elegant and original appearance, with large and perfect green areas, 24-hour security, quality of life and architecture. The urbanization is located 10 minutes from the center of Marbella, 40 km from Malaga.

International Airport, 50 km from the AVE station and 85 km from Gibraltar Airport.

Its location north of the Golden Mile, in front of Puente Romano and near the Royal Mosque with its impressive Andalusian Arab architecture, makes it a privileged area. On the other hand, the urbanization is close to a legendary 5* hotel, Michelin-starred restaurants, numerous golf courses and international schools, Marbella and Puerto Banús. Wide variety of fashion boutiques, restaurants and nightlife.



WWW.VIVI-REALESTATE.COM
WWW.VIVI-HOMES.COM





WWW.VIVI-REALESTATE.COM
WWW.VIVI-HOMES.COM



DETACHED VILLAS

BASEMENT FLOOR

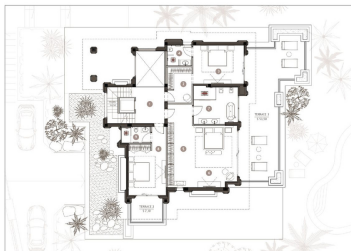
| NAME | BUILT |
|---------------------------|-----------------------------|
| Garage | 24,20 m ² |
| Reception | 3,00 m ² |
| Bedroom 1 | 20,70 m ² |
| Bedroom 2 | 27,20 m ² |
| Bedroom 3 | 23,20 m ² |
| Bedroom 4 | 2,70 m ² |
| Storage | 4,00 m ² |
| Laundry | 12,00 m ² |
| W.C. Bathroom | 1,00 m ² |
| W.C. Living Area/Bathroom | 17,70 m ² |
| W.C. Kitchen | 1,00 m ² |
| W.C. Bedroom | 2,20 m ² |
| W.C. Bedroom 2 | 1,00 m ² |
| W.C. Bedroom 3 | 1,00 m ² |
| W.C. Technical Room | 10,00 m ² |
| BASEMENT FLOOR | 133,80 m² |
| TOTAL HOUSE AREA | 538,00 m² |



DETACHED VILLAS

FIRST FLOOR

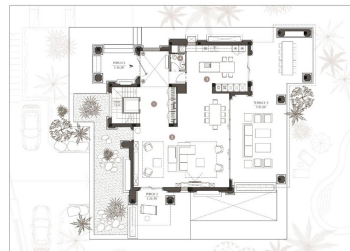
| NAME | BUILT |
|-------------------------|-----------------------------|
| Hallway | 10,10 m ² |
| Living 1 | 12,20 m ² |
| Bedroom 1 | 14,00 m ² |
| Bedroom 2 | 4,20 m ² |
| W.C. Bedroom | 1,00 m ² |
| W.C. Bedroom | 14,20 m ² |
| W.C. Living Area | 12,20 m ² |
| Bedroom 3 | 13,20 m ² |
| Bedroom 4 | 13,20 m ² |
| Bedroom 5 | 4,20 m ² |
| FIRST FLOOR | 133,80 m² |
| TOTAL HOUSE AREA | 538,00 m² |



DETACHED VILLAS

GROUND FLOOR

| NAME | BUILT |
|-------------------------|-----------------------------|
| Hall Corridor | 10,10 m ² |
| Living Area | 12,20 m ² |
| W.C. Living | 1,00 m ² |
| W.C. Living | 2,20 m ² |
| GROUND FLOOR | 133,80 m² |
| TOTAL HOUSE AREA | 538,00 m² |



DETACHED VILLAS

ROOF TERRACE

| NAME | BUILT |
|-------------------------|-----------------------------|
| Roof | 4,10 m ² |
| W.C. | 12,00 m ² |
| W.C. | 1,70 m ² |
| ROOF TERRACE | 17,80 m² |
| TOTAL HOUSE AREA | 538,00 m² |

