



WWW.VIVI-REALESTATE.COM
WWW.VIVI-HOMES.COM



APARTAMENTO DE LA PLANTA MEDIA 3 DORMITORIOS 2 BAÑOS IN ESTEPONA

📍 Estepona

REF# V4784689 **820.000 €**

DORM.	BAÑOS	CONS.	TERRACE
3	2	189 m ²	55 m ²

Modern luxury apartment in an exclusive residential community in the New Golden Mile. With a spacious South-West facing terrace with an abundance of natural light and panoramic views of the golf course and the mountains.

The reception hall leads to an open living area with elegant sliding doors that completely integrate the interiors with the spacious corner terrace. The sliding doors are step-free and floor-to-ceiling in height.

The contemporary kitchen is fully-equipped and has an elegant island and an adjacent laundry room. The terraces have covered areas for outdoor dining and relaxing, as well as electric awnings.

This modern luxury apartment, has three bedrooms and two bathrooms. Each bedroom features large windows overlooking the gardens and built-in wardrobes. The master bedroom includes an ensuite

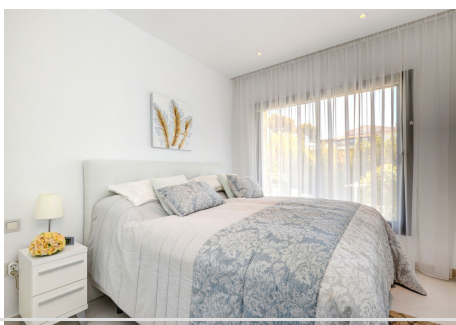
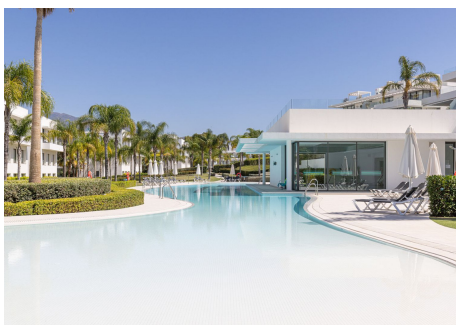
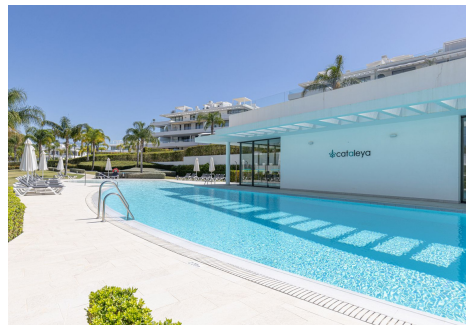


bathroom with upscale fixtures and a walk-in shower. The apartment also offers two private parking spaces in the underground garage and a spacious storage room.

The urbanisation is the epitome of luxury in the area, with this apartment situated in the highly exclusive phase 2. The community features expansive gardens with mature palm trees, a large central swimming pool with a gradual beach-style entry, and a covered pool that is heated year-round.

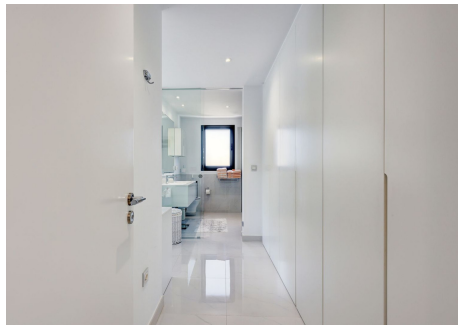
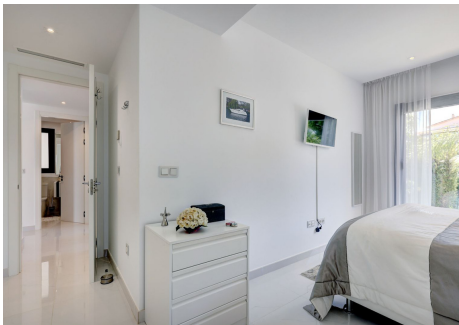
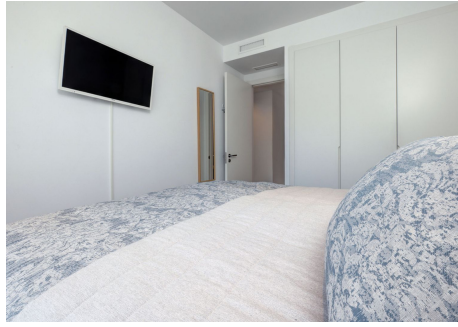
Nestled in a serene residential area between the Atalaya and El Paraiso golf courses, the location provides easy access to numerous beaches, international schools, and various amenities. Puerto Banus and Estepona are just a 15-minute drive away.

Don't miss out on the opportunity to live in the house of your dreams!"





WWW.VIVI-REALESTATE.COM
WWW.VIVI-HOMES.COM





WWW.VIVI-REALESTATE.COM
WWW.VIVI-HOMES.COM





WWW.VIVI-REALESTATE.COM
WWW.VIVI-HOMES.COM

