



WWW.VIVI-REALESTATE.COM
WWW.VIVI-HOMES.COM



PISO PLANTA BAJA 2 DORMITORIOS 2.5 BAÑOS IN NEW GOLDEN MILE

📍 New Golden Mile

REF# V4791472 **425.000 €**

DORM.

2

BAÑOS

2.5

CONS.

174 m²

Frontline Golf apartment in Atalaya.

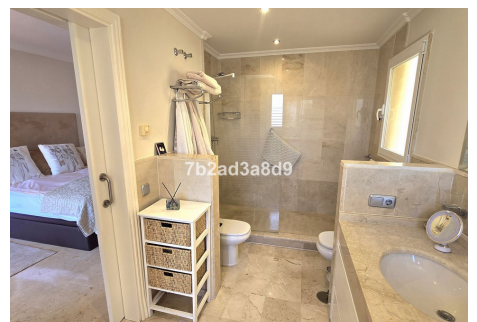
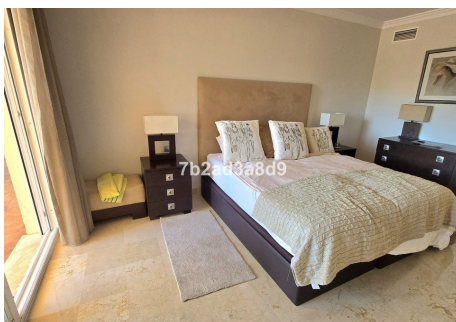
Located in a gated community with 24hrs security, the gardens are well maintained and it has both outdoor and indoor pools, Gym, Jacuzzi and tennis court.

By car, it is just less than 5 minutes to the beach, 7 minutes to Puerto Banus, 15 minutes to both Marbella and Estepona towns.

This is a spacious south facing elevated ground floor apartment in immaculate condition. It consists of 2 bedrooms en-suite, 1 guest toilet, fully fitted kitchen, good size living-dining room with direct access to the large covered terrace with good frontline golf views. The master bedroom en suite as a walking wardrobe and also with direct access to the terrace with golf views.



A garage space and storage room are both included in the sale.





WWW.VIVI-REALESTATE.COM
WWW.VIVI-HOMES.COM

