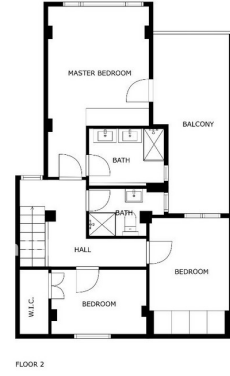




WWW.VIVI-REALESTATE.COM
WWW.VIVI-HOMES.COM



APARTAMENTO DE LA PLANTA MEDIA 3 DORMITORIOS 2 BAÑOS IN NUEVA ANDALUCÍA

📍 Nueva Andalucía

REF# V4728418 **530.000 €**

DORM.

3

BAÑOS

2

CONS.

239 m²

PARCELA

100 m²

A rare to the market corner apartment conveniently located in Nueva Andalucia, close to the famous Puerto Banus marina with its signature shops and famous restaurants. Central to all amenities, walking distance to several golf courses, and just a very short drive to Marbella.

This bright and cosy corner apartment has east orientation and simply stunning views towards the iconic La Concha mountain. The community is very well established and is fully gated, with entrances from two different streets.

The apartment is well distributed over two floors, the entrance leads from the terrace into the open plan living room and ample kitchen area. There is a guest WC and outside patio area on the first level, with potential to create another terrace. Upstairs there are three bedrooms, the master bedroom is ensuite, has built-in wardrobes and spectacular views towards the mountain and over the community area. There is an

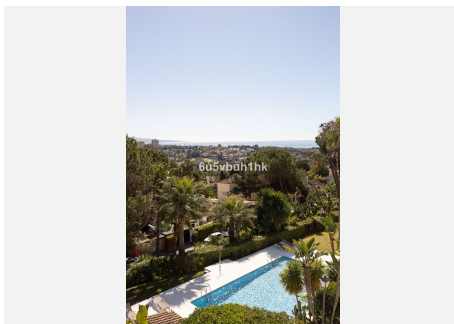
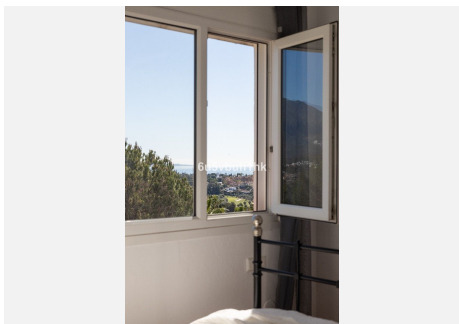
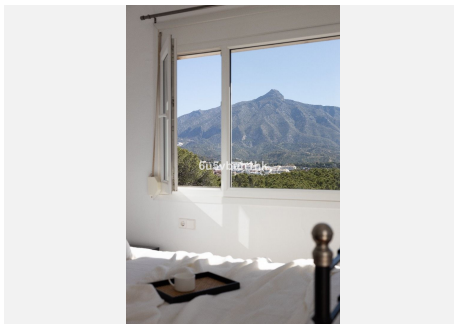
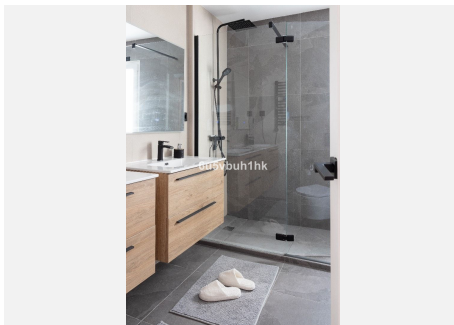
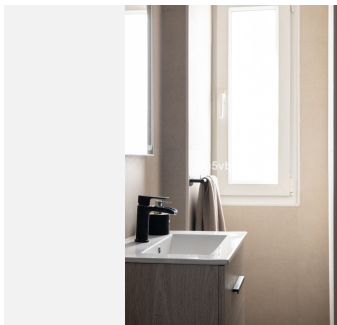
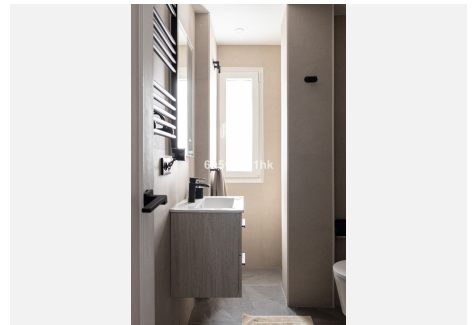
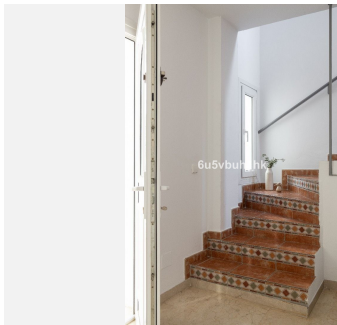


ample roof terrace which is perfect for outside relaxing and enjoying the panoramic sea and mountain view.

The community gardens are mature colourful and the pool area is beautifully maintained.

This could be a good reform project, with so much potential.

A super opportunity to buy a conveniently located residence, in a sought after complex, so close to everything, it would make the perfect holiday home or investment with a high rental return. It has a tourist licence and rents out well. These iconic views need to be seen! Call now for viewings!





WWW.VIVI-REALESTATE.COM
WWW.VIVI-HOMES.COM

