



WWW.VIVI-REALESTATE.COM
WWW.VIVI-HOMES.COM



MAISON 6 BEDROOMS 6.5 BATHROOMS IN BENAHAVÍS

📍 Benahavís

REF# V4782388 **2.900.000 €**

BEDS	BATHS	BUILT	PLOT	TERRACE
6	6.5	471 m ²	3250 m ²	160 m ²

Luxurious Sanctuary in Marbella

Nestled above our vibrant botanical gardens, the majestic Sierra de las Nieves mountains embrace our idyllic haven. This natural wonder shapes a unique microclimate in Marbella and Benahavís, offering over 320 sun-drenched days annually, making it one of Europe's sunniest destinations.

Exclusive Location

Marbella Club Hills, located in Benahavís, lies between the iconic Marbella Club Golf Resort and Anantara Villa Padierna Palace. Spanning an expansive 158,000 sqm, with only 5% dedicated to construction, this exclusive community preserves the pristine environment and offers residents breathtaking views.

Exquisite Villa

Bedrooms: 6



WWW.VIVI-REALESTATE.COM
WWW.VIVI-HOMES.COM

Bathrooms: 6.5
Built Area: 471 m²
Terrace: 160 m²
Garden/Plot: 3250 m²

This frontline golf villa is positioned close to golf courses and urban amenities, oriented to the south, and in excellent condition.

Luxury Features

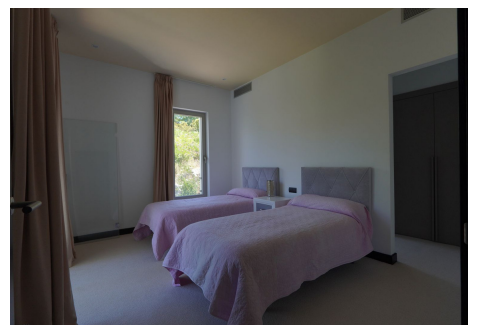
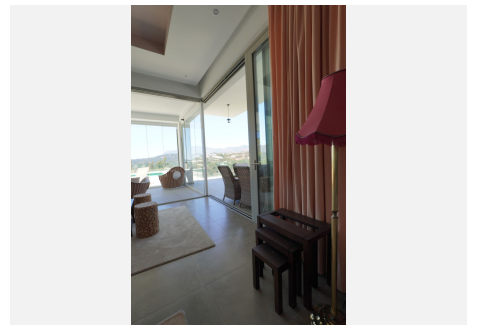
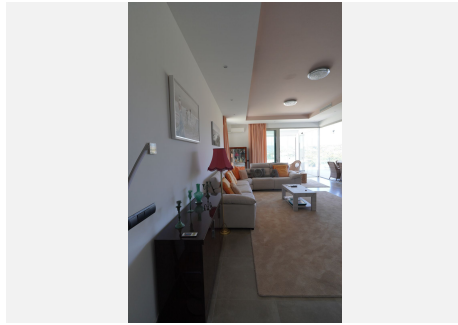
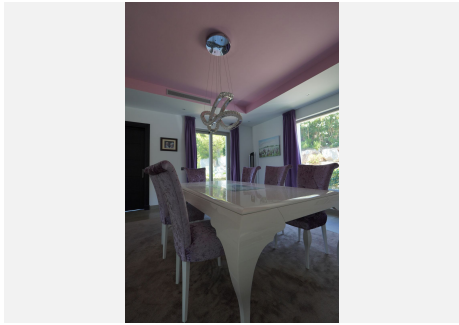
Private pool
Air Conditioning (Hot/Cold)
Fireplace
Stunning Views: Mountain, Golf, Panoramic, Garden, Pool
Covered Terrace
Fitted Wardrobes
Private Terrace
Utility Room
Ensuite Bathrooms
Marble Flooring
Double Glazing
Fully Fitted Kitchen
Private Garden
24 Hour Security
Private Garage

A short drive away from the vibrant Puerto Banús and Marbella, this property offers the perfect blend of luxury, comfort, and convenience.





WWW.VIVI-REALESTATE.COM
WWW.VIVI-HOMES.COM





WWW.VIVI-REALESTATE.COM
WWW.VIVI-HOMES.COM





WWW.VIVI-REALESTATE.COM
WWW.VIVI-HOMES.COM

