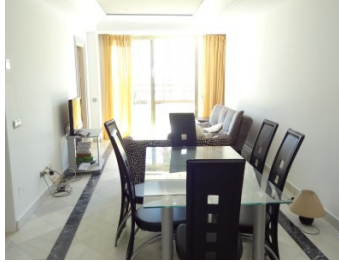




WWW.VIVI-REALESTATE.COM
WWW.VIVI-HOMES.COM



APPARTEMENT AU REZ-DE-CHAUSSÉE 6 BEDROOMS 6 BATHROOMS IN PUERTO BANÚS

📍 Puerto Banús

REF# V2768600 **4.200.000 €**

BEDS

6

BATHS

6

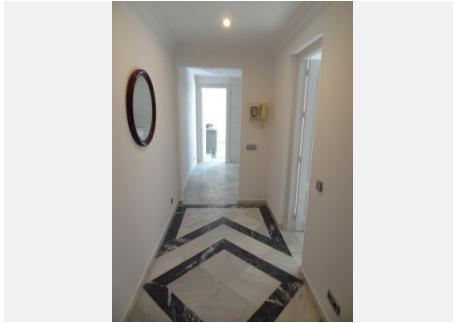
BUILT

663 m²

This unique large beachfront garden duplex occupies the front line to the beach only steps away from a private gate onto the promenade in Puerto Banus. The unique property has been sub-divided into 4 separate apartments sharing a common private entry foyer to ideally suit a large extended family or group of friends buying together, or as a rental investment. Each of the apartments has its own title deed, allowing a buyer re-sell any of the properties. Options exit to re-combine the upper or lower 2 apartments, or the entire duplex. Located right on the beachfront in central Puerto Banus, there are two apartments on the ground floor with direct garden access, and two on the first floor with private terraces. All four apartments offer wonderful sea views right on the beachfront, and have their own small kitchens and lounges. There are 2 x 2 bed apartments (145m² each) + 2 x 1 bed apartments (130 m² each) each with their own entrances. 3 underground parking spaces included. The complex also offers a large communal swimming pool and direct beach access. A unique set-up right on the beachfront in Puerto Banus.



WWW.VIVI-REALESTATE.COM
WWW.VIVI-HOMES.COM





WWW.VIVI-REALESTATE.COM
WWW.VIVI-HOMES.COM

