



WWW.VIVI-REALESTATE.COM
WWW.VIVI-HOMES.COM



APPARTEMENT AU REZ-DE-CHAUSSÉE 3 BEDROOMS 2 BATHROOMS IN NUEVA ANDALUCÍA

📍 Nueva Andalucía

REF# V4782628 **850.000 €**

BEDS

3

BATHS

2

BUILT

113 m²

TERRACE

49 m²

Welcome to this recently completed and Key Ready apartment in Marbella which awaits its first residents.

Perfectly situated on an elevated ground floor, this 3-bedroom, 2-bathroom apartment offers unparalleled views of the sea, mountains, and a serene lake and comes complete with an underground parking space and a spacious storage room.

Perched on a charming hill, this development presents breathtaking panoramas of the Viejo del Angel water reservoir, the sparkling Marbella coastline, and renowned golf courses such as Los Naranjos, Las Brisas, and Aloha. Located in the prestigious La Cerquilla neighbourhood of Nueva Andalucia, the area is celebrated for its peaceful streets, elegant ambiance, and upscale homes.

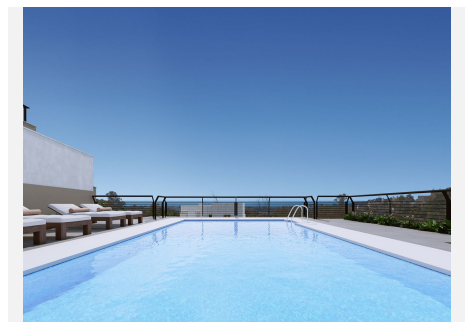
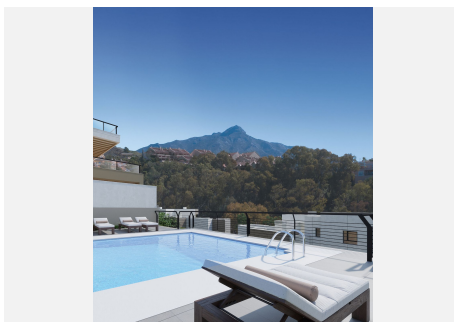
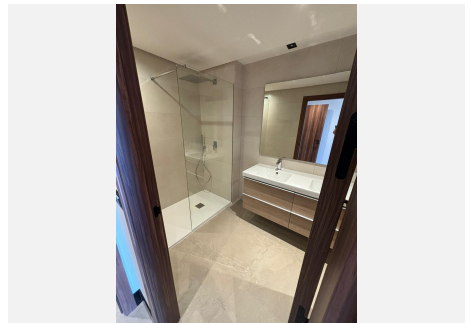
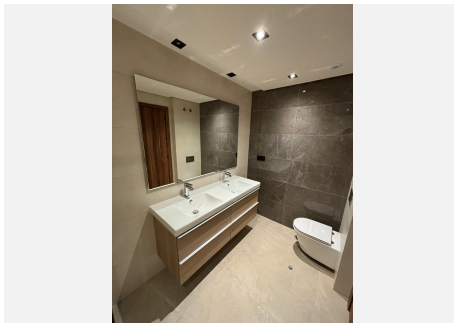
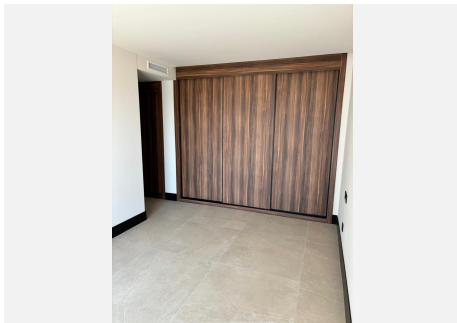
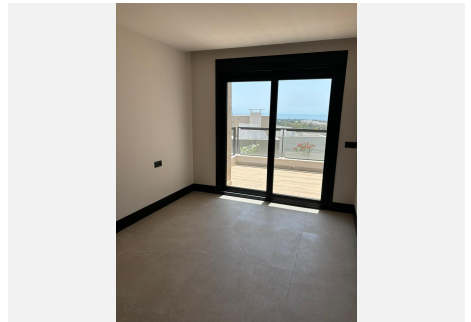
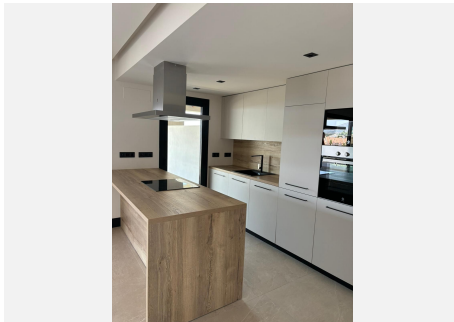
The communal spaces are thoughtfully designed with a fusion of “Boho Chic” and “Country Chic” styles,



utilising natural materials and earthy tones to blend seamlessly with the pool area and surrounding landscape, creating a peaceful and inviting atmosphere.

Positioned between Marbella and San Pedro Alcantara in the heart of Golf Valley, this prime location is a mere 5 kilometres from the vibrant Puerto Banus. The area boasts a diverse range of dining options, from global cuisines to traditional Spanish fare, alongside numerous shops and essential services. Additionally, Malaga airport is less than an hour's drive away, offering convenient travel access.

Ask us for a video of the property!





WWW.VIVI-REALESTATE.COM
WWW.VIVI-HOMES.COM



MARBELLA LAKE

Dormitorio / Bed		Baño / Bath
3	2	

Plantas / Floor	Paredes / Wall	Garaje / Parking	Trastero / Storage
5	1	105	11

Covered / Deck Area: 133,05 m²
Terrace / Terrace Area: 49,00 m²
Pool / Pool Area: 19,99 m²
Combinada / Total Area: 102,48 m²

Covered Area: 156,46 m²

Parcela / Plot: 218,05

Taylor Wimpey