



WWW.VIVI-REALESTATE.COM
WWW.VIVI-HOMES.COM



MAISON 4 BEDROOMS 4 BATHROOMS IN TORREMUELLE

📍 Torremuelle

REF# V4783789 **1.800.000 €**

BEDS	BATHS	BUILT	PLOT	TERRACE
4	4	399 m ²	1720 m ²	100 m ²

Magnificent villa near the beach in Torremuelle in Benalmádena. Incredible views of the sea, sun from morning till evening. Large garden plot of 1644 m² with a separate garage for two cars in addition to the main building and also a guest room and toilet in the garage building. In addition, there is a cute wine cellar / bodega at the back of the yard and a sauna next to the barbecue area.

The upstairs terrace has a hot tub that is sure to offer some of the finest views of the coast. The infinity swimming pool invites you to cool off on hot summer days and thanks to the opening glass wall, the lounge area facing the pool is the perfect combination of interior space and a covered terrace.

The kitchen has space for several chefs and in this villa billiards is not played in the basement as in most villas, but the billiard room is connected to the other lounges and offers a lovely view of the sea. The upstairs living room is straight out of the dream home catalogue with its high ceilings and stunning scenery.



WWW.VIVI-REALESTATE.COM
WWW.VIVI-HOMES.COM

The master bedroom is in its own privacy upstairs with its own walk-in closet and bathroom. The other two bedrooms in the main house are downstairs with their own bathrooms.

The open patio in the middle of the main building exudes an old-fashioned Spanish atmosphere and invites you to enjoy Andalusia's lovely climate.

Living comfort is enhanced by solar panels that keep the electricity bill low. In addition, the fireplace brings a much-needed warm atmosphere on the rare rainy days of winter.

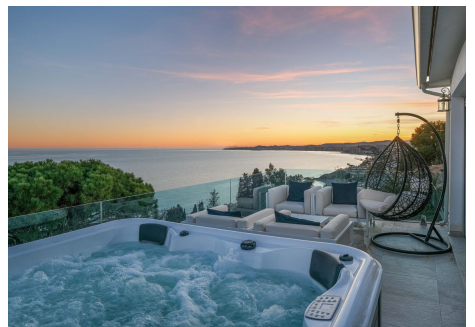
Distances: Beach 350 m. Nearest restaurants, cafes, supermarket 900 m. British College 900 m. Torremuelle train station 1.3 km. Benalmadena pueblo 2 km. Malaga Airport 17 km.

Feel free to come and explore this unique villa on site, book your private showcase time and we will guide you through all the details of this property.



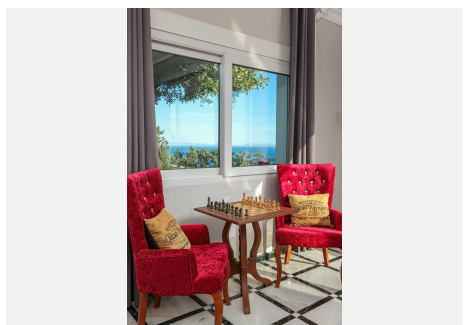
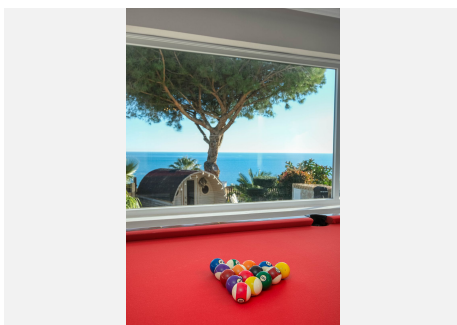
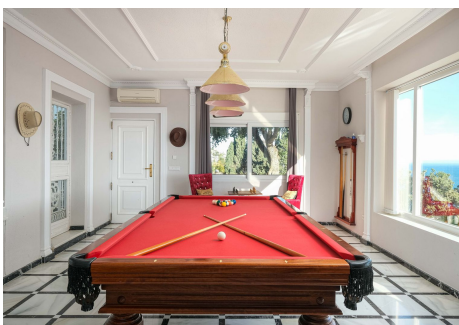
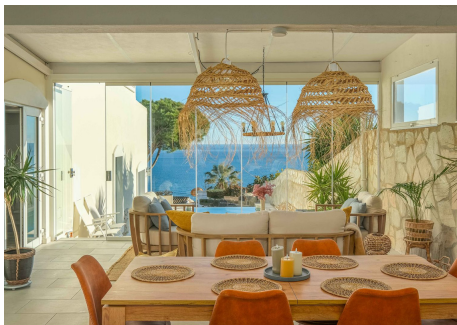


WWW.VIVI-REALESTATE.COM
WWW.VIVI-HOMES.COM



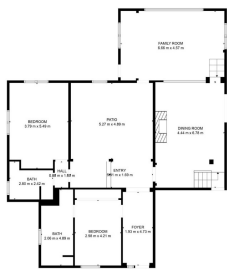
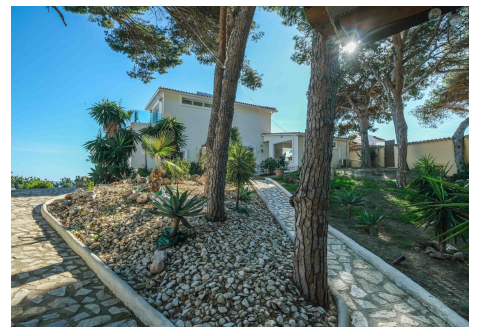
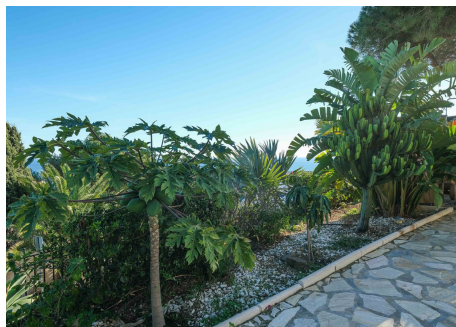
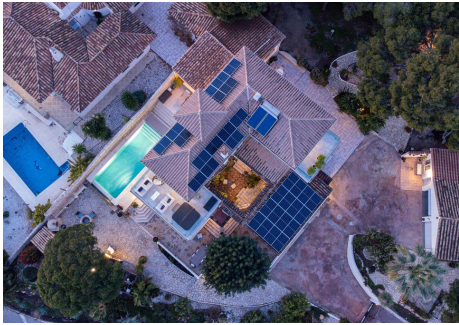


WWW.VIVI-REALESTATE.COM
WWW.VIVI-HOMES.COM

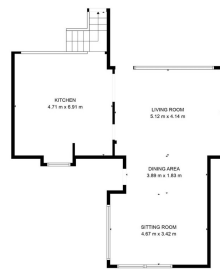




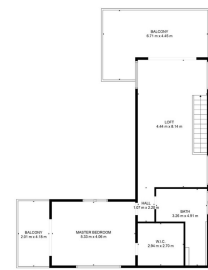
WWW.VIVI-REALESTATE.COM
WWW.VIVI-HOMES.COM



TOTAL 285 M²
FLOOR 1: 170 M² TERRACE: 20 M² BALCONY: 20 M²
REGULATED MARKET: 2019/11/14, BALCONY: 2019/10



TOTAL 285 M²
FLOOR 1: 170 M² TERRACE: 20 M² BALCONY: 20 M²
REGULATED MARKET: 2019/11/14, BALCONY: 2019/10



TOTAL 285 M²
FLOOR 2: 115 M² TERRACE: 10 M² BALCONY: 20 M²
REGULATED MARKET: 2019/11/14, BALCONY: 2019/10