



WWW.VIVI-REALESTATE.COM
WWW.VIVI-HOMES.COM



APPARTEMENT À L'ÉTAGE INTERMÉDIAIRE 2 BEDROOMS 2 BATHROOMS IN MARBELLA

📍 Marbella

REF# V4721467 **595.000 €**

BEDS

2

BATHS

2

BUILT

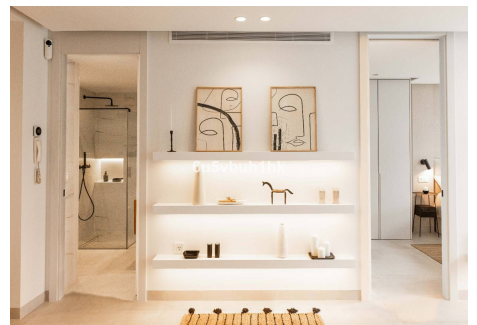
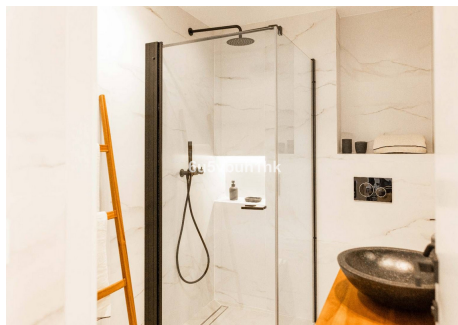
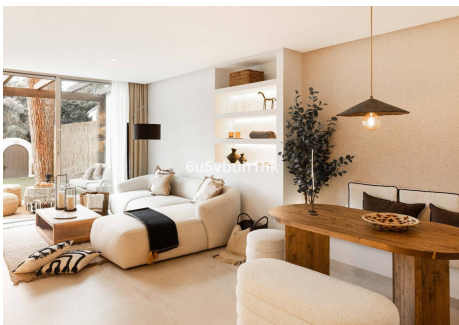
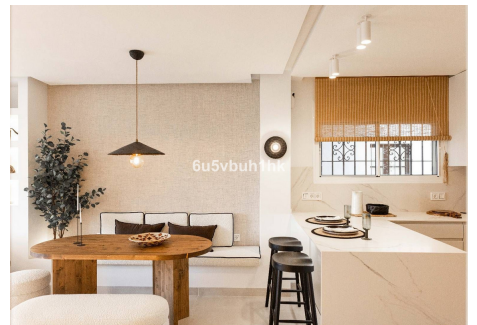
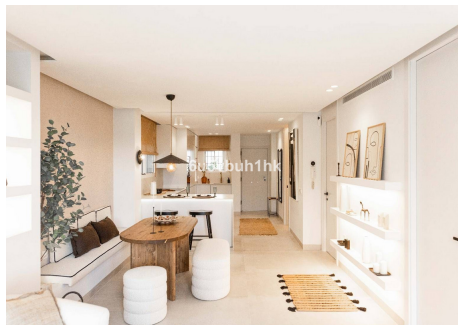
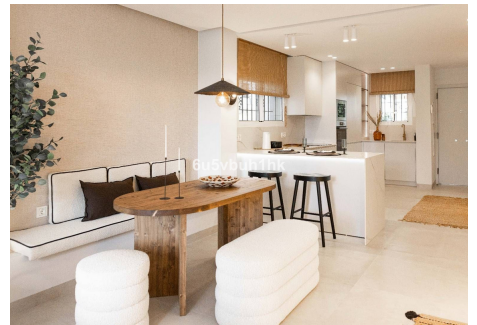
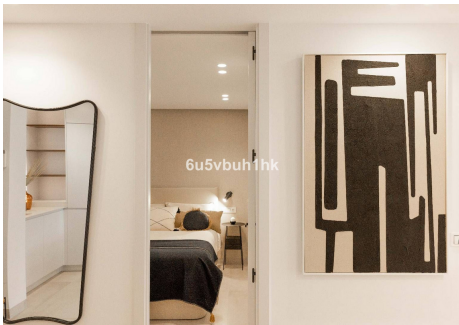
160 m²

We present this fantastic property in one of the most sought-after areas of Nueva Andalucía. Apartment on the ground floor but elevated with respect to street level, recently renovated with top quality construction materials, home automation and detailed furniture. It consists of a large living room with an integrated American kitchen, two equipped bedrooms with built-in wardrobes, one of them with an en-suite bathroom. Highlight its outdoor terrace along with a large private garden with direct access from the street. In the main entrance we have a porch and a small storage room. Builder's warranty. Quality memories: Comprehensive 100x100 renovation with guarantee of the work of the construction company Peñalver Builder. -Large format porcelain flooring



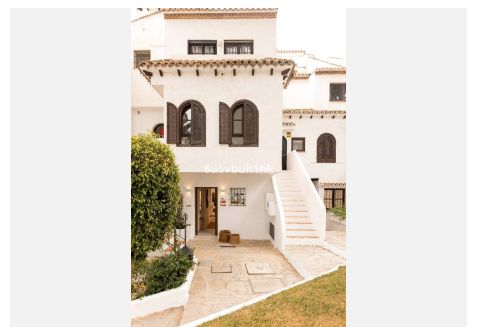
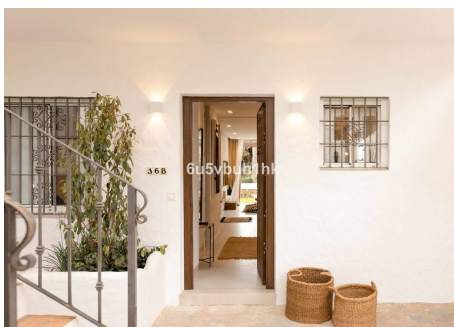
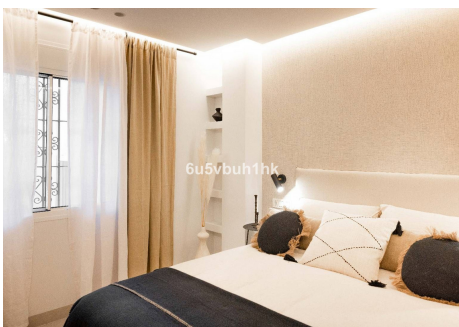
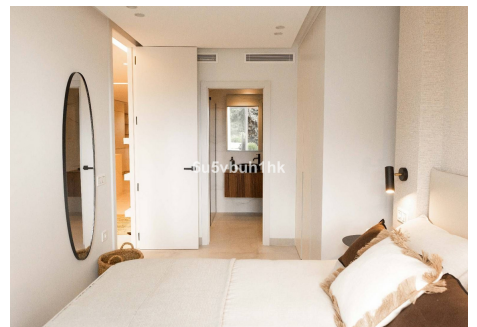
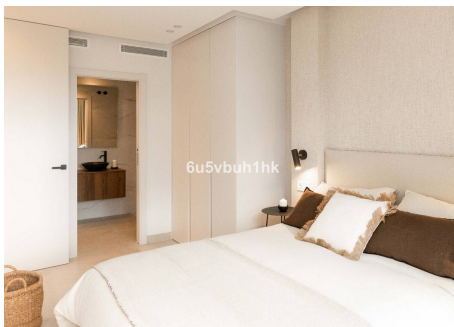
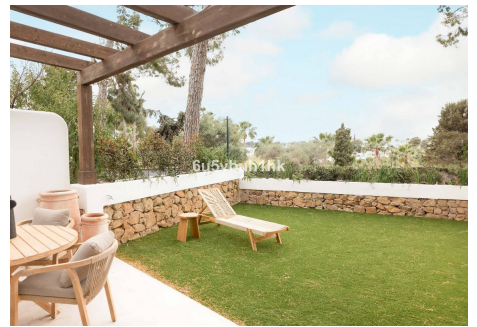
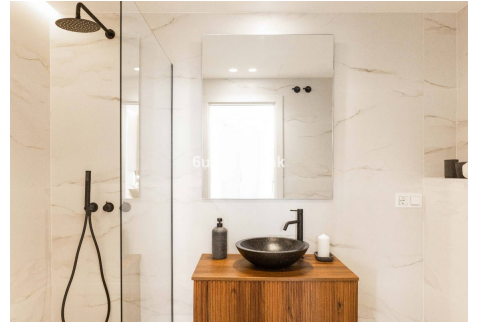
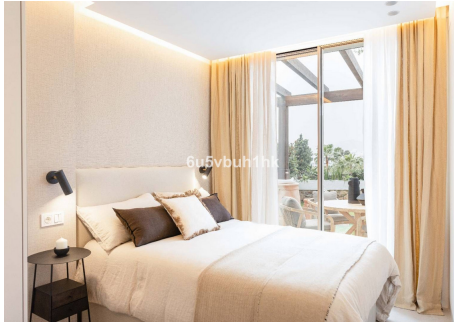
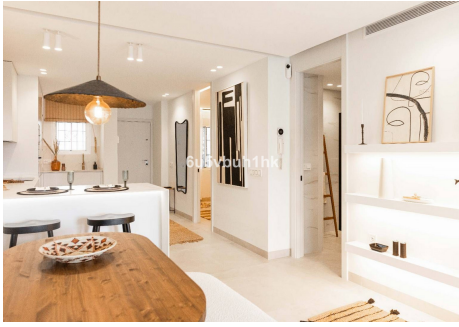
WWW.VIVI-REALESTATE.COM
WWW.VIVI-HOMES.COM

- Lacquered doors from floor to ceiling with magnetic lock, anti-noise rubbers
- Lacquered floor-to-ceiling cabinets with LED interiors
- Built-in shower taps
- Bosh appliances
- Bosh washing machine
- Porcelain kitchen countertop with sink included
- daikin air conditioning
- Cortizo aluminum
- Laminated safety glass with
- Automatic blinds
- Application to control lights, blinds, air conditioning, etc. by mobile phone
- Waterproofed planters with irrigation and own programming
- Security camera
- Alarm
- Outside goalkeeper
- Canapes on beds to store
- Indirect perimeter LED lighting in living room, bedrooms and bathrooms
- Geberit Sanitary
- LG Oled Television





WWW.VIVI-REALESTATE.COM
WWW.VIVI-HOMES.COM





WWW.VIVI-REALESTATE.COM
WWW.VIVI-HOMES.COM

