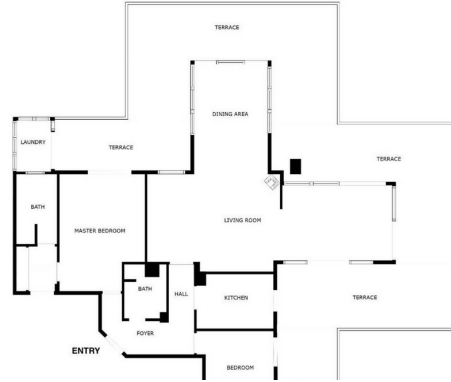




WWW.VIVI-REALESTATE.COM  
WWW.VIVI-HOMES.COM



## PENTHOUSE 2 BEDROOMS 2 BATHROOMS IN BENALMADENA COSTA

📍 Benalmadena Costa

REF# V4777045 **650.000 €**

BEDS

2

BATHS

2

BUILT

135 m<sup>2</sup>

TERRACE

137 m<sup>2</sup>

Welcome to your dream home in the prestigious area of Higueron! This exquisite 2-bedroom penthouse offers unparalleled luxury and comfort with breathtaking sea views and a host of modern amenities.

The Reserva del Higuerón Housing Estate is an idyllic place offering the best views, an architectural style that adapts to the land's natural features and a wide variety of services. The entire area is granted safety, exclusiveness and wellbeing, as well as the satisfaction of the highest demands with every development.

Key Features:

Prime Location: Situated in the sought after area of Higueron, you are conveniently close to high-end restaurants, well equipped fitness center, tennis court and top-rated schools and the Higueron 5 stars hotel

Enjoy unparalleled privacy in the community's highest penthouse, offering complete peace with no



neighbouring units overlooking your space.

**Panoramic Sea Views:** Revel in the serene and picturesque sea views right from your home, providing a constant reminder of the beauty that surrounds you.

**Tropical Gardens:** The complex features beautifully landscaped tropical gardens and 2 pools, offering a peaceful and lush environment to unwind and enjoy nature.

**Modern Amenities:** Benefit from the exclusive amenities within the complex, including 2 swimming pools, spa, tennis courts, and a well-equipped fitness center.

**Additional Features:**

Fireplace

Two spacious bedrooms with direct access to the terrace

EASY Possibility of converting it into a 3 bedroom

5 electric awnings

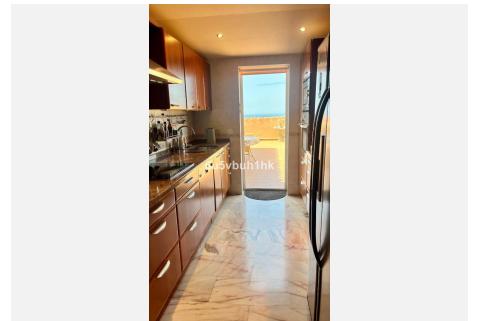
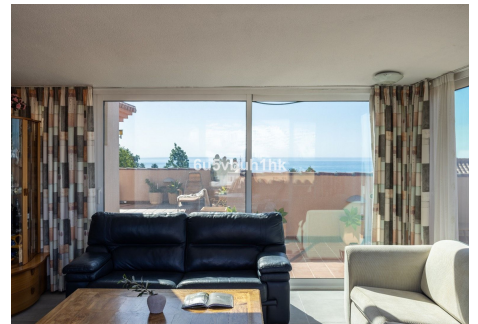
Higuerón bus that takes you to the beach in Carvajal and shopping area including restaurants, pharmacy and Carrefour supermarket

Laundry room

Secure underground parking and storage room.

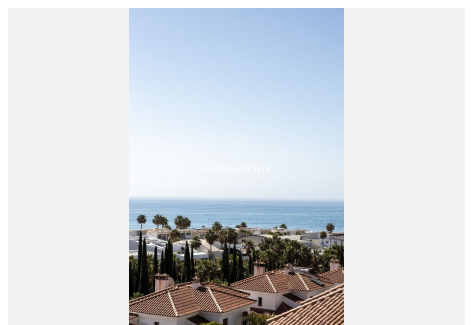
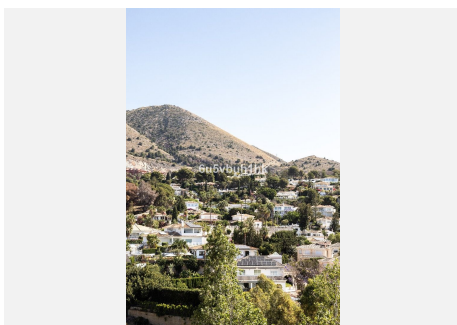
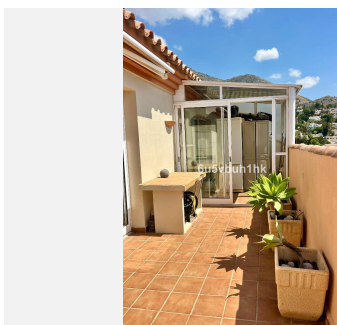
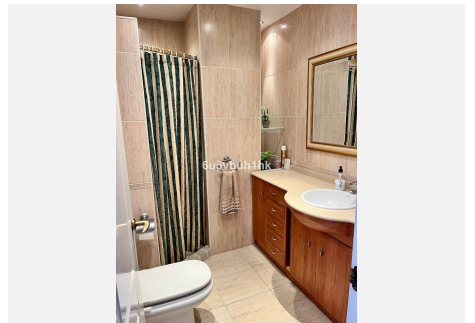
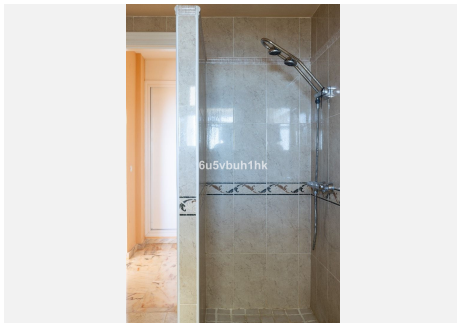
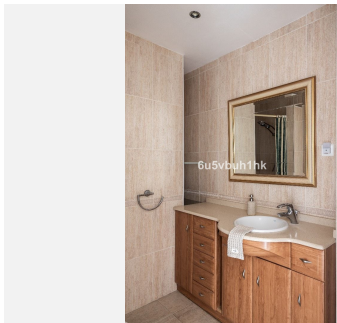
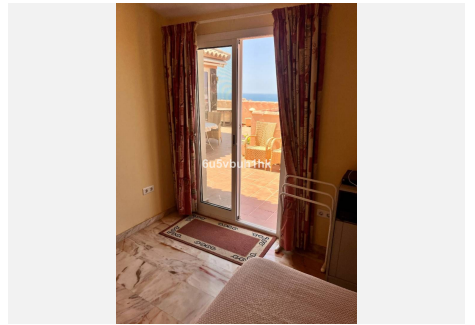
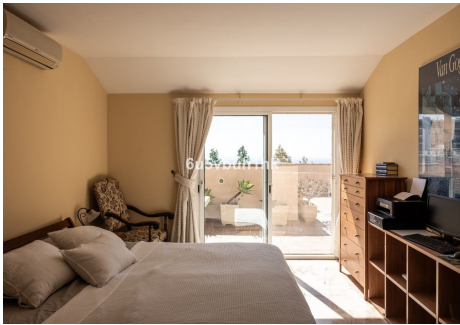
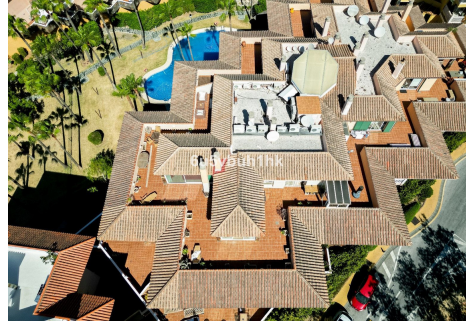
Only 20 minutes away from the airport!

135m2 Built + 138m2 Terrace





WWW.VIVI-REALESTATE.COM  
WWW.VIVI-HOMES.COM





WWW.VIVI-REALESTATE.COM  
WWW.VIVI-HOMES.COM

