



Ground Floor Apartment in Nueva Andalucía

Price € 655,000

Bedrooms	3
Bathrooms	2
Build Size	108 m²
Terrace	21 m²
Plot Size	161 m²

SETTING

- ✓ Town
- ✓ Close To Port
- ✓ Close To Town
- ✓ Urbanisation
- ✓ Commercial Area
- ✓ Close To Shops
- ✓ Close To Schools
- ✓ Close To Golf
- ✓ Close To Sea
- ✓ Close To Marina

ORIENTATION

- ✓ South

CONDITION

- ✓ Excellent

POOL

- ✓ Communal

CLIMATE CONTROL

- ✓ Air Conditioning
- ✓ Hot A/C
- ✓ Cold A/C

VIEWS

- ✓ Garden

FEATURES

- ✓ Covered Terrace
- ✓ Private Terrace
- ✓ Lift
- ✓ Storage Room
- ✓ Near Transport
- ✓ Double Glazing

KITCHEN

- ✓ Fully Fitted

GARDEN

- ✓ Private

SECURITY

- ✓ Gated Complex
- ✓ Alarm System

PARKING

- ✓ Underground

CATEGORY

✓ Investment

✓ Resale

Luxury apartment for sale in Hacienda El Palmeral, an exclusive gated complex of elegant apartments

Residents will enjoy beautifully landscaped communal gardens, with two large swimming pools and a dedicated children's pool.

This community is ideally located in the quiet and prestigious area of Atalaya de Río Verde in Nueva Andalucía. Within walking distance of all amenities, including two tennis clubs, the lively Aloha Strip, Supercor supermarket and a varied selection of bars, restaurants and gourmet restaurants and clubs.

The beach and Puerto Banus harbour are just a few minutes' walk away. It is also a few minutes' walk from the popular Centro Plaza shopping centre and a large Mercadona supermarket.

The area is renowned for its proximity to Puerto Banús and is in the heart of Marbella's Golf Valley, home to some of the best golf courses on the Costa del Sol, including Las Brisas Golf, Los Naranjos Golf, Magna Marbella Golf, Aloha Golf and Dama de Noche Banús Golf.

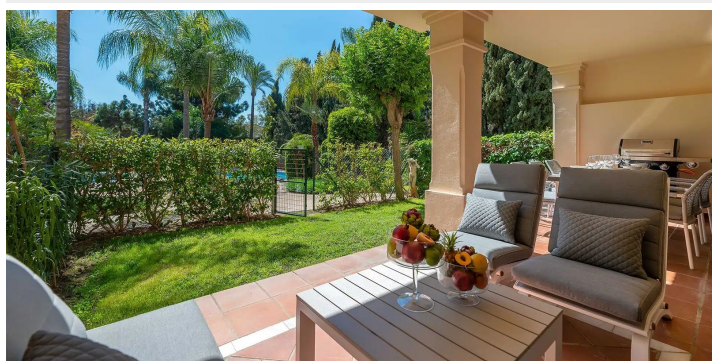
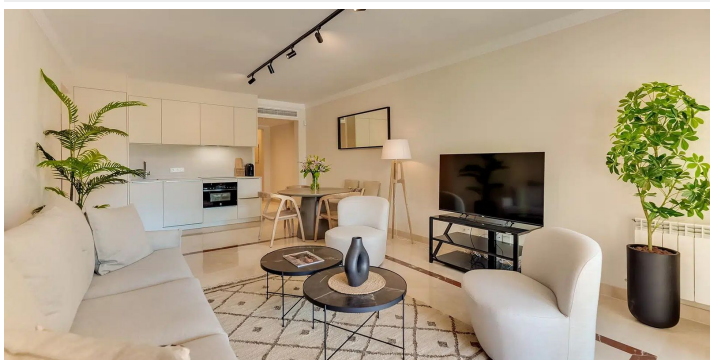
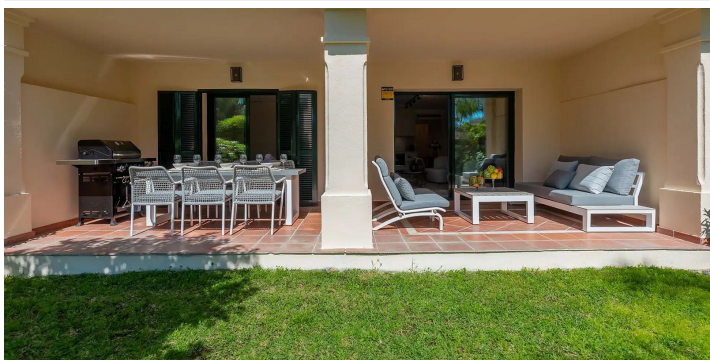
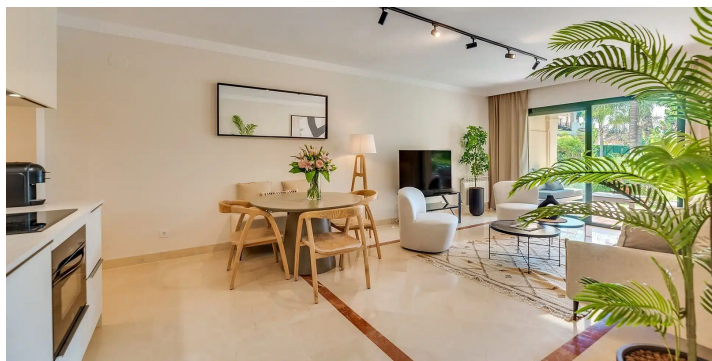
This beautifully renovated and spacious 3 bedroom, 2 bathroom apartment with garage parking is located in the sought after area of Nueva Andalucía. A perfect blend of luxury, comfort and a prime location, ideal for permanent living or a smart investment.

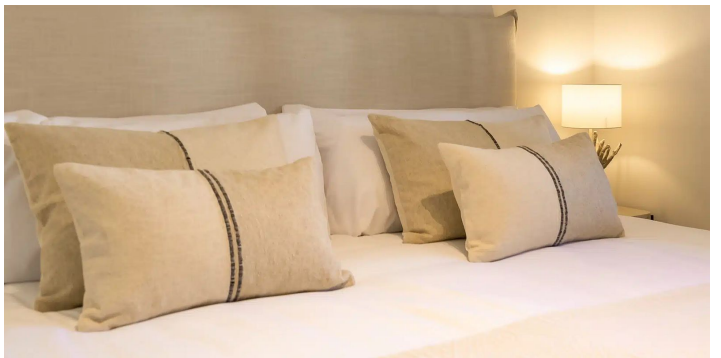
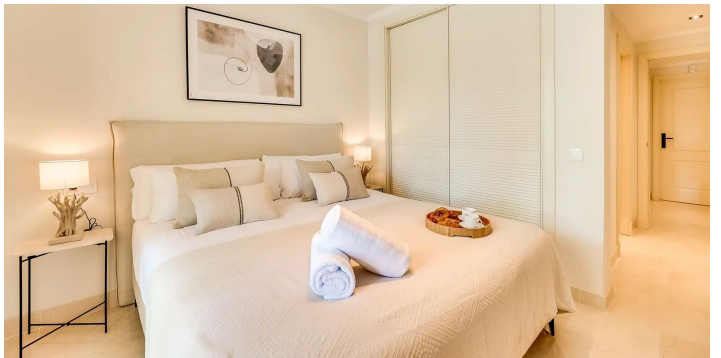
Housed in a modern building built in 2005, the property is within walking distance of all essential amenities including Centro Plaza, the exclusive Puerto Banús, the beach and restaurants and bars.

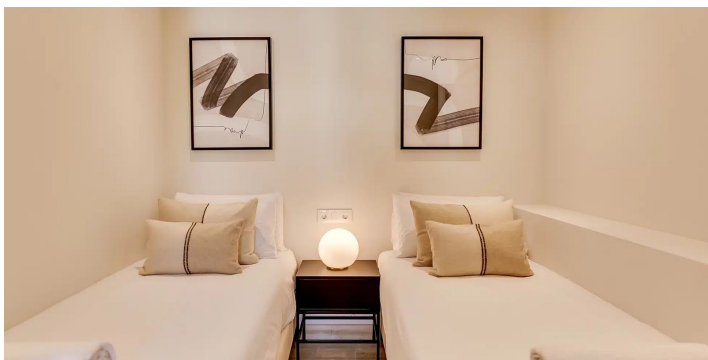
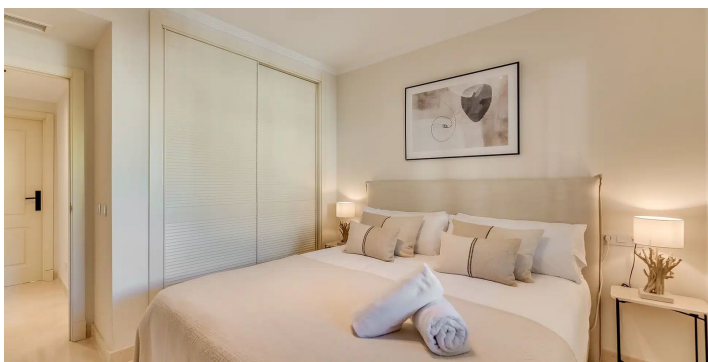
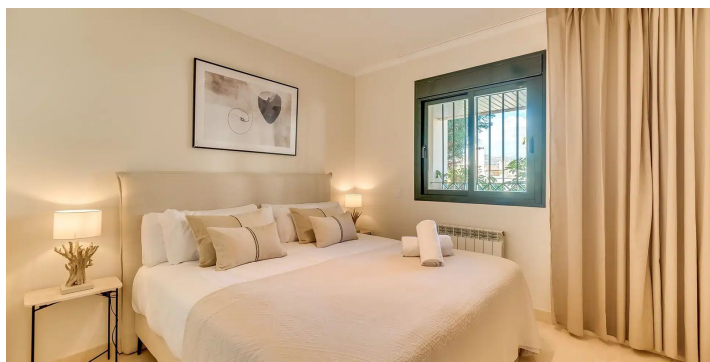
This sought after location combines tranquillity with convenience, making Hacienda El Palmeral a perfect choice for both holidaymakers and permanent residents.

[View Property Online](#)

GALLERY







ViVi Real Estate | Calle Almendralejo de Jarales 5 Mijas Costa, 29640
Tel: +34 672 816 975
Email: sales@vivi-realestate.com | Web: www.vivi-realestate.com