





# Townhouse in Atalaya

Price € 585,000

Bedrooms	3
Bathrooms	2.5
Build Size	120 m²
Terrace	70 m²
Plot Size	190 m²

SETTING

- ✓ Close To Golf
- ✓ Close To Town
- ✓ Close To Schools

ORIENTATION

- ✓ South East

CONDITION

- ✓ Excellent

POOL

- ✓ Communal

CLIMATE CONTROL

- ✓ Air Conditioning

VIEWS

- ✓ Urban

FEATURES

- ✓ Fitted Wardrobes
- ✓ Private Terrace
- ✓ Gym
- ✓ Storage Room
- ✓ Ensuite Bathroom
- ✓ Double Glazing

FURNITURE

- ✓ Not Furnished

KITCHEN

- ✓ Fully Fitted

GARDEN

- ✓ Communal
- ✓ Private

SECURITY

- ✓ Gated Complex
- ✓ Electric Blinds

PARKING

- ✓ Garage
- ✓ Private

## UTILITIES

- ✓ Electricity
- ✓ Drinkable Water

## CATEGORY

- ✓ Golf
  - ✓ Holiday Homes
  - ✓ Investment
  - ✓ Resale
- 

### ELEGANT NEWLY BUILT HOUSE IN ATALAYA

Fantastic house located in the exclusive El Campanario area (Atalaya), close to amenities, next to the Atalaya and El Paraiso golf courses, and very near Guadalmina and San Pedro de Alcántara.

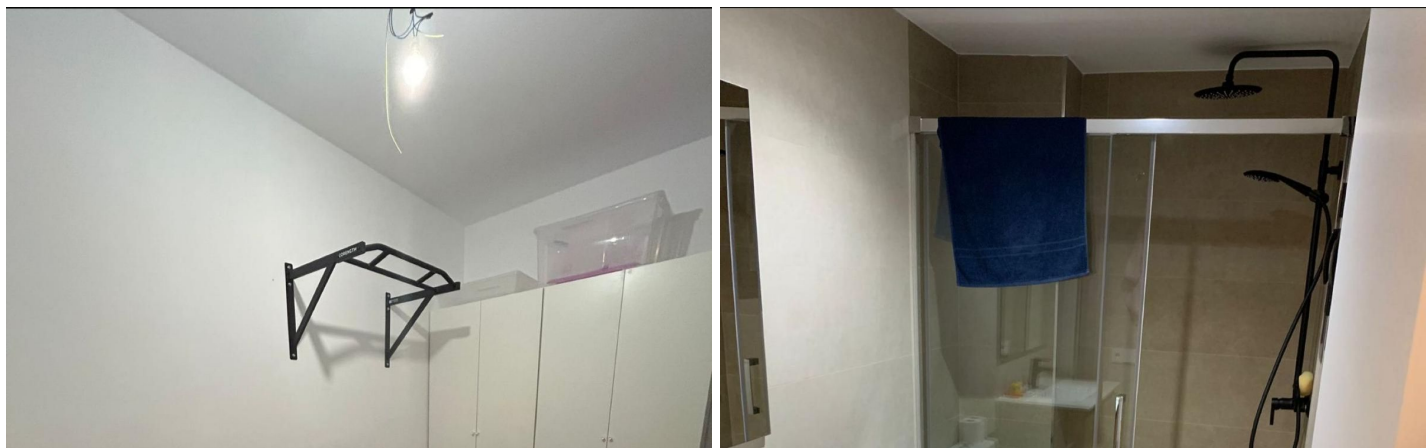
The property is distributed over several floors and has a total of 3 bedrooms, two bathrooms plus a guest toilet, a living room with an open-plan kitchen, a terrace with a garden, a solarium of approximately 35m2, and a basement currently used as a gym and storage area.

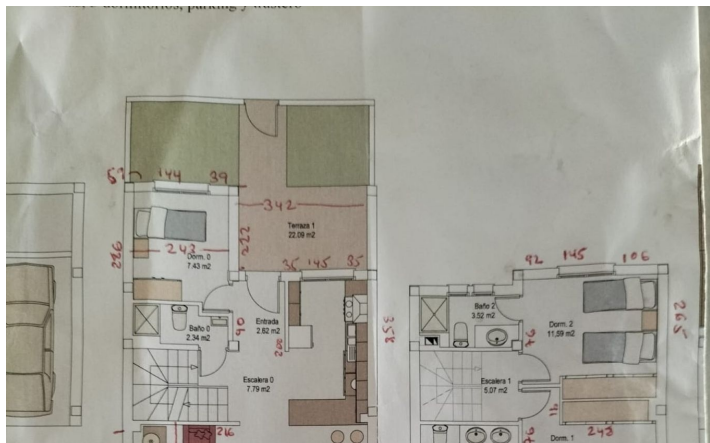
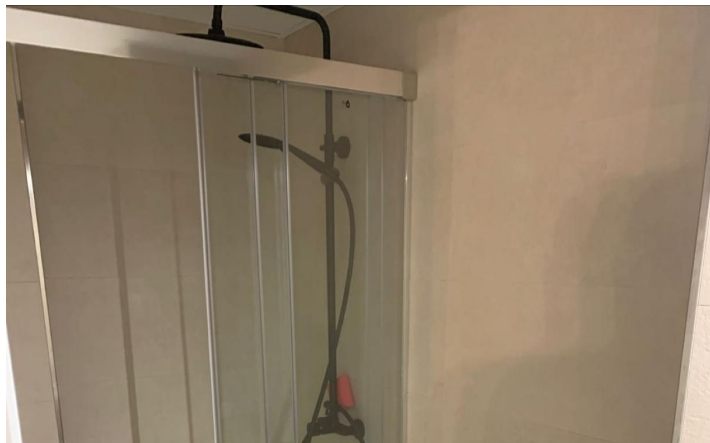
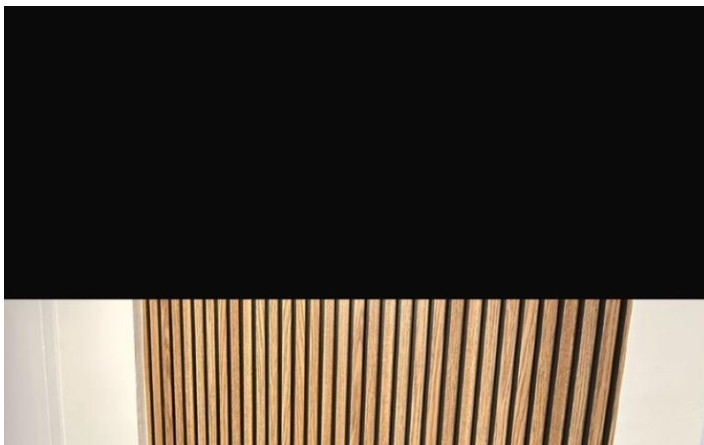
Located within a gated community with gardens and a communal swimming pool.

An ideal property for clients who want to enjoy a welcoming, move-in ready home in a quiet area close to all kinds of services.

[View Property Online](#)

GALLERY





Vivi Real Estate | Calle Almendralejo de Jarales 5 Mijas Costa, 29640

Tel: +34 672 816 975

Email: [sales@vivi-realestate.com](mailto:sales@vivi-realestate.com) | Web: [www.vivi-realestate.com](http://www.vivi-realestate.com)