



Townhouse in Benamara

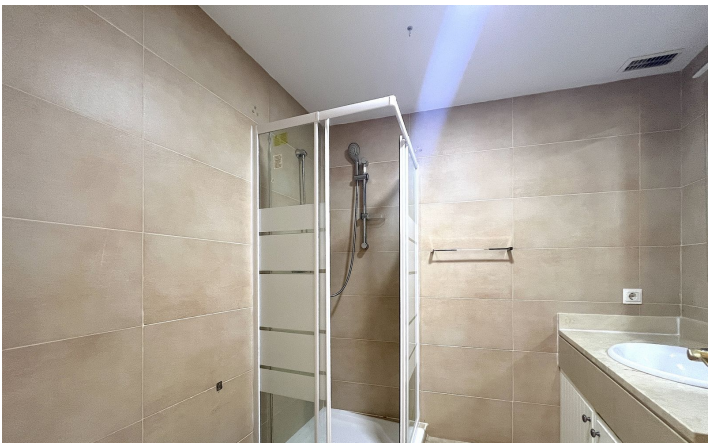
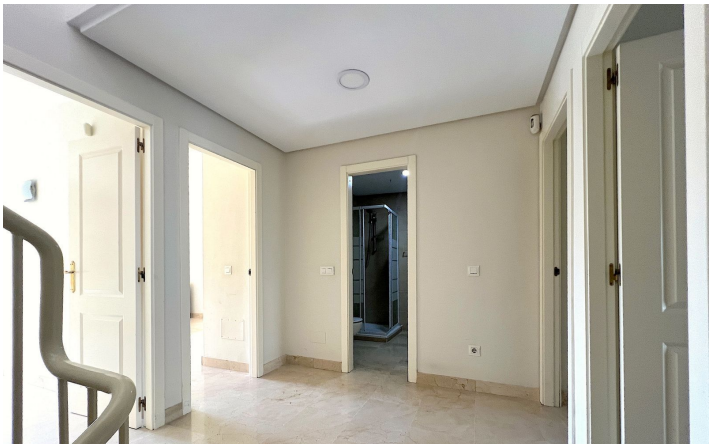
Price **€ 659,000**

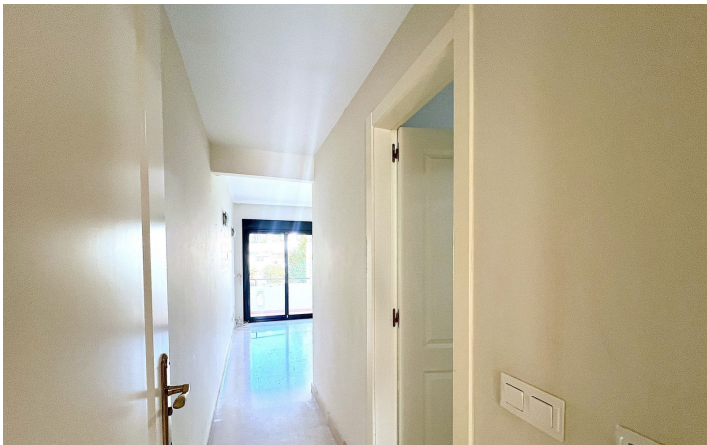
Bedrooms	4
Bathrooms	4
Build Size	307 m²
Terrace	80 m²
Plot Size	387 m²

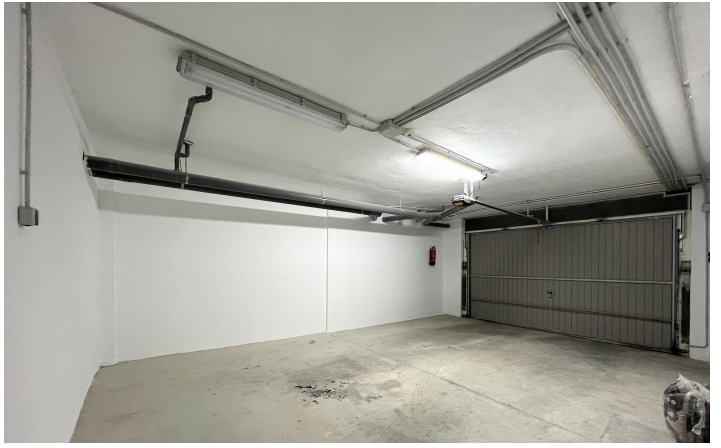
Spacious townhouse located in the Atalaya area next to Guadalmina, just a few minutes' drive from San Pedro de Alcántara and Puerto Banús, surrounded by several of the area's best golf courses, such as Atalaya, Guadalmina, El Paraíso, Los Arqueros, and more. The house is generously sized. It consists of a large living room with a separate kitchen with a utility room, four spacious bedrooms with three bathrooms, terrace areas, and a solarium. It also has a private parking space in the basement. Located within a small private development with communal gardens and a swimming pool, this is an ideal property for clients looking for a large home with many possibilities.

[View Property Online](#)

GALLERY







Vivi Real Estate | Calle Almendralejo de Jarales 5 Mijas Costa, 29640

Tel: +34 672 816 975

Email: sales@vivi-realestate.com | Web: www.vivi-realestate.com