





Semi-Detached House in Atalaya

Price € 695,000

Bedrooms	4
Bathrooms	4
Build Size	300 m²
Terrace	85 m²
Plot Size	741 m²

SETTING

- ✓ Close To Golf
- ✓ Close To Town
- ✓ Urbanisation

ORIENTATION

- ✓ South West

CONDITION

- ✓ Good

POOL

- ✓ Communal

CLIMATE CONTROL

- ✓ Air Conditioning

VIEWS

- ✓ Panoramic

FEATURES

- ✓ Covered Terrace
- ✓ Private Terrace
- ✓ Sauna
- ✓ Ensuite Bathroom

FURNITURE

- ✓ Fully Furnished

KITCHEN

- ✓ Fully Fitted

GARDEN

- ✓ Communal
- ✓ Private

PARKING

- ✓ Garage

CATEGORY

- ✓ Golf
- ✓ Holiday Homes
- ✓ Investment

Semi-Detached House, Atalaya, Costa del Sol.

4 Bedrooms, 4 Bathrooms, Built 0 m².

Setting : Close To Golf, Close To Town, Urbanisation.

Orientation : South West.

Condition : Good.

Pool : Communal.

Climate Control : Air Conditioning.

Views : Panoramic.

Features : Covered Terrace, Private Terrace, Sauna, Ensuite Bathroom.

Furniture : Fully Furnished.

Kitchen : Fully Fitted.

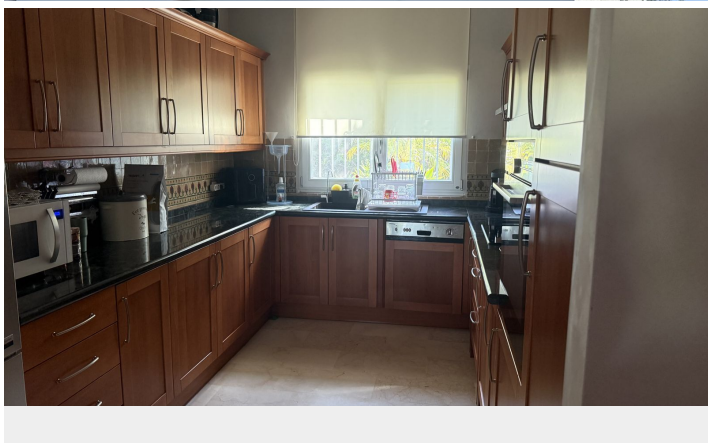
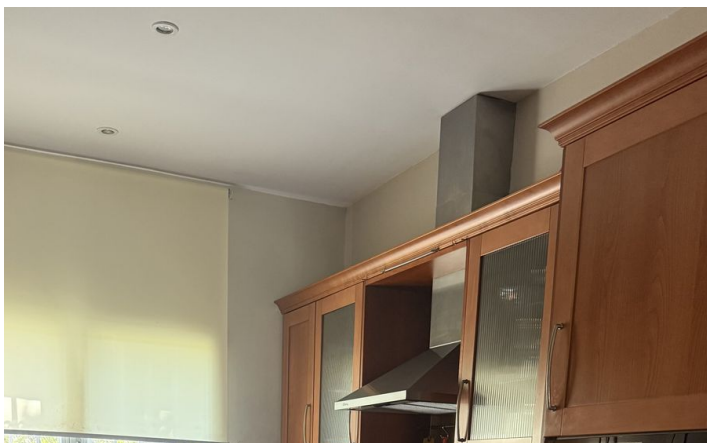
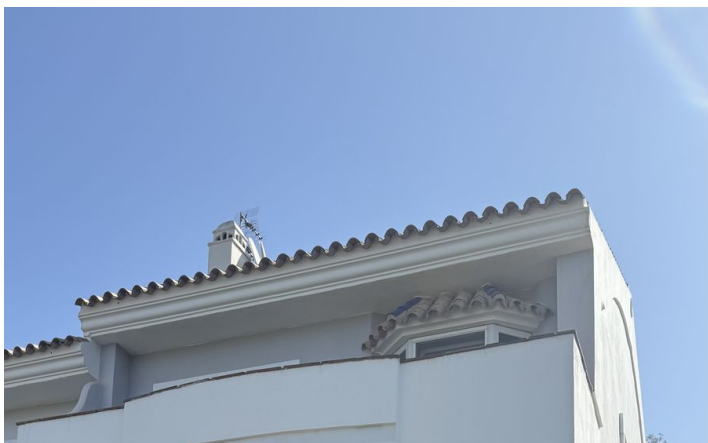
Garden : Communal, Private.

Parking : Garage.

Category : Golf, Holiday Homes, Investment.

[View Property Online](#)

GALLERY



Vivi Real Estate | Calle Almendralejo de Jarales 5 Mijas Costa, 29640

Tel: +34 672 816 975

Email: sales@vivi-realestate.com | Web: www.vivi-realestate.com