

Townhouse in Nueva Andalucía

Price € 730,000

Bedrooms	2
Bathrooms	2
Build Size	120 m²
Terrace	60 m²
Plot Size	180 m²

SETTING

- ✓

Frontline Golf
- ✓

Close To Port
- ✓

Close To Town
- ✓

Urbanisation
- ✓

Town
- ✓

Close To Shops
- ✓

Close To Schools
- ✓

Close To Golf
- ✓

Close To Sea
- ✓

Close To Marina

ORIENTATION

- ✓

East

CONDITION

- ✓

Excellent
- ✓

Recently Renovated
- ✓

Recently Refurbished

POOL

- ✓

Communal

CLIMATE CONTROL

- ✓

Air Conditioning
- ✓

Hot A/C
- ✓

Cold A/C
- ✓

Fireplace

VIEWS

- ✓

Sea
- ✓

Mountain
- ✓

Golf
- ✓

Panoramic
- ✓

Garden

FEATURES

- ✓

Fitted Wardrobes
- ✓

Private Terrace
- ✓

Solarium
- ✓

Storage Room
- ✓

Ensuite Bathroom
- ✓

Marble Flooring
- ✓

Barbeque
- ✓

Double Glazing
- ✓

Restaurant On Site

FURNITURE

- ✓

Fully Furnished

KITCHEN

- ✓

Fully Fitted

GARDEN

- ✓

Communal

SECURITY

- ✓ Alarm System
- ✓ 24 Hour Security
- ✓ Safe

PARKING

- ✓ Communal

UTILITIES

- ✓ Electricity
- ✓ Drinkable Water
- ✓ Telephone
- ✓ Gas

CATEGORY

- ✓ Golf
- ✓ Holiday Homes
- ✓ Investment
- ✓ Luxury
- ✓ Resale

Stylish Townhouse with Scenic Views in Aloha Pueblo, Nueva Andalucía

Nestled in the heart of the prestigious Aloha Pueblo community in Nueva Andalucía, this thoughtfully refurbished townhouse (refurbished in 2024) offers a blend of traditional Andalusian architecture and contemporary living.

Set against a stunning backdrop of La Concha Mountain, Aloha Golf Course, the home is perfectly positioned in one of Marbella’s most coveted areas.

Spanning three levels, the residence features multiple inviting outdoor areas designed for both relaxation and entertainment. A terrace on the main floor is ideal for enjoying coffee at sunrise or dining al fresco with panoramic vistas. The expansive rooftop terrace offers a private sunbathing oasis or the ultimate setting for evening gatherings beneath the Mediterranean sky.

Inside, the main level boasts a light-filled, open-concept living space anchored by a cozy fireplace. A sleek, fully equipped kitchen with a waterfall island and modern cabinetry completes this stylish setting. Large windows seamlessly connect the indoor and outdoor environments, enhancing the home’s bright and airy ambiance.

The lower-level features two well-proportioned double bedrooms. The master bedroom includes an en-suite bathroom with a walk-in shower and double vanity, offering both comfort and functionality. The second bedroom benefits from direct access to a private patio, adding a touch of outdoor tranquillity. A spacious family bathroom with a walk-in shower also serves this level, ensuring convenience for both residents and guests.

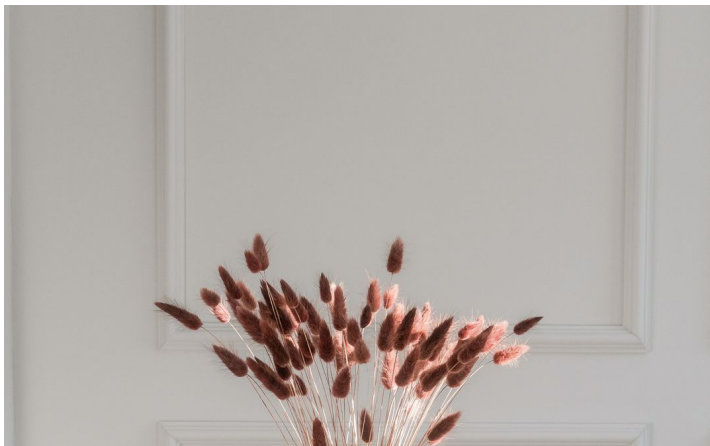
Aloha Pueblo is a unique development inspired by the charm of a classic Andalusian village. Built in the late 1980s, the community features cobbled streets, whitewashed facades, flower-filled walkways, and tranquil squares. It combines timeless aesthetics with modern comforts, including a communal swimming pool, landscaped gardens, and 24-hour security with surveillance and on-site guards.

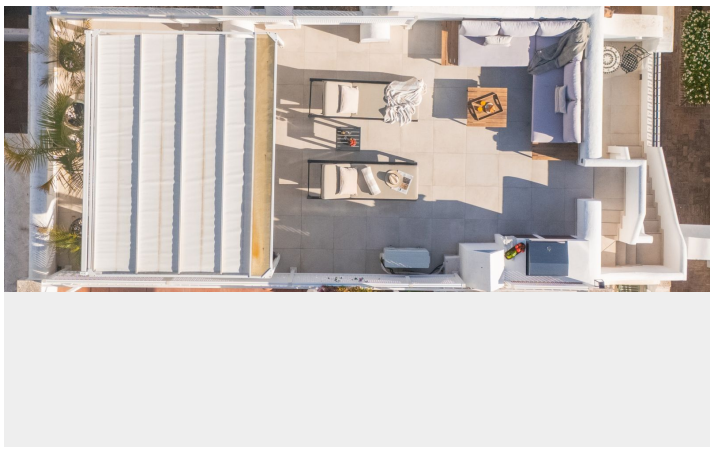
Residents enjoy proximity to boutique cafés and eateries within the complex, while top-tier golf courses such as Aloha Golf, Los Naranjos, and Las Brisas are just minutes away. The vibrant energy of Puerto Banús, sandy beaches, fine dining, luxury shopping, and reputable international schools are all easily accessible.

Whether you are seeking a permanent residence, a stylish holiday retreat, or a high-potential rental investment, this exceptional townhouse offers a rare opportunity to enjoy the best of the Costa del Sol lifestyle in a truly picturesque setting.

[View Property Online](#)

GALLERY







Vivi Real Estate | Calle Almendralejo de Jarales 5 Mijas Costa, 29640

Tel: +34 672 816 975

Email: sales@vivi-realestate.com | Web: www.vivi-realestate.com