

Penthouse in Estepona

Price **€ 895,000**

Bedrooms	3
Bathrooms	2
Build Size	122 m²
Terrace	138 m²
Plot Size	364 m²

SETTING

- ✓ Close To Shops
- ✓ Close To Schools
- ✓ Close To Forest
- ✓ Urbanisation

ORIENTATION

- ✓ West

CONDITION

- ✓ Excellent
- ✓ New Construction

POOL

- ✓ Communal

CLIMATE CONTROL

- ✓ Air Conditioning
- ✓ Pre Installed A/C
- ✓ Hot A/C
- ✓ Cold A/C

VIEWS

- ✓ Mountain
- ✓ Panoramic
- ✓ Garden
- ✓ Pool

FEATURES

- ✓ Covered Terrace
- ✓ Lift
- ✓ Fitted Wardrobes
- ✓ Private Terrace
- ✓ WiFi
- ✓ Gym
- ✓ Utility Room
- ✓ Access for people with reduced mobility
- ✓ Jacuzzi
- ✓ Double Glazing
- ✓ Domotics

FURNITURE

- ✓ Part Furnished

KITCHEN

- ✓ Fully Fitted

GARDEN

- ✓ Communal

SECURITY

- ✓ Gated Complex
- ✓ Entry Phone
- ✓ Alarm System
- ✓ Safe

PARKING

- ✓ Underground

UTILITIES

- ✓ Electricity

CATEGORY

- ✓ Luxury

Modern Apartment in Atalaya Emotion Residential Complex

Spacious and bright 3-bedroom, 2-bathroom apartment in the prestigious Atalaya Emotion residential complex just finished in 2024.

This 3-bedroom apartment in Atalaya Emotion complex is located is situated in Atalaya, on the Eastern edge of Estepona and Benahavis, 5 minutes from San Pedro Alcantara.

The urbanisation is located next to the Atalaya International School with education from primary to high school; Mercadona supermarket, Atalaya Golf course, restaurants and cafeterias in the close proximity. The property is west-facing, providing beautiful natural light in the evening and a comfortable atmosphere throughout the day.

This West-facing apartment consists of 3 spacious bedrooms with 2 bathrooms, walk-in wardrobes, large terrace that allows enjoying sunbathing outdoors.

Communal areas include heated indoor- and outdoor- swimming pools, jacuzzi, kids swimming pool, gym, SPA and chill out areas.

Uneground parking and independent storage space is included in the price of the apartment.

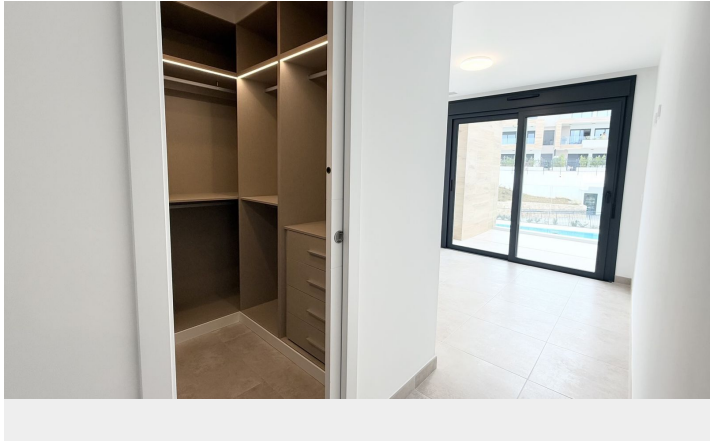
This complex is built using latest energy-saving and ecologic technologies that will lower community and energy consumption

[View Property Online](#)

GALLERY







Vivi Real Estate | Calle Almendralejo de Jarales 5 Mijas Costa, 29640
Tel: +34 672 816 975
Email: sales@vivi-realestate.com | Web: www.vivi-realestate.com