



Detached Villa in Torremuelle

Price **€ 1,095,000**

Bedrooms	5
Bathrooms	4
Build Size	293 m²
Plot Size	920 m²

SETTING

- ✓ Close To Shops
- ✓ Close To Schools
- ✓ Close To Sea
- ✓ Close To Town

ORIENTATION

- ✓ South East

CONDITION

- ✓ Good

POOL

- ✓ Private

CLIMATE CONTROL

- ✓ Air Conditioning
- ✓ Fireplace

VIEWS

- ✓ Sea
- ✓ Garden
- ✓ Mountain
- ✓ Pool
- ✓ Panoramic
- ✓ Street

FEATURES

- ✓ Covered Terrace
- ✓ Private Terrace
- ✓ Storage Room
- ✓ Double Glazing
- ✓ Fitted Wardrobes
- ✓ Solarium
- ✓ Marble Flooring
- ✓ Near Transport
- ✓ Guest Apartment
- ✓ Bar

FURNITURE

- ✓ Optional

KITCHEN

- ✓ Fully Fitted

GARDEN

- ✓ Private

SECURITY

- ✓ Alarm System

PARKING

- ✓ Private

Welcome to this lovely, large villa in Torremuelle. The villa is located on a small hill with amazing views over the coastline and mountains of Benalmadena Costa. The location is just perfect, close to the sea and with excellent communication. You can reach the beach or the train station within minutes of walk. The new racket centre with tennis and padel courts in Torremuelle is also just a few minutes away.

There are several lounge areas in the tropical garden where you can relax, eat, or socialize. At the covered terrace, next to the pool, you will find shade during the day and an open fireplace at night. Here is a perfect spot to relax day or night.

You can enjoy the grand views over the from the garden or from the roof terrace.

The villa is distributed over two floors with 5 bedroom and 4 bathrooms, including a separate apartment that can be rented out or provide privacy when you have friends or family visiting. All bedrooms have individual hot/cool air-condition.

Inside is the social areas on the main floor. the living room and kitchen has an open floor plan. Here you will also find a walk-in closet, one bedroom and two bathrooms. On the lower floor you will find the master bedroom two guestrooms with its bathrooms. Here is also the separate apartment located, with its own kitchen and bathroom, it has its own entrance and terrace and could be an integrated part of the rest of the house or seen as a separate apartment.

The villa has LPO and granted a turist license.

There is a private garage with storage space at the street level.

About Torremuelle, located in the charming town of Benalmadena on the Costa del Sol in southern Spain, is a picturesque residential neighborhood renowned for its stunning hillside setting overlooking the Mediterranean Sea. With its golden sandy beaches, a mix of traditional and modern housing options, and a serene atmosphere, Torremuelle offers residents and visitors an ideal haven for relaxation and tranquility. The neighborhood provides easy access to essential amenities, including shops, restaurants, and recreational facilities like the Torremuelle Sports Centre. Boasting excellent transportation links to nearby towns and cities, Torremuelle presents an attractive option for those seeking a peaceful coastal lifestyle while still being close to urban conveniences and recreational opportunities.

Distances

Coast/Beach: 10 Min (walk)

Train station: 450m/5 min (walk)

Airport: 22min (19km)

Benalmadena Pueblo: 10min/5km

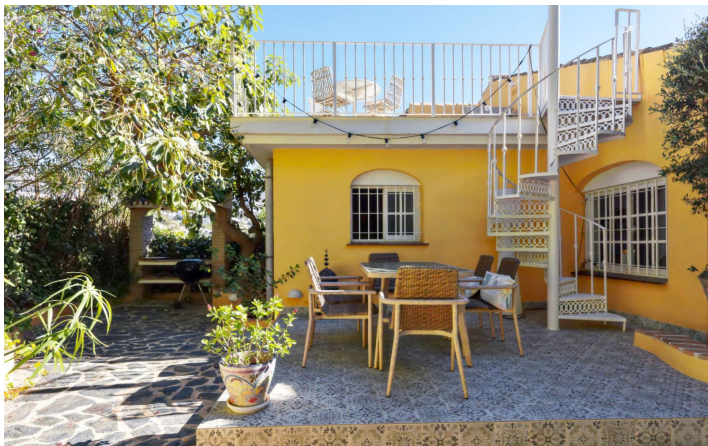
Fuengirola: 10 Min

Padel/tennis: 550m (walk)

Golf: 8 min/4km

[View Property Online](#)

GALLERY







ViVi Real Estate | Calle Almendralejo de Jarales 5 Mijas Costa, 29640

Tel: +34 672 816 975

Email: sales@vivi-realestate.com | Web: www.vivi-realestate.com