



# Penthouse Duplex in Puerto Banús

Price € 1,600,000

Bedrooms	3
Bathrooms	3
Build Size	166 m²
Terrace	155 m²
Plot Size	321 m²

SETTING

- ✓ Beachside
- ✓ Close To Sea

ORIENTATION

- ✓ South
- ✓ South West
- ✓ West

CONDITION

- ✓ Excellent

POOL

- ✓ Communal

CLIMATE CONTROL

- ✓ Air Conditioning

FEATURES

- ✓ Covered Terrace
- ✓ Lift
- ✓ Private Terrace
- ✓ Storage Room

GARDEN

- ✓ Communal

SECURITY

- ✓ Gated Complex

PARKING

- ✓ Underground
- ✓ Garage
- ✓ Covered
- ✓ Private

Located in a prestigious urbanization in the area of Puerto Banus, we present this spectacular duplex offers a privileged lifestyle in a quiet and landscaped environment. Just 5 minutes walk from the beach, 15 minutes from Puerto Banus and very close to the promenade of San Pedro, its location allows you to enjoy the best dining, shopping and services in the area.

This luxury apartment is distributed on two floors with spacious and bright spaces designed to enjoy the Mediterranean climate. On the main floor, a large living-dining room gives direct access to two terraces, one of them perfect for creating a barbecue and outdoor dining area. The independent kitchen, fully equipped, has access to the laundry room. It has three bedrooms and three bathrooms, with a comfortable and functional distribution that guarantees privacy and comfort.

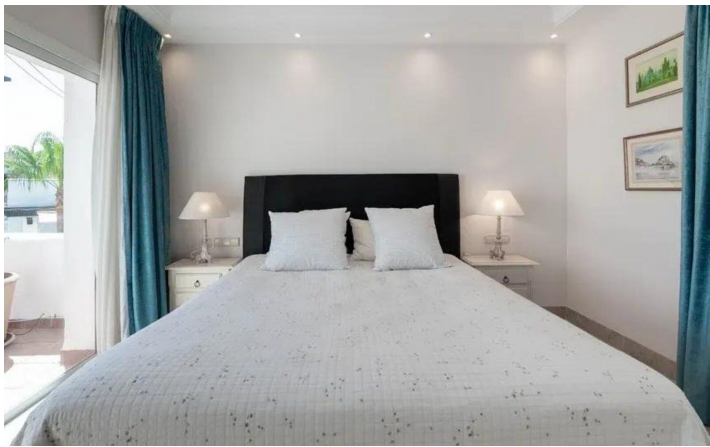
On the top floor, a private 155 m<sup>2</sup> solarium offers a unique space to relax, sunbathe or design a chill-out area with unobstructed views.

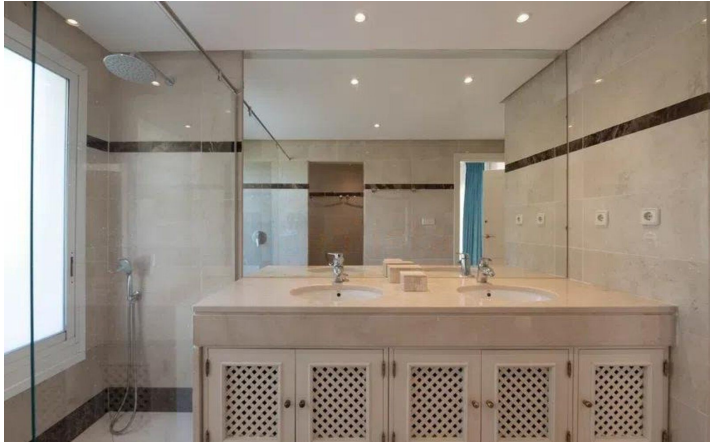
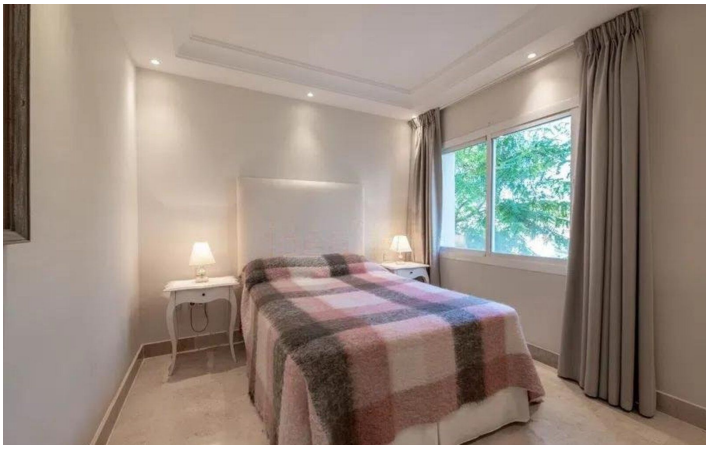
In addition, the property includes parking space and storage room, air conditioning hot / cold and is part of an exclusive community with swimming pool and perfectly manicured gardens.

Do not hesitate to request a visit!

[View Property Online](#)

GALLERY





---

Vivi Real Estate | Calle Almendralejo de Jarales 5 Mijas Costa, 29640  
Tel: +34 672 816 975  
Email: [sales@vivi-realestate.com](mailto:sales@vivi-realestate.com) | Web: [www.vivi-realestate.com](http://www.vivi-realestate.com)