



Middle Floor Apartment in Estepona

Price **€ 1,700,000**

Bedrooms	4
Bathrooms	3
Build Size	131 m²
Terrace	38 m²
Plot Size	169 m²

SETTING

- ✓ Beachfront
- ✓ Close To Shops
- ✓ Close To Schools
- ✓ Front Line Beach Complex
- ✓ Beachside
- ✓ Close To Sea
- ✓ Close To Marina
- ✓ Close To Port
- ✓ Close To Town
- ✓ Urbanisation

ORIENTATION

- ✓ South East

CONDITION

- ✓ Excellent

POOL

- ✓ Communal
- ✓ Indoor
- ✓ Children`s Pool

CLIMATE CONTROL

- ✓ Air Conditioning

VIEWS

- ✓ Sea
- ✓ Pool
- ✓ Beach
- ✓ Garden

FEATURES

- ✓ Covered Terrace
- ✓ Near Transport
- ✓ Gym
- ✓ Storage Room
- ✓ Access for people with reduced mobility
- ✓ 24 Hour Reception
- ✓ Lift
- ✓ Private Terrace
- ✓ Sauna
- ✓ Utility Room
- ✓ Double Glazing
- ✓ Fiber Optic
- ✓ Fitted Wardrobes
- ✓ WiFi
- ✓ Paddle Tennis
- ✓ Ensuite Bathroom
- ✓ Domotics

FURNITURE

- ✓ Fully Furnished

KITCHEN

- ✓ Fully Fitted

GARDEN

- ✓ Communal

SECURITY

- ✓ Gated Complex
- ✓ Entry Phone
- ✓ Alarm System
- ✓ 24 Hour Security

PARKING

- ✓ Underground
- ✓ More Than One
- ✓ Private

UTILITIES

- ✓ Electricity
- ✓ Drinkable Water

CATEGORY

- ✓ Bargain
- ✓ Beachfront
- ✓ Holiday Homes
- ✓ Investment
- ✓ Luxury
- ✓ Resale
- ✓ Contemporary

The Edge – Exclusive 4-Bedroom Seafront Apartment, Estepona

This exceptional apartment in the prestigious The Edge by Kronos Homes development epitomises the essence of Mediterranean luxury living. Located directly on the beachfront in Estepona, it offers breathtaking views of the Mediterranean Sea, Gibraltar, and the African coastline.

Property Description

A contemporary apartment of approximately 170 m² (including terraces) featuring:

- 4 spacious bedrooms with direct access to terraces,
- 3 elegant bathrooms, including a master suite with bathtub and walk-in shower,
- a designer kitchen fully equipped with premium Gaggenau appliances,
- a bright, open-plan living room with floor-to-ceiling windows and stunning sea views,
- a main terrace offering an impressive panoramic view of the Mediterranean,
- 2 underground parking spaces and a storage room.

The Edge Complex

Designed by the renowned architect Rafael de La-Hoz, The Edge stands out for its organic architecture and minimalist luxury. Residents enjoy access to:

- direct beach access,
- spectacular infinity pools overlooking the sea,
- a wellness area with an indoor heated pool, gym, and sauna,
- concierge service and 24-hour security,
- expansive Mediterranean gardens creating a private oasis of tranquillity.

Location

The Edge is ideally situated just minutes from Estepona's town centre and only 20 minutes from Puerto Banús. Surrounded by golf courses, fine dining, shops, and a marina, with easy access to Malaga and Gibraltar airports.

Highlights

Frontline beach location

Spectacular sea views

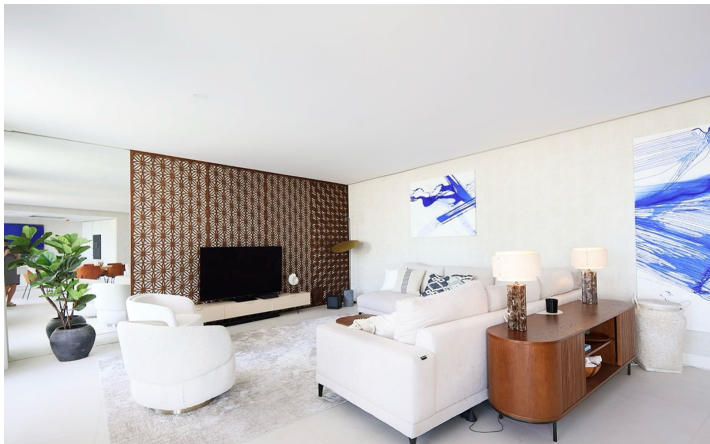
High-end finishes: kitchen & Gaggenau appliances

Prestigious Kronos Homes development

The perfect combination of luxury, privacy, and comfort

[View Property Online](#)

GALLERY







Vivi Real Estate | Calle Almendralejo de Jarales 5 Mijas Costa, 29640
Tel: +34 672 816 975
Email: sales@vivi-realestate.com | Web: www.vivi-realestate.com