



Detached Villa in Aloha

Price € 4,995,000

Bedrooms	7
Bathrooms	8
Build Size	710 m²
Terrace	166 m²
Plot Size	2167 m²

SETTING

- ✓ Frontline Golf
- ✓ Close To Shops
- ✓ Close To Schools
- ✓ Close To Golf
- ✓ Close To Sea
- ✓ Close To Port
- ✓ Close To Town

ORIENTATION

- ✓ South East

POOL

- ✓ Private

CLIMATE CONTROL

- ✓ Air Conditioning
- ✓ Fireplace

VIEWS

- ✓ Sea
- ✓ Panoramic
- ✓ Mountain
- ✓ Garden
- ✓ Golf
- ✓ Pool

FEATURES

- ✓ Covered Terrace
- ✓ Private Terrace
- ✓ Utility Room
- ✓ Barbeque
- ✓ Fitted Wardrobes
- ✓ WiFi
- ✓ Ensuite Bathroom
- ✓ Double Glazing
- ✓ Near Transport
- ✓ Storage Room
- ✓ Marble Flooring

FURNITURE

- ✓ Fully Furnished

KITCHEN

- ✓ Partially Fitted

GARDEN

- ✓ Private

SECURITY

- ✓ Electric Blinds
- ✓ Alarm System

PARKING

- ✓ Private

CATEGORY

✓ Golf

✓ Luxury

Stunning frontline golf villa with panoramic mountain views to La Concha as well as overlooking the beautiful Aloha Golf course.

The Villa is situated on a quiet cul-de-sac, just a short distance to the famous Puerto Banús marina and Aloha Gardens. The property is extremely convenient in terms of the floor plan distribution. All the main social areas such as kitchen, living room, dining room are well connected with direct accesses outside to the beautiful outdoor space that gives you a generous amount of natural sunshine throughout the home.

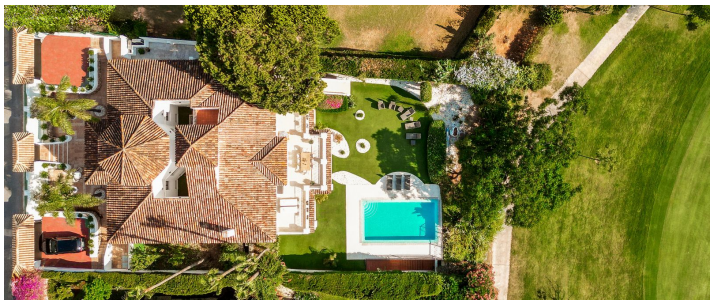
All bedrooms are extremely good size with en suite bathrooms. All the bedrooms on the lower part of the house also have direct accesses to the gardens and pool area.

This is an incredible opportunity to acquire an elegant high standard Andalusian villa in the most prime location of Nueva Andalucia with walking distance to all the amenities.

This home is an ideal permanent or holiday home, don't miss this one of a kind

[View Property Online](#)

GALLERY









ViVi Real Estate | Calle Almendralejo de Jarales 5 Mijas Costa, 29640

Tel: +34 672 816 975

Email: sales@vivi-realestate.com | Web: www.vivi-realestate.com