



# Ground Floor Apartment in Manilva

Price **€ 398,000**

Bedrooms	2 - 3
Bathrooms	2
Build Size	86 - 118 m²
Terrace	27 - 241 m²

## SETTING

- ✓ Close To Shops

## CONDITION

- ✓ New Construction

## POOL

- ✓ Communal

## CLIMATE CONTROL

- ✓ Pre Installed A/C

## VIEWS

- ✓ Sea
- ✓ Panoramic
- ✓ Garden
- ✓ Pool

## FEATURES

- ✓ Covered Terrace
- ✓ Lift
- ✓ Private Terrace
- ✓ Gym
- ✓ Sauna
- ✓ Storage Room
- ✓ Access for people with reduced mobility
- ✓ Jacuzzi

## KITCHEN

- ✓ Fully Fitted
- ✓ Kitchen-Lounge

## GARDEN

- ✓ Communal
- ✓ Landscaped

## PARKING

- ✓ Garage
- ✓ Communal

## CATEGORY

- ✓ New Development

New Development: Prices from €398,000 to €571,000. [Bedrooms: 2 - 3] [Bathrooms: 2] [Built size: 86m2 - 118m2].  
This is a development with 100 apartments in a magnificent residential area and in an extraordinary location.

The two and three-bedroom apartments are distributed in different blocks resulting in a balanced ensemble. The project combines a modern design architecture wrapped with a perfectly studied landscaping that surrounds the building with its large gardens and common leisure areas that allow the client to enjoy a resort concept.

Very spacious apartments, penthouses and ground floors with distributions, qualities and finishes designed so that the property is just what you are looking for. Every apartment has a large terrace, a key part of the entire apartment, a spacious extension with magnificent views.

The location and the environment are other great features of this development, which has unbeatable views of the Mediterranean Sea. Manilva is a unique town due to its location, culture and gastronomy, a place to enjoy the sun, the sea and a nice and friendly lifestyle.

At this place, the spacious common areas have been designed to offer a wide range of amenities, services and fun for everyone.

A resort in your own home with large gardens with an infinity pool with saline chlorination, solarium, relaxation and yoga area, spa with Turkish bath, jacuzzi and sauna, indoor fitness area, leisure room with coworking, multimedia and games area, all surrounded by gardens with landscape treatment...

The list of elements of these areas is designed so that you can enjoy this residential area regardless of your preferred lifestyle

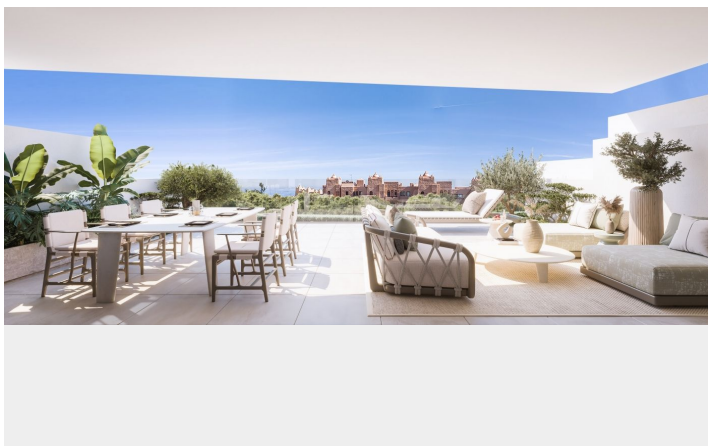
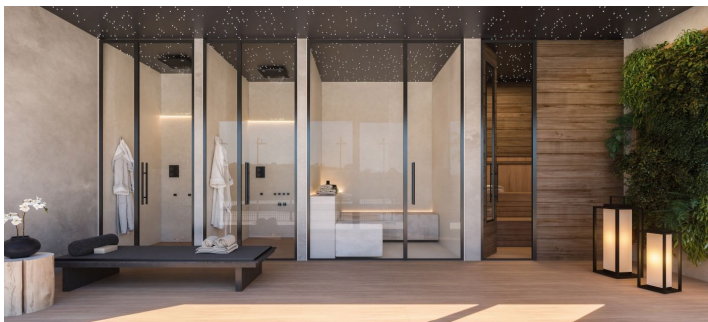
The units have been designed with an ideal layout with large spaces and terraces designed to be an extension of the apartment. The orientation of the development and its strategic location allow the views and the sun to be the main features of the terraces.

The architectural team has performed a study of the environment and the location, which together with an ideal ratio between built and useful area, make these apartments ideal.

[View Property Online](#)



## GALLERY



ViVi Real Estate | Calle Almendralejo de Jarales 5 Mijas Costa, 29640

Tel: +34 672 816 975

Email: [sales@vivi-realestate.com](mailto:sales@vivi-realestate.com) | Web: [www.vivi-realestate.com](http://www.vivi-realestate.com)