

Ground Floor Apartment in Nueva Andalucía

Price € 619,000

| | |
|------------|--------|
| Bedrooms | 2 |
| Bathrooms | 2 |
| Build Size | 121 m² |
| Terrace | 49 m² |
| Plot Size | 170 m² |

SETTING

- ✓ Close To Golf
- ✓ Urbanisation

ORIENTATION

- ✓ South West

CONDITION

- ✓ Excellent

POOL

- ✓ Communal

CLIMATE CONTROL

- ✓ Air Conditioning

VIEWS

- ✓ Sea
- ✓ Mountain
- ✓ Panoramic
- ✓ Forest

FEATURES

- ✓ Lift
- ✓ Private Terrace
- ✓ Gym
- ✓ Storage Room
- ✓ Double Glazing
- ✓ 24 Hour Reception
- ✓ Fiber Optic

FURNITURE

- ✓ Fully Furnished

KITCHEN

- ✓ Fully Fitted

GARDEN

- ✓ Communal
- ✓ Landscaped

SECURITY

- ✓ Gated Complex
- ✓ 24 Hour Security

PARKING

- ✓ Underground

UTILITIES

✓ Electricity

CATEGORY

✓ Investment

✓ Contemporary

New on the Market !

This luxury Urbanisation in Aloha, Nueva Andalucia give you the Beverley Hills Feeling

The view is Panoramic over the hills down to the Mediterranean Sea and overlocking the pool area as well

2bedrooms and 2 bathrooms with an L -shaped Living room .It is a corner apartment with lots of light and high

ceiling ,is a very nice home feeling. Underground parking and a big Storage room.The highlight of this home is the

lovely Terrace ,Chill out corner,outdoor dinners ,drinks ,A gate from the terrace direct to the community garden and

pool. A luxury Fitness room with changing rooms, Outdoor kitchen/ Bar area for having your privat parties in a Natural

setting .This is a property to be viewed to get the the lovely home feeling

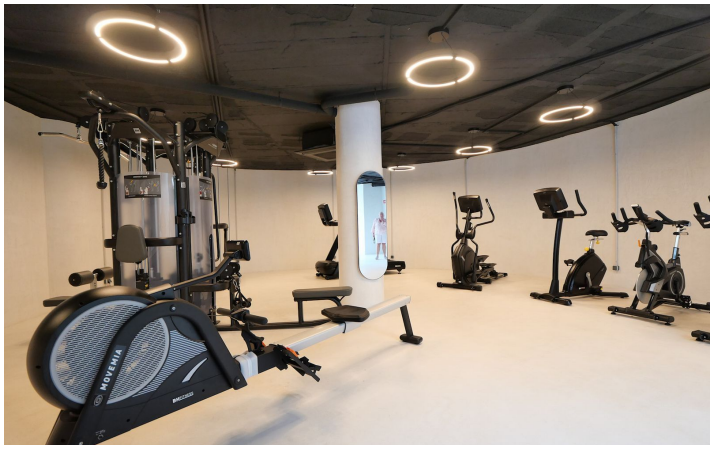
5 min to Puerto Banus ,Centro Plaza

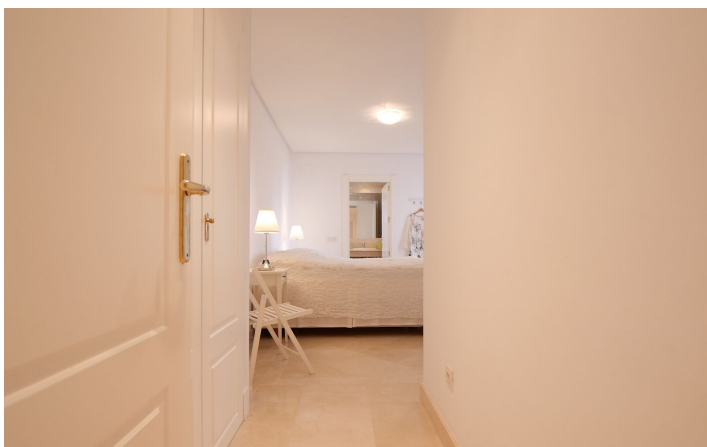
Can be viewed with short notice!

[View Property Online](#)

GALLERY







Vivi Real Estate | Calle Almendralejo de Jarales 5 Mijas Costa, 29640
Tel: +34 672 816 975
Email: sales@vivi-realestate.com | Web: www.vivi-realestate.com