



Semi-Detached House in Manilva

Price **€ 385,000**

Bedrooms	2 - 3
Bathrooms	2 - 3
Build Size	128 - 207 m²

SETTING

- ✓ Close To Shops

CONDITION

- ✓ New Construction

CLIMATE CONTROL

- ✓ Pre Installed A/C
- ✓ Cold A/C

VIEWS

- ✓ Sea
- ✓ Mountain
- ✓ Garden

FEATURES

- ✓ Fitted Wardrobes
- ✓ Private Terrace
- ✓ Ensuite Bathroom
- ✓ Double Glazing

KITCHEN

- ✓ Fully Fitted

GARDEN

- ✓ Private

PARKING

- ✓ Garage
- ✓ Private

CATEGORY

- ✓ New Development

New Development: Prices from €385,000 to €490,000. [Bedrooms: 2 - 3] [Bathrooms: 2 - 3] [Built size: 128m2 - 207m2].

VILLA 1

207.45 m² built on a 240 m² plot. It has 3 bedrooms, 3 bathrooms, living room, kitchen, terrace, private garden, private garage for 2 vehicles, basement with natural light and excellent sea views.

SEMI-DETACHED HOUSE 2

128.25 m² built on a 153 m² plot. It has 2 bedrooms, 2 bathrooms, living room, kitchen, terrace, private garden, parking area within the plot, basement with natural light and excellent sea views.

SEMI-DETACHED HOUSE 3

128.25 m² built on a 138 m² plot. It has 2 bedrooms, 2 bathrooms, living room, kitchen, terrace, private garden, parking area within the plot, basement with natural light and excellent sea views.

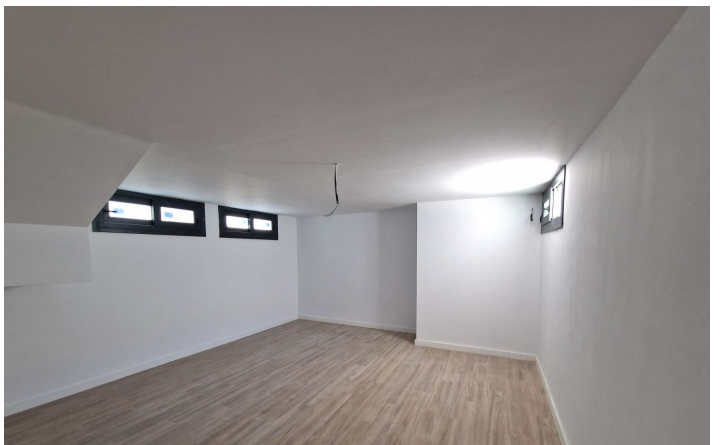
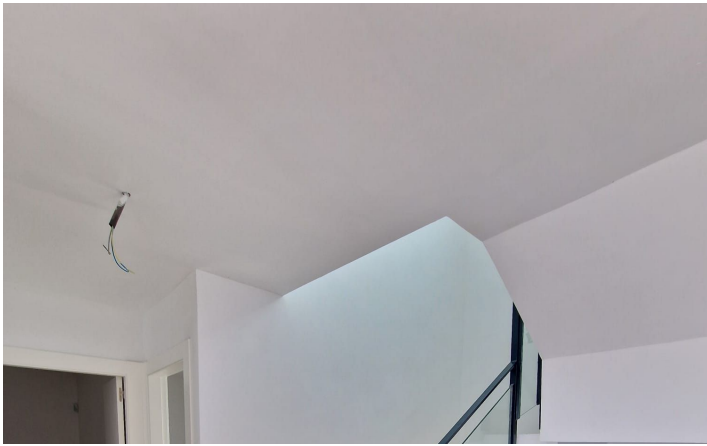
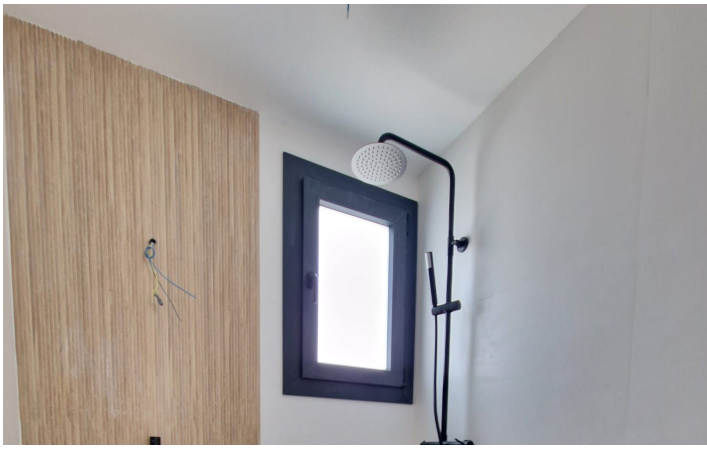
SEMI-DETACHED HOUSE 5

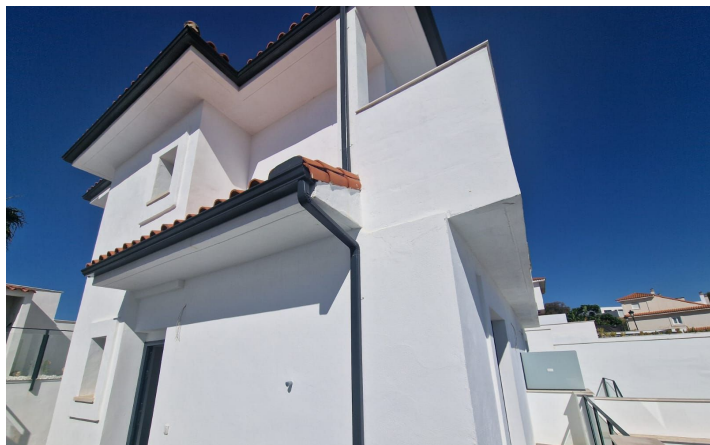
128.25 m² built on a 156 m² plot. It has 2 bedrooms, 2 bathrooms, living room, kitchen, terrace, private garden, parking area within the plot, basement with natural light and excellent sea views.

[View Property Online](#)

GALLERY







ViVi Real Estate | Calle Almendralejo de Jarales 5 Mijas Costa, 29640

Tel: +34 672 816 975

Email: sales@vivi-realestate.com | Web: www.vivi-realestate.com