



# Middle Floor Apartment in Marbella

Price € 500,000

Bedrooms	2
Bathrooms	2
Build Size	91 m <sup>2</sup>
Terrace	81 m <sup>2</sup>
Plot Size	172 m <sup>2</sup>

## SETTING

- ✓ Town
- ✓ Close To Port
- ✓ Close To Town
- ✓ Close To Marina
- ✓ Commercial Area
- ✓ Close To Shops
- ✓ Close To Schools
- ✓ Close To Golf
- ✓ Close To Sea
- ✓ Marina

## ORIENTATION

- ✓ South
- ✓ South West

## CONDITION

- ✓ Excellent

## POOL

- ✓ Communal

## CLIMATE CONTROL

- ✓ Air Conditioning
- ✓ Pre Installed A/C
- ✓ Hot A/C

## VIEWS

- ✓ Mountain
- ✓ Garden
- ✓ Pool

## FEATURES

- ✓ Covered Terrace
- ✓ Private Terrace
- ✓ Access for people with reduced mobility
- ✓ Fitted Wardrobes
- ✓ WiFi
- ✓ Basement
- ✓ Near Transport
- ✓ Storage Room

## FURNITURE

- ✓ Fully Furnished

## KITCHEN

- ✓ Fully Fitted

## GARDEN

- ✓ Communal

## SECURITY

- ✓ Gated Complex
- ✓ Alarm System
- ✓ 24 Hour Security

**PARKING**

✓ Underground

**UTILITIES**

✓ Electricity

**CATEGORY**

✓ Bargain

✓ Cheap

✓ Holiday Homes

---

Great open views with a large terrace of 89 meters of great privacy in this apartment with 2 bedrooms and 2 bathrooms, as well as a living-dining room and a fully equipped kitchen with hot and cold air throughout the house.

Fantastic views of the tropical gardens as well as the mountains.

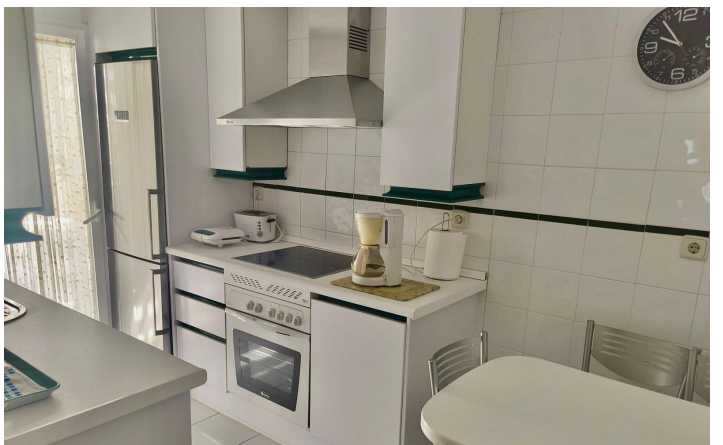
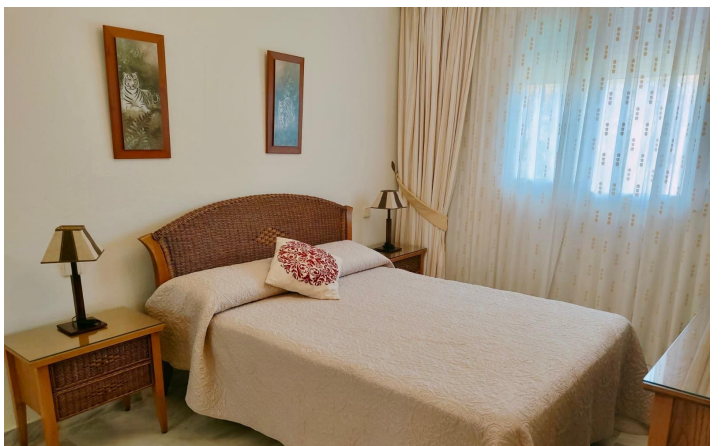
The property is located in the well-known urbanization of La Dama de Noche a short walk from Puerto Banus, with tropical gardens, swimming pools, paddle tennis court, 24 hour security as well as transport, shops and nearby schools.

Excellent property for its location next to Puerto Banus presents a safe purchase value both to live all year round and for rent.

Available for Long term from September to June. Bookings now.

[View Property Online](#)

# GALLERY





---

Vivi Real Estate | Calle Almendralejo de Jarales 5 Mijas Costa, 29640

Tel: +34 672 816 975

Email: [sales@vivi-realestate.com](mailto:sales@vivi-realestate.com) | Web: [www.vivi-realestate.com](http://www.vivi-realestate.com)