



Middle Floor Apartment in Puerto Banús

Price € 635,000

Bedrooms	2
Bathrooms	1
Build Size	70 m ²
Plot Size	70 m ²

SETTING

- ✓ Beachfront
- ✓ Close To Shops
- ✓ Close To Schools
- ✓ Beachside
- ✓ Close To Sea
- ✓ Close To Port
- ✓ Close To Town

ORIENTATION

- ✓ East

CONDITION

- ✓ Excellent

CLIMATE CONTROL

- ✓ Air Conditioning

VIEWS

- ✓ Sea
- ✓ Mountain

FEATURES

- ✓ Near Transport
- ✓ Private Terrace

FURNITURE

- ✓ Fully Furnished

SECURITY

- ✓ Gated Complex

CATEGORY

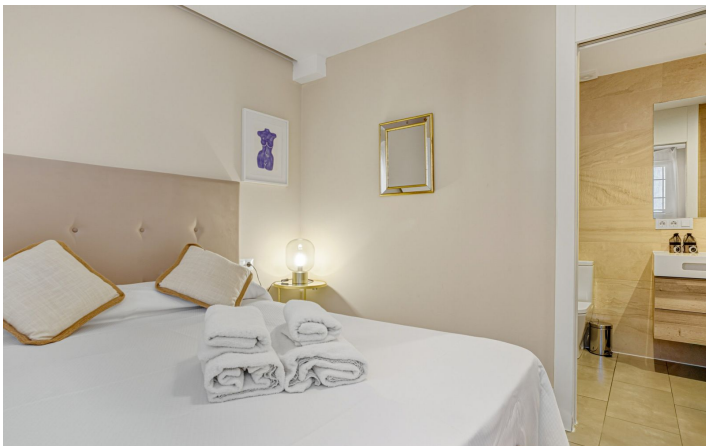
- ✓ Beachfront

Beautiful beachfront apartment with sea and La Concha mountain views, located in a gated community in the heart of Puerto Banús. Just a few steps from the beach, restaurants, shops, and all amenities. This bright and welcoming property offers an unbeatable location and the perfect combination of comfort and lifestyle. The apartment features two bedrooms and one fully equipped bathroom, as well as a modern kitchen and a spacious living-dining area filled with natural light. The interior has been designed for both functionality and comfort, and includes centralized air conditioning, shutters, and a pleasant, airy atmosphere. The gated community provides a secure and peaceful environment, ideal for both permanent residence and holiday stays. Additionally, the property offers the possibility of

short-term rentals, making it an excellent investment opportunity. An exceptional opportunity to acquire a property in one of Marbella's most exclusive areas, combining stunning sea and mountain views with a truly privileged location.

[View Property Online](#)

GALLERY



Vivi Real Estate | Calle Almendralejo de Jarales 5 Mijas Costa, 29640

Tel: +34 672 816 975

Email: sales@vivi-realestate.com | Web: www.vivi-realestate.com