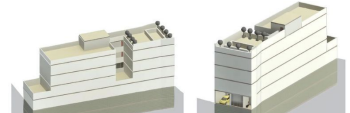
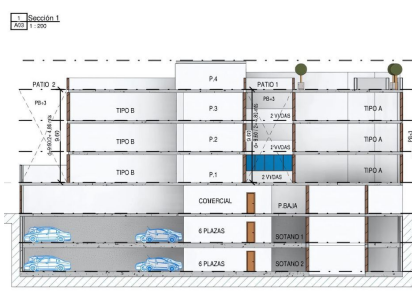


| OPCION A  | PROCESOS      | CLASIFICACION | VALOR  | VALOR UNITARIO | VALOR TOTAL |
|-----------|---------------|---------------|--------|----------------|-------------|
| SOTANO 3  | Asesoramiento | 1             | 222,38 |                | 222,38      |
|           | Plan. Arqu.   | 1             | 2,41   |                | 2,41        |
|           | Excavacion    | 1             | 20,31  |                | 20,31       |
| SOTANO 2  | Asesoramiento | 1             | 125,35 |                | 125,35      |
|           | Plan. Arqu.   | 1             | 2,41   |                | 2,41        |
|           | Excavacion    | 1             | 19,31  |                | 19,31       |
| SOTANO 1  | Asesoramiento | 1             | 222,38 |                | 222,38      |
|           | Plan. Arqu.   | 1             | 2,41   |                | 2,41        |
|           | Excavacion    | 1             | 20,31  |                | 20,31       |
| P. BAJA   | Asesoramiento | 1             | 222,38 |                | 222,38      |
|           | Plan. Arqu.   | 1             | 2,41   |                | 2,41        |
|           | Excavacion    | 1             | 20,31  |                | 20,31       |
| PLANTA 1* | Asesoramiento | 1             | 222,38 |                | 222,38      |
|           | Plan. Arqu.   | 1             | 2,41   |                | 2,41        |
|           | Excavacion    | 1             | 20,31  |                | 20,31       |
| PLANTA 2  | Asesoramiento | 1             | 222,38 |                | 222,38      |
|           | Plan. Arqu.   | 1             | 2,41   |                | 2,41        |
|           | Excavacion    | 1             | 20,31  |                | 20,31       |
| PLANTA 3  | Asesoramiento | 1             | 222,38 |                | 222,38      |
|           | Plan. Arqu.   | 1             | 2,41   |                | 2,41        |
|           | Excavacion    | 1             | 20,31  |                | 20,31       |
| TOTAL     |               |               |        |                | 300,00      |



| OPCION A  | PLAZAS        | PLAZAS TIPO | PLAZAS | IMP | Tarifa Superficie Construida |
|-----------|---------------|-------------|--------|-----|------------------------------|
| SOTANO 3  | Asesoramiento | 6           |        |     | 207,20                       |
|           | Plan. Arqu.   | 6           |        |     | 28,52                        |
|           | Excavacion    | 6           |        |     | 5,40                         |
| SOTANO 2  | Asesoramiento | 6           |        |     | 207,20                       |
|           | Plan. Arqu.   | 6           |        |     | 28,52                        |
|           | Excavacion    | 6           |        |     | 5,40                         |
| SOTANO 1  | Asesoramiento | 6           |        |     | 207,20                       |
|           | Plan. Arqu.   | 6           |        |     | 28,52                        |
|           | Excavacion    | 6           |        |     | 5,40                         |
| P. BAJA   | Asesoramiento | 6           |        |     | 207,20                       |
|           | Plan. Arqu.   | 6           |        |     | 28,52                        |
|           | Excavacion    | 6           |        |     | 5,40                         |
| PLANTA 1* | Asesoramiento | 6           |        |     | 207,20                       |
|           | Plan. Arqu.   | 6           |        |     | 28,52                        |
|           | Excavacion    | 6           |        |     | 5,40                         |
| PLANTA 2  | Asesoramiento | 6           |        |     | 207,20                       |
|           | Plan. Arqu.   | 6           |        |     | 28,52                        |
|           | Excavacion    | 6           |        |     | 5,40                         |
| PLANTA 3  | Asesoramiento | 6           |        |     | 207,20                       |
|           | Plan. Arqu.   | 6           |        |     | 28,52                        |
|           | Excavacion    | 6           |        |     | 5,40                         |
| TOTAL     |               |             |        |     | 300,00                       |

| OPCION A  | PLAZAS        | PLAZAS TIPO | PLAZAS | IMP | Tarifa Superficie Construida |
|-----------|---------------|-------------|--------|-----|------------------------------|
| SOTANO 3  | Asesoramiento | 6           |        |     | 207,20                       |
|           | Plan. Arqu.   | 6           |        |     | 28,52                        |
|           | Excavacion    | 6           |        |     | 5,40                         |
| SOTANO 2  | Asesoramiento | 6           |        |     | 207,20                       |
|           | Plan. Arqu.   | 6           |        |     | 28,52                        |
|           | Excavacion    | 6           |        |     | 5,40                         |
| SOTANO 1  | Asesoramiento | 6           |        |     | 207,20                       |
|           | Plan. Arqu.   | 6           |        |     | 28,52                        |
|           | Excavacion    | 6           |        |     | 5,40                         |
| P. BAJA   | Asesoramiento | 6           |        |     | 207,20                       |
|           | Plan. Arqu.   | 6           |        |     | 28,52                        |
|           | Excavacion    | 6           |        |     | 5,40                         |
| PLANTA 1* | Asesoramiento | 6           |        |     | 207,20                       |
|           | Plan. Arqu.   | 6           |        |     | 28,52                        |
|           | Excavacion    | 6           |        |     | 5,40                         |
| PLANTA 2  | Asesoramiento | 6           |        |     | 207,20                       |
|           | Plan. Arqu.   | 6           |        |     | 28,52                        |
|           | Excavacion    | 6           |        |     | 5,40                         |
| PLANTA 3  | Asesoramiento | 6           |        |     | 207,20                       |
|           | Plan. Arqu.   | 6           |        |     | 28,52                        |
|           | Excavacion    | 6           |        |     | 5,40                         |
| TOTAL     |               |             |        |     | 300,00                       |



# Residential Plot in Torremolinos Centro

Price € 740,000

Build Size

151 m<sup>2</sup>

Plot Size

519 m<sup>2</sup>

## SETTING

- ✓ Town
- ✓ Close To Sea
- ✓ Close To Forest
- ✓ Commercial Area
- ✓ Close To Town
- ✓ Close To Shops
- ✓ Close To Schools

## ORIENTATION

- ✓ South East
- ✓ South West

## UTILITIES

- ✓ Electricity
- ✓ Drinkable Water

## CATEGORY

- ✓ Cheap
- ✓ Investment

Main urban characteristics:

1. Maximum permitted height: ground floor + 4 floors.
2. Estimated development: approximately 1,294.52 m<sup>2</sup> of residential space.
3. Allowed uses: residential construction or tourist apartments with a commercial space on the ground floor.
4. Reinforced area with high income potential for residential or mixed-use projects.
5. High demand in the region, making it ideal for developers and investors.

A detailed technical report analyzing the urban planning feasibility and development potential of the site is available, facilitating decision-making.

Don't miss this unique opportunity to build a building in a privileged location with great growth potential! Contact us for more information and a comprehensive analysis.

[View Property Online](#)

ViVi Real Estate | Calle Almendralejo de Jarales 5 Mijas Costa, 29640

Tel: +34 672 816 975

Email: [sales@vivi-realestate.com](mailto:sales@vivi-realestate.com) | Web: [www.vivi-realestate.com](http://www.vivi-realestate.com)