

# Residential Plot in Sotogrande Alto

Price € 3,500,000

Build Size

1 m<sup>2</sup>

Plot Size

11 m<sup>2</sup>

## SETTING

- ✓ Frontline Golf
- ✓ Close To Shops
- ✓ Close To Schools
- ✓ Close To Golf
- ✓ Close To Sea
- ✓ Close To Marina
- ✓ Close To Port
- ✓ Close To Town
- ✓ Urbanisation

## ORIENTATION

- ✓ South
- ✓ South West

## CONDITION

- ✓ Excellent

## VIEWS

- ✓ Mountain
- ✓ Garden
- ✓ Golf
- ✓ Pool
- ✓ Panoramic
- ✓ Forest

## FURNITURE

- ✓ Optional

## SECURITY

- ✓ Gated Complex
- ✓ 24 Hour Security
- ✓ Safe

## CATEGORY

- ✓ Bargain
- ✓ Investment
- ✓ Resale
- ✓ Golf
- ✓ Luxury
- ✓ With Planning Permission
- ✓ Holiday Homes
- ✓ Off Plan
- ✓ Contemporary

Ultra-prime 4-plot portfolio in Altos de Valderrama | private compound opportunity at €3,500,000 + taxes

This is an exceptional opportunity to control a rare collection of 4 adjoining plots in one of the most discreet, green and protected positions within Altos de Valderrama. With approximately 10,978 m<sup>2</sup> of land across the four plots, the opportunity supports anything from a major private compound to a medium-term wealth strategy based on multiple villas within the same highly private enclave. Unlike more exposed land plays, the real value here lies in scale, silence, cul-de-sac privacy, mature trees and immediate proximity to the Valderrama environment. The portfolio is offered at €3,500,000 + taxes, creating a clear acquisition advantage compared to buying the two plot pairs separately at €4,000,000 + taxes.

### Investor key facts

Approx. combined land area: 10,978 m<sup>2</sup>, derived from the available cadastral documentation.

Portfolio price: €3,500,000 + taxes

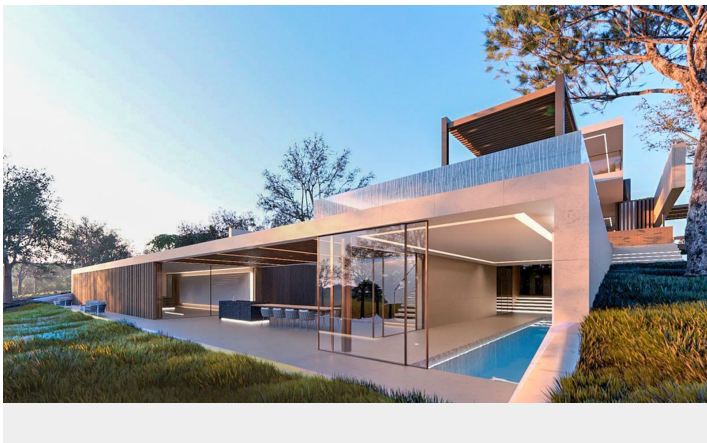
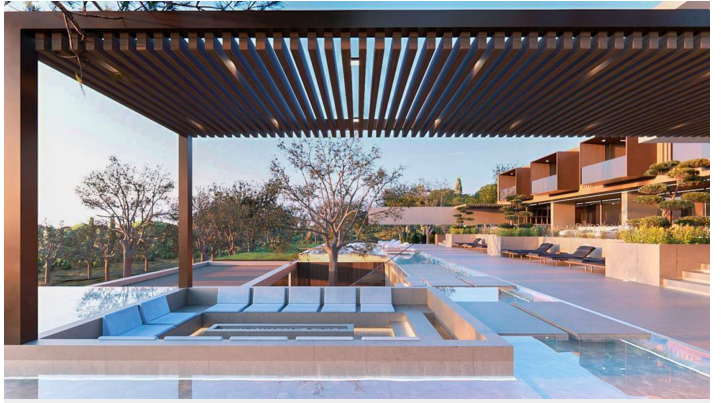
Two-pair acquisition price: €2,000,000 + taxes per pair

Full-portfolio pricing advantage: €500,000

Plots 55+56 also benefit from an existing basic project for a large private villa.

[View Property Online](#)

# GALLERY





Los altos de Valderrama - Sotogrande



- Parcela 53  
2.172 m<sup>2</sup>
- Parcela 56  
2.181 m<sup>2</sup>
- Parcela 55  
3.330 m<sup>2</sup>
- Parcela 54  
3.330 m<sup>2</sup>





---

Vivi Real Estate | Calle Almendralejo de Jarales 5 Mijas Costa, 29640

Tel: +34 672 816 975

Email: [sales@vivi-realestate.com](mailto:sales@vivi-realestate.com) | Web: [www.vivi-realestate.com](http://www.vivi-realestate.com)