



Detached Villa in Benahavís

Price **€ 4,250,000**

Bedrooms	5
Bathrooms	5.5
Build Size	465 m ²
Terrace	183 m ²
Plot Size	1843 m ²

SETTING

- ✓ Frontline Golf
- ✓ Close To Shops
- ✓ Commercial Area
- ✓ Close To Town
- ✓ Close To Golf
- ✓ Urbanisation

ORIENTATION

- ✓ South East

CONDITION

- ✓ Excellent
- ✓ New Construction

POOL

- ✓ Private

CLIMATE CONTROL

- ✓ Air Conditioning
- ✓ U/F Heating
- ✓ Hot A/C
- ✓ U/F/H Bathrooms
- ✓ Fireplace

VIEWS

- ✓ Sea
- ✓ Country
- ✓ Pool
- ✓ Mountain
- ✓ Panoramic
- ✓ Golf
- ✓ Garden

FEATURES

- ✓ Covered Terrace
- ✓ Solarium
- ✓ Ensuite Bathroom
- ✓ Double Glazing
- ✓ Fitted Wardrobes
- ✓ Storage Room
- ✓ Access for people with reduced mobility
- ✓ Fiber Optic
- ✓ Private Terrace
- ✓ Utility Room
- ✓ Barbeque

FURNITURE

- ✓ Optional

KITCHEN

- ✓ Fully Fitted

GARDEN

- ✓ Private
- ✓ Landscaped
- ✓ Easy Maintenance

SECURITY

- ✓ Entry Phone
- ✓ Alarm System

PARKING

- ✓ Covered
- ✓ Open
- ✓ More Than One
- ✓ Private

UTILITIES

- ✓ Electricity
- ✓ Drinkable Water

CATEGORY

- ✓ Golf
- ✓ Luxury
- ✓ Resale
- ✓ Contemporary

EXCLUSIVE VILLA IN NUEVA ATALAYA ESTATE, BENAHVÍS: A LUXORIOUS RETREAT ON THE COSTA DEL SOL

The prestigious gated community of Nueva Atalaya is renowned for its exclusivity and tranquillity. Only minutes away from the golden beaches of the Costa del Sol and the renowned golf courses of the area and Puerto Banús.

On the best street of the urbanisation, you will find this architectural jewel that embodies the essence of Mediterranean luxury. This villa, with its five bedrooms, each with en suite bathroom, and an additional guest bathroom, is a testament to timeless elegance and modern comfort.

PRIVILEGED PANORAMIC VIEWS

Located on the front line of the golf course, this villa offers panoramic views of the Mediterranean Sea and the majestic La Concha Mountain. From sunrise to sunset, every moment here is an opportunity to revel in the natural beauty of the Costa del Sol. The pool is the perfect place to enjoy moments of tranquillity, surrounded by an environment that reflects serenity and sophistication.

CUTTING-EDGE DESIGN AND UNCOMPROMISING COMFORT

The property is distributed over two levels, where every space has been carefully conceived to provide an unparalleled living experience. The kitchen, open to the dining room and the spacious living room, is a space where functionality meets beauty. Natural light floods every corner, highlighting the clean lines and high-quality materials that define this residence.

SPACES FOR WELLNES AND ENTERTAINMENT

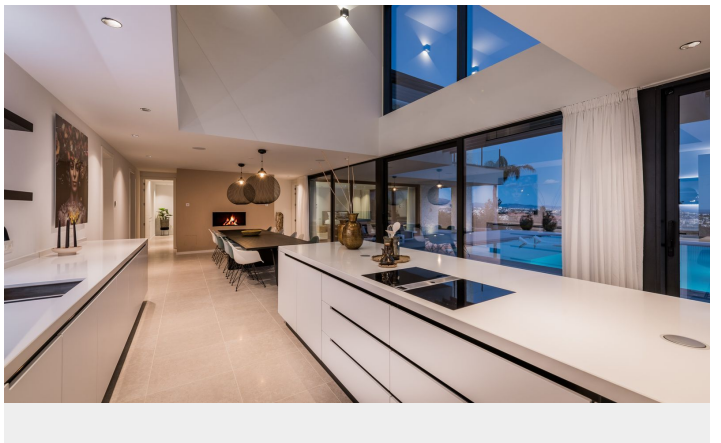
The meticulously manicured garden allows outdoor living to relax and enjoy either dining al fresco or simply gazing at the stars on warm evenings. This villa offers an environment conducive to well-being and connection with nature. The garage with capacity for two cars provides additional comfort.

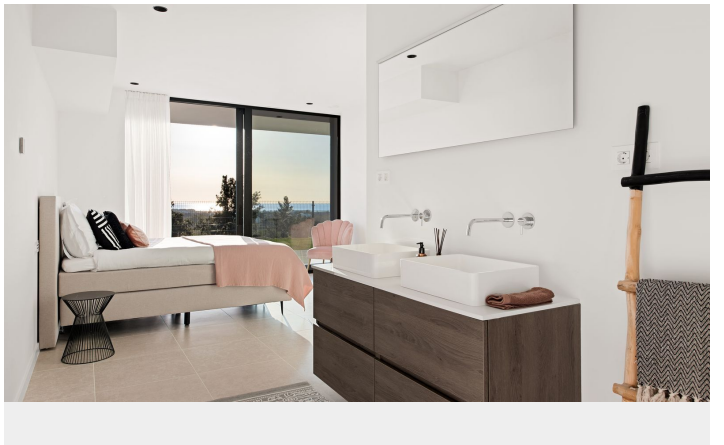
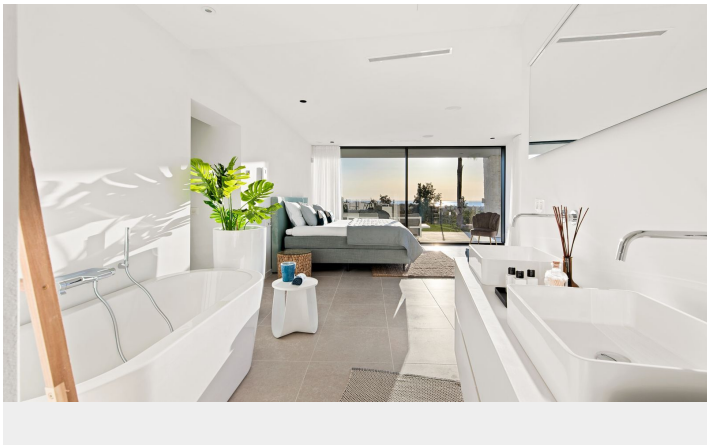
A UNIQUE OPPORTUNITY

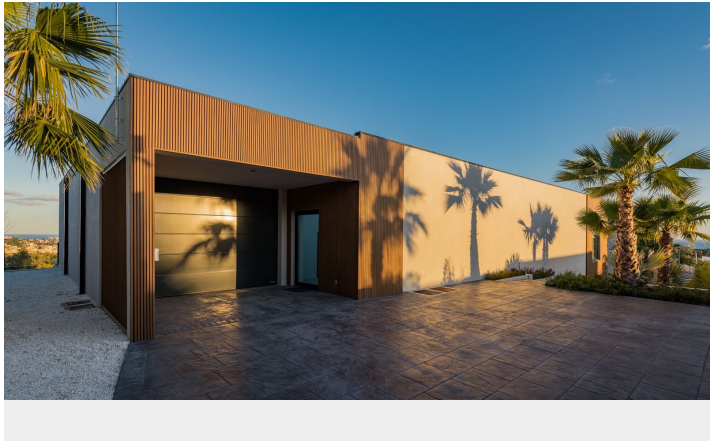
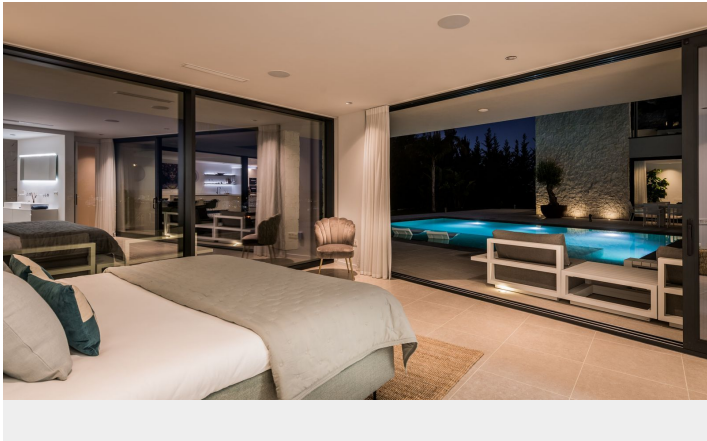
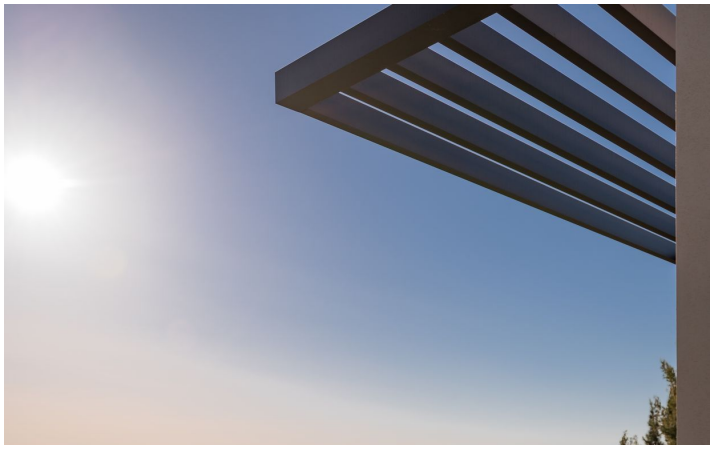
This villa in Nueva Atalaya is an exceptional opportunity for those seeking the highest quality of life on the Costa del Sol. It is an oasis with total privacy, a luxury retreat where dreams come true.

[View Property Online](#)

GALLERY







ViVi Real Estate | Calle Almendralejo de Jarales 5 Mijas Costa, 29640

Tel: +34 672 816 975

Email: sales@vivi-realestate.com | Web: www.vivi-realestate.com