



# Detached Villa in Alhaurín el Grande

Price **€ 895,000**

Bedrooms	<b>4</b>
Bathrooms	<b>3</b>
Build Size	<b>300 m<sup>2</sup></b>
Terrace	<b>300 m<sup>2</sup></b>
Plot Size	<b>1600 m<sup>2</sup></b>

## SETTING

- ✓ Town
- ✓ Close To Forest
- ✓ Mountain Pueblo
- ✓ Urbanisation
- ✓ Close To Shops

## ORIENTATION

- ✓ South

## CATEGORY

- ✓ Bargain
- ✓ Investment
- ✓ Cheap
- ✓ Distressed

Looking for a place to build your dream home with spectacular views or to make a smart investment in a privileged environment?

This plot of 905 m<sup>2</sup> located in the prestigious urbanization Sierra Gorda, in Alhaurín el Grande, is a unique opportunity.

With a buildability of 25%, you can design a detached house with all the amenities and space you need.

Surface: 1.200 m<sup>2</sup>, an ideal size that combines space and manageability.

Buildability: Up to 25%, perfect for building a custom-designed home, with space for gardens, swimming pool, and leisure areas.

Natural environment: Surrounded by mountains and nature, the urbanization enjoys spectacular views and a pleasant climate all year round.

Sierra Gorda is one of the most valued urbanizations in Alhaurín el Grande. It is known for its perfect balance between tranquility and proximity to services.

Just a few minutes from the center of Alhaurín el Grande, you will have access to supermarkets, schools, medical centers and a wide range of leisure activities.

First residence: Many families choose Sierra Gorda to live in because of its family and safe environment. In addition, its strategic location connects you quickly to Malaga,

Marbella and the international airport, ideal for those who need to move for work or enjoy frequent getaways.

Smart investment: This development has shown steady growth in value thanks to demand from both local residents

and foreigners seeking quality of life on the Costa del Sol.

Added benefits:

Quick access: Excellent connections via major roads such as the A-404 and AP-7 motorways.

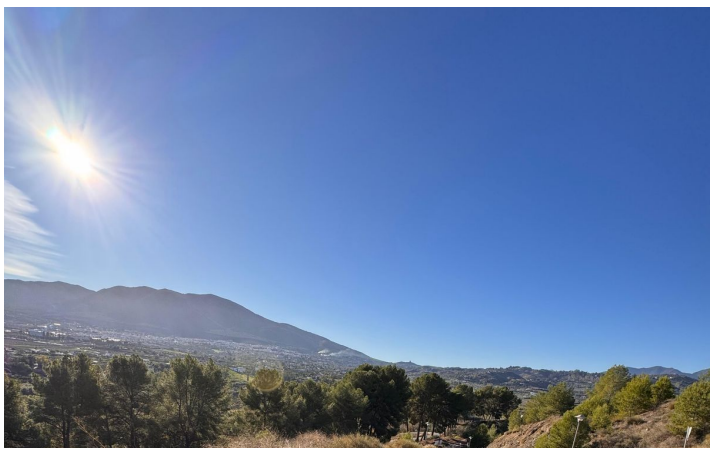
Quality of life: Fresh air, natural landscapes and an environment that invites relaxation.

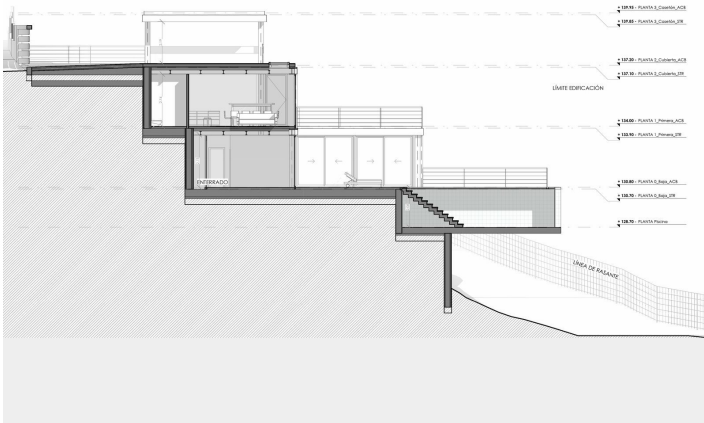
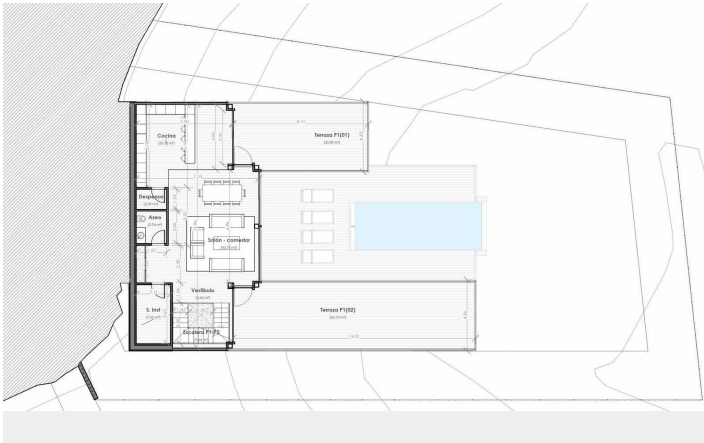
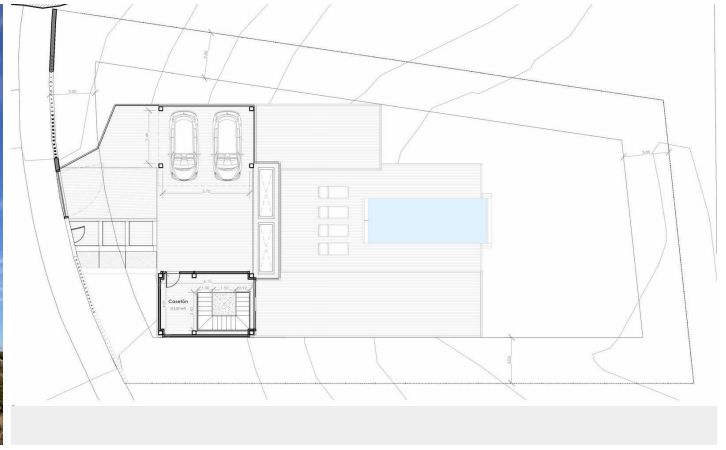
This plot represents a unique combination of prime location, bespoke design possibilities and long-term value. Can you imagine living or investing here?

Contact us for more information, enquire about other available plots and discover why Sierra Gorda is the perfect place for you.

[View Property Online](#)

# GALLERY





### Villa Sierra Gorda: Vanguardia y Naturaleza en el Valle del Guadalhorce

**Parcela de 854 m<sup>2</sup>**  
 Amplio terreno en la prestigiosa urbanización Sierra Gorda con vistas al valle.

**213 m<sup>2</sup> de construcción**  
 Diseño residencial optimizado para la luz exterior y la amplitud espacial.

**Ubicación Privilegiada:**  
 Situada en Albaricité el Grande, corazón del Valle del Guadalhorce.

**Planta de Acceso (Superior)**  
 Plataforma de 62,48 m<sup>2</sup> con garaje para 2 coches y cubiertas de terraza.

**Planta Primera (Zona Social)**  
 Salón, comedor, cocina con despensa y dos terrazas diseñadas para el disfrute colectivo.

**Planta Baja (Zona Privada)**  
 4 habitaciones (2 suites), oficina y acceso directo a la piscina infinita.

**Piscina Infinita "Volada"**  
 Estructura que parece fundirse con el terreno.

**Integración Paisajística**  
 Grandes ventanales y estructuras negras que conectan al interior con la naturaleza.

**Acabados de Alta Gama**  
 Tres baños de mármol, áreas de confort y espacios diáfanos de máxima calidad.

© NotebookLM

Vivi Real Estate | Calle Almendralejo de Jarales 5 Mijas Costa, 29640

Tel: +34 672 816 975

Email: sales@vivi-realestate.com | Web: www.vivi-realestate.com