



WWW.VIVI-REALESTATE.COM
WWW.VIVI-HOMES.COM



SCHAKELWONING 4 KAMER 3 BADKAMERS IN GUADALMINA BAJA

📍 Guadalmina Baja

REF# V4778833 **749.000 €**

SLAAPK.

4

BADK.

3

BEBOUWD

204 m²

PERCEEL

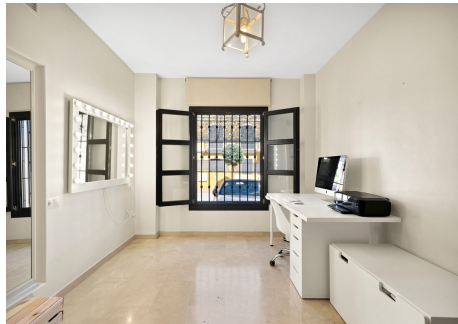
98 m²

PRICE DROP!!! Before 849.000€ NOW 749.000€ Located in an exclusive gated community, this spacious corner townhouse offers a luxury lifestyle in a peaceful and secure environment. With a living area of 204 m² distributed over two floors, this property has four bedrooms and three bathrooms, perfect for families looking for comfort and space. On the ground floor, there is a cosy bedroom with en-suite bathroom, ideal for visitors or those who prefer privacy. The first floor houses two spacious bedrooms, each with their own bathroom, while a third bedroom offers spectacular views, en-suite bathroom and a spacious dressing room, creating an oasis of tranquillity. The outdoor spaces are equally impressive, with terraces and porches totalling 68m², perfect for enjoying the Mediterranean climate and warm summer nights. The 98 m² garden includes a children's area and offers a serene green space to relax and enjoy the outdoors. Residents of this development enjoy a wide range of amenities, including 24-hour security, sports facilities and a stunning communal swimming pool. In addition, the proximity to the Guadalmina golf club provides the opportunity to enjoy an active and healthy lifestyle, practising your favourite sport in a



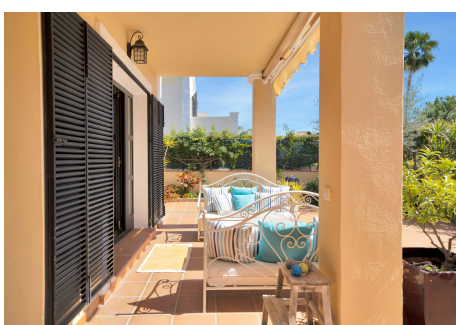
WWW.VIVI-REALESTATE.COM
WWW.VIVI-HOMES.COM

privileged setting. For added convenience, the property comes with two private parking spaces as well as a guest parking area, ensuring more than enough space for residents and their visitors. In short, this corner townhouse offers a perfect combination of elegance, comfort and security in an exclusive enclave, making it the ideal home for those looking to live large in the beautiful region of Guadalmina.ERE





WWW.VIVI-REALESTATE.COM
WWW.VIVI-HOMES.COM





WWW.VIVI-REALESTATE.COM
WWW.VIVI-HOMES.COM

